



Sri

SAI RAM ENGINEERING COLLEGE

Accredited by NBA and NAAC "A+" | An ISO 9001:2015 Certified and MHRD NIRF ranked institution

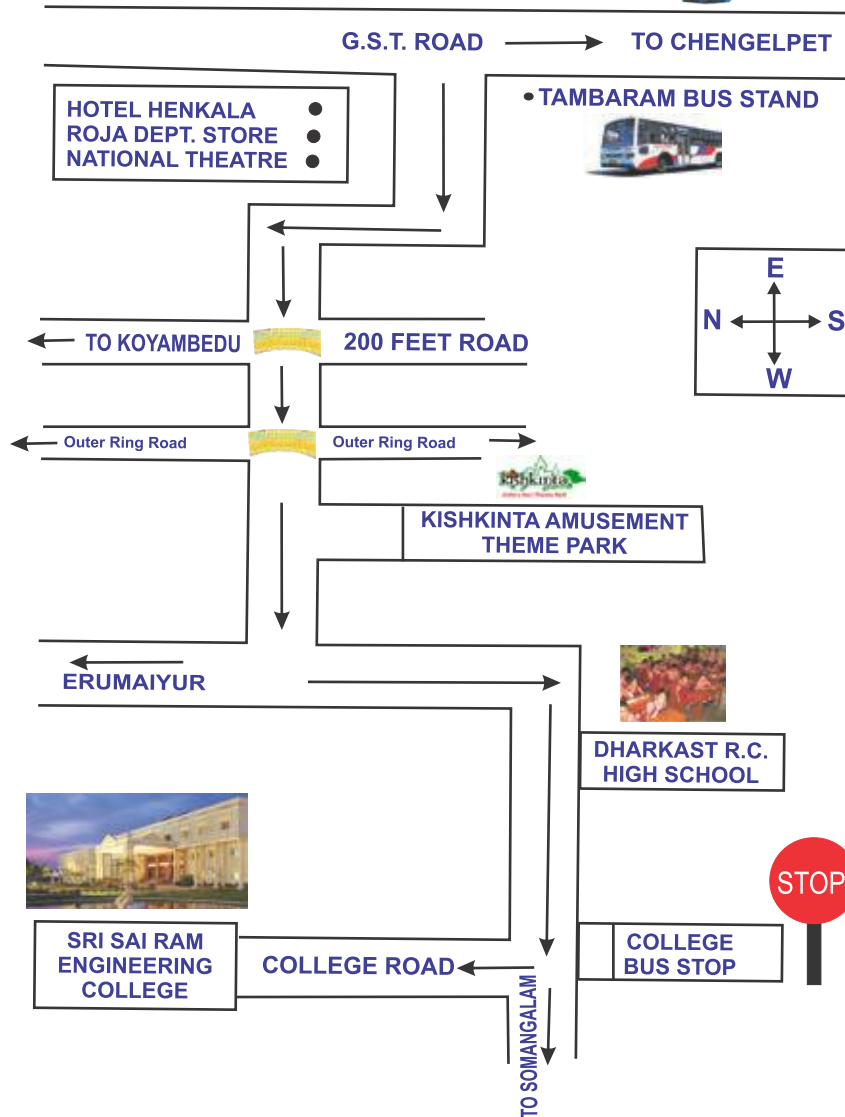
Sai Leo Nagar, West Tambaram, Chennai - 600 044.

Tel : 044 - 2251 2222 www.sairam.edu.in



Academic
Calendar 2019-20

ROUTE MAP OF SRI SAIRAM ENGINEERING COLLEGE CHENNAI - 600 044.





எம்மதமும் சம்மதம் எனும் ஷீரடி சாயிநாதரே !
கருணையோ கண்களில், கல்வியோ கரங்களில்;
எங்கள் பிரார்த்தனைகள் உம் பாதங்களில்...

Shirdi Sai Baba's 11 Assurances



1. Whomsoever puts their feet on Shirdi soil, their sufferings will come to an end.
2. The wretched and miserable will rise to joy and happiness as soon as they climb the steps of My Samadhi.
3. I shall be ever active and vigorous even after leaving this earthly body.
4. My tomb shall bless and speak to the needs of my devotees.
5. I shall be active and vigorous even from my tomb.
6. My mortal remains will speak from My tomb.
7. I am ever living to help and guide all who come to Me, who surrender to Me and who seek refuge in Me.
8. If you look at Me, I look at you.
9. If you cast your burden on Me, I shall surely bear it.
10. If you seek My advice and help, it shall be given to you at once.
11. There shall be no want in the house of My devotee.

Personal Memoranda

Name :

Department :

College ID. No. :

Roll No. :

Year :

University Reg. No. :

Father's / Guardian's Name :

Aadhar No. :

Permanent Address :

Address for Communication :

Mobile No. :

E-mail ID :

Date of Birth :

Age :

Height :

Weight :

Blood Group :

Identification Marks :

Bus Pass No. :

*Education is the manifestation of the
perfection already in man*



M.J.F. Ln. LEO MUTHU

Founder Chairman
Sairam Group of Institutions



Vision

To emerge as a “Centre of excellence” offering Technical Education and Research opportunities of very high standards to students, develop the total personality of the individual and instil high levels of discipline and strive to set global standards, making our students technologically superior and ethically stronger, who in turn shall contribute to the advancement of society and humankind.

Mission

We dedicate and commit ourselves to achieve, sustain and foster unmatched excellence in Technical Education. To this end, we will pursue continuous development of infra-structure and enhance state-of-the-art equipment to provide our students a technologically up-to date and intellectually inspiring environment of learning, research, creativity, innovation and professional activity and inculcate in them ethical and moral values.



Quality Policy

Sri

SAI RAM ENGINEERING COLLEGE

Chennai - 44

We at Sri Sai Ram Engineering College are committed to build a better Nation through Quality Education with team spirit. Our students are enabled to excel in all values of Life and become Good Citizens. We continually improve the System, Infrastructure and Service to satisfy the Students, Parents, Industry and Society.



Best Wishes for a Highly Successful Academic year 2019 - 2020

If boys and girls do not learn discipline in their college days, money and time spent on their education is so much a national loss.

- Mahatma Gandhi

Institutes In Other Dists Call For Old Ranking Method City colleges dominate Anna varsity rank list

Ram Sundaram@timesgroup.com

City colleges dominated the Anna University rank list released for the year 2017-18 on Saturday. Engineering colleges (non-autonomous) in and around Chennai managed to secure the top 30 spots on the performance chart. By producing 146 university rank holders at undergraduate and post-graduate levels, Sri Sairam Engineering College in Tambaram, Chennai topped the list. The college has two gold medalists in mechanical, electrical and electronics, production, instrumentation and electronics engineering top streams.

According to official data, the college, which produces 1,200 engineers every year, has retained the top spot for the last five years. Sri Prakash Leo Mathra, chief executive officer, Sri Ram Group of Institutions, attributed the success to two primary factors — better teacher-student ratio and smaller classrooms in terms of students' strength. The college was one of the very few institutions to not fire teaching faculty en masse when All India Council for Technical Education, government's technical education regulatory body, revised the teacher-student ratio from 1:15 to 1:20. K M Karthik, from Private College Employees Union which opposed AKTE's move, said more than 12,000 teachers lost their jobs this year and this reflected in the year's overall academic performance of students. Of the total 497 affiliated non-autonomous colleges, only 113 managed to record a pass percentage of 50% or above, shows data.

Panimalar Engineering College and St. Joseph's College of Engineering secured the second and third positions in the college-wise performance chart, producing 131 and 130 university rankers.

Commenting on the trend of Chennai colleges sailing over the rank list, Moorthy Selvakumar, an educational consultant from Erode, said toppers in Class XII board exams prefer colleges in Chennai, because of the perception that employability and industry interaction is better in and around the state capital. "In reality, placement trends were worrisome for the past three years because of declassification and GST. With the number of engineering graduates cleared out declining, students in



THE TOP 5

- 1 College Rank
- 2 Univ ranks produced
- 1 Sri Sairam Engineering College **146**
- 2 Panimalar Engineering College **131**
- 3 St. Joseph's College Of Engineering **130**
- 4 Sri Sivasubramaniya Nadar College Of Engineering **112**
- 5 Rajalakshmi Engineering College **85**
- 5 Welammal Engineering College **85**

Chennai colleges might have better chance to get placed or start small industries through government schemes and loans," he added.

The principal of an engineering college in Trichy, requesting anonymity, said, "Answer scripts of students from other districts, particularly from Trichy, mostly go to evaluation centres in and around Chennai. Expectation and evaluation standards of teaching staff at these centres, who work in top Chennai colleges, are much higher. So our students end up scoring low".

Autonomous colleges like PSG College of Technology and Kamarajar College of Technology are not included in the rank list as Anna University doesn't conduct their exams. They prepare content, conduct exams and release results as per University Grants Commission rules.

THOSE THAT MADE THE CUT

- 497 | Non-autonomous affiliated colleges
- Chennai, Kancheepuram & Thanjavur colleges dominate rank list
- 382 | Colleges with a pass percentage of less than 50%
- 69 | Colleges with single-digit pass percentage

Divide & rank us, say colleges

Tejas Niran Nitroon

The recent trend of Chennai colleges dominating the Anna University rank list has brought back the demand for splitting the administration into five regions again.

The Consortium of Self Financing Professional, Arts and Science Colleges claimed that before 2007, the rank list had an equal number of representations from other districts as well. In 2007, the varsity was split into five — Anna University of Technology in Chennai, Coimbatore, Madurai, Trichy, Tirunelveli and Anna University, Chennai. This had a negative impact on the quality of education. Hence, the colleges were brought under a single umbrella in the academic year 2011-12.

P Selvaraj, secretary of the consortium, said in the previous system, more students joined colleges in other districts which performed well and secured a better rank at the regional level. "But the colleges have disappeared from the common rank list. As a result, they get only academically weak students from rural areas. Naturally, their overall performance have also dropped of late," he added.

An Anna University official said there was no proposal to go back to the old ranking system and that the focus right now is to update the syllabus and examination procedure in colleges to that on par with IITs.

36 candidates from State clear civil services exam

State topper secures an All India Rank of 23

SPECIAL CORRESPONDENT
CHENNAI

As many as 36 students from the State have cleared the UPSC civil services examination 2018.

State topper Rishab C.A., of Madurantakam, has secured the All India Rank 23. "I resigned my job in Infosys to start preparation for the civil services. My mentor Shankar used to advise me to read The Hindu during the preparation," said Mr. Rishab. This is his third attempt. He did his graduation from MNM Jain Engineering College.

He received coaching at



Rishab C.A.

Shankar IAS Academy, Manidhaneyam Free IAS Academy, Kingmakers IAS Academy and All India Civil Services Coaching Centre of the State government.

Rangashree T.K., who secured the 50th rank, said she prepared with the guidance of IAS officials such as

R.A. Israel Jebasingh. She studied law from the National Law University, Delhi.

V. Abishek of Chrompet has secured All India Rank 79. He completed his graduation from Sairam Engineering College. Deepana Visweswari V, who secured a rank of 117, did her graduation in Kelakkara.

Another rank holder, Shreeram K., who currently works as a clerk in a government department in Vellore, said he used to visit Chennai to get coaching from Manidhaneyam and Aram IAS Academy every weekend.

STATE UNIVERSITIES / UNIVERSITY DEPARTMENTS / AFFILIATED COLLEGES

Institute	Rating
Bannari Amman Institute of Technology, Erode	AAAA
Coimbatore Institute of Technology, Coimbatore	AAAA
Government College of Technology, Coimbatore	AAAA
Kumaraguru College of Technology, Coimbatore	AAAA
Madras Institute of Technology, Chennai	AAAA
PSG College of Technology, Coimbatore	AAAA
PSG College of Technology, Coimbatore	AAAA
Sri Krishna College of Engineering and Technology, Coimbatore	AAAA
Sri Sai Ram Engineering College, Kancheepuram	AAAA
Sri Sivasubramaniya Nadar College of Engineering, Kalavakkam	AAAA
Thiagarajar College of Engineering, Madurai	AAAA

FOR JEE/NEET 2019 PREPARATION PACKAGE CALL 011-49 380 360

CAREERS360

INDIA'S BEST ENGINEERING COLLEGES 2019

TOP 100 IN RESEARCH

500+ STUDENTS

Events Reported: JEE, Clear All Your Doubts On Engineering, Get The Best Scholarship, Campus Life & IIT Strategies, IIT Bombay, Action Outside Classroom, World's Youngest IIM (IIMU) Under 200k Spent, 4000+ Rank Improvement, Student Speak and More.

Associate Prof. and D. Subrahmanth, Chennai ACE

NATIONAL ANTHEM

Jana-gana-mana-adhinayaka, jaya he
Bharata-bhagya-vidhata.
Punjab-Sindh-Gujarat-Maratha
Dravida-Utkala-Banga
Vindhya-Himachala-Yamuna-Ganga
Uchchala-Jaladhi-taranga.
Tava shubha name jage,
Tava shubha asisa mage,
Gahe tava jaya gatha,
Jana-gana-mangala-dayaka jaya he
Bharata-bhagya-vidhata.
Jaya he, jaya he, jaya he,
Jaya jaya jaya, jaya he!

- Rabindranath Tagore

தமிழ்த்தாய் வாழ்த்து

நீராரும் கடலுடுத்த நிலமடந்தைக் கெழிலொழுகும்
சீராரும் வதனமெனத் திகழ்பரதக் கண்டமிதில்
தெக்கணமும் அதிற்சிறந்த திராவிடநல் திருநாடும்
தக்கசிறு பிறைநுதலும் தரித்தநறுந் திலகமுமே!
அத்திலக வாசனைபோல் அனைத்துலகும் இன்பமுற,
எத்திசையும் புகழ்மணக்க இருந்தபெருந் தமிழணங்கே! தமிழணங்கே!
உன் சீரிளமைத் திறம் வியந்து
செயல் மறந்து வாழ்த்துதுமே! வாழ்த்துதுமே! வாழ்த்துதுமே!

- மனோன்மணியம் பெ. சுந்தரம் பிள்ளை

PLEDGE

India is my Country. All Indians are my brothers and sisters. I love my country and I am proud of its rich and varied heritage. I shall always strive to be worthy of it.

I shall give my parents, teachers and all my elders respect and treat everyone with courtesy.

To my country and my people I pledge my devotion. In their well being and prosperity alone, lies my happiness.

SLOKAM

Om Guru Brahma Guru Vishnu
Guru Devo Maheshwaraha,
Guru Saakshat, Para Brahma
Thasmai Sree Guru Ve Namaha

PLEDGE BY THE TEACHERS

I shall in thought, word and deed ever endeavour to uphold the duty of my profession and I will update and impart knowledge freely and without bias.

I will certainly set an example to my wards in every way.

I will teach and treat all my wards equally. I will be impartial in discharging my duties.

I will not stand as a hindrance to the development of faculties and I will always strive for cordial relations among the students.

I will always co-operate with higher authorities and strive to secure national integration to the best of my ability.



SAPTHAGIRI EDUCATIONAL TRUST

“SAI BHAVAN”, # 31B, Madley Road, T. Nagar, Chennai - 17. Ph : 4226 7777

BOARD OF MANAGEMENT

Founder Chairman

M.J.F. Ln. LEO MUTHU

Chief Executive Officer

Thiru. SAI PRAKASH LEOMUTHU

Vice-Chairman

Tmt. KALAISELVI LEOMUTHU

Secretary

Thiru. A. VEERAIYAN

Treasurer

Tmt. SHARMILA RAJAA

Trust Members

Thiru. B. MOORTHY

Thiru. M. VASU

Thiru. R. SATHISH KUMAR

Thiru. P. BALASUBRAMANIAN

Thiru. K. MUNUSAMY

PREAMBLE

SAPTHAGIRI EDUCATIONAL TRUST is a non-profitable trust established by the Philanthropist, M.J.F. Ln. LEO MUTHU, Managing Director of Leo Group of Companies. Being an ardent Educationalist, with a vision to promote Technical Education in semi-urban areas, he established SRI SAIRAM ENGINEERING COLLEGE, in the year 1995, at Sai Leo Nagar, Dharkast, near Tambaram, a few kilometers away from the well known Kishkinta Amusement Park.

With the motto, “ Prosperity through quality education”, the institution disseminates knowledge and entrepreneurship skills among the students and strives to achieve academic excellence in the fields of technical, computer and management education.

The college is situated amidst sylvan surroundings and everlasting green locality at Sai Leo Nagar, West Tambaram with all essential and suitable infrastructural facilities with regard to Classrooms, Workshops, Drawing Halls, Laboratories, Air-conditioned & Computerised Library, Computer Centres, Internet facilities with RF connectivity at a speed of 2 STM (310 Mbps), CAD/CAM Laboratory, Auditoriums, Audio Visual (A/c) Hall, Seminar Halls, Canteen and Sports complex. The college also has its own perennial water resources to cater to its various needs. Within the campus a PCO, Courier Service, a big Stationery store and the core Banking facility from City Union Bank, Poonthandalam Branch with 24 hours ATM service are there to help the students and the staff. The whole campus is 24 hours wi-fi enabled.



Courses offered

The institution offers the following Four Year Degree Courses at UG level leading to the award of B.E. / B.Tech. degrees from the Anna University, Chennai

1. **Civil Engineering**
2. **Computer Science and Engineering**
3. **Computer Science and Business System**
4. **Electrical and Electronics Engineering**
5. **Electronics and Communication Engineering**
6. **Electronics & Instrumentation Engineering**
7. **Information Technology**
8. **Instrumentation and Control Engineering**
9. **Mechanical Engineering**
10. **Production Engineering**

The institution also offers the following Post-Graduate Degree Courses leading to the award of M.E., and M.B.A., degrees from the Anna University.

1. **Master of Business Administration (M.B.A.)**
2. **M.E - Computer Science & Engineering
- with specialisation in Networking**
3. **M.E. - CAD/CAM**
4. **M.E. - Communication Systems**
5. **M.E - Embedded System Technologies**
6. **M.E. - VLSI Design**
7. **M.E. - Power Electronics & Drives**
8. **M.E. - Computer Science & Engineering**



Features that set us apart

- ★ **Accreditation of all programmes by National Board of Accreditation**
- ★ **NAAC Accreditation with a CGPA of 3.37 & A+ Grade for 5 years.**
- ★ **Ranked in the Top 150 Engineering Institutions of the country in the NIRF ranking released by the MHRD, Government of India.**
- ★ **Recognized Research Centre** for the Department of Mechanical Engineering & the Department of Electronics and Communication Engineering by Anna University.
- ★ ISO Re-certification with excellent remarks.
- ★ Ranked within **Top 10** among all Engineering Colleges in Tamil Nadu ever since Anna University started announcing the rankings.
- ★ Excellent academic performance over the years with **1370 University Ranks** including **37 Gold medals** since inception.
- ★ **MoUs** with highly reputed National and International organizations & industries.
- ★ Consistent placement record of over 95% in reputed firms.
- ★ Good percentage of students pursuing higher studies abroad and attaining global placement.
- ★ Average experience of faculty - 20 Years.
- ★ Conducting **International and National Conferences** regularly.
- ★ Vibrant **Industry-Institute-Interaction Cell.**
- ★ Our students' **Projects** have been recognized at various International Conferences and Workshops held in US, UK, Australia, Netherlands, Germany and many other countries.
- ★ Modern **sports complex & good hostel facilities** within the campus.
- ★ Idyllic campus amidst sylvan surroundings spread over 500 acres.
- ★ Dedicated & Proven Cell for **Personality Development & Effective Counselling.**
- ★ Career development and soft skill **Training Programmes.**
- ★ Well stacked centrally air-conditioned library with National & International Journals.
- ★ Focus on integrating Technology & Management in a cross culture environment.
- ★ The management awards **Scholarship averaging Rs.50 lakh** every year to meritorious students.
- ★ State of the Art Conference Halls and Auditoriums.
- ★ Dedicated and proven cell for Innovation and Entrepreneurship Development.
- ★ Active Entrepreneurship Development Cell
- ★ **Vibrant student clubs** ensuring multiple avenues for the students to exhibit their skills.
- ★ Funded projects worth more than Rs. 3 crores from DST MODROBS and AICTE
- ★ **AICTE - CII Awards to the departments of MECH, CSE, IT and EEE in years 2015, 2017 & 2018.**
- ★ Air Conditioned multi-purpose, World Class **Shri Leo Muthu Indoor Stadium** which measures about 2,00,000 sq.ft. with a seating capacity in excess of 7,000 people.



Recognition & Accreditation

DISTINGUISHED RECOGNITION



all major departments of **Sairam Engineering College** has been accredited by NBA

COVETED ACCREDITATION



Sairam Engineering College has got NAAC Accreditation with a CGPA of 3.37 & **A+ Grade** for 5 years from Nov. 2018

RATED FOR EXCELLENCE



Sairam Engineering College has been ranked one amongst the Top 150 Engineering Institutions of the country ranking list released by the MHRD, Government of India.

STUDENT ASSOCIATIONS

The college provides ample avenues for developing technical skills, updating knowledge, personality development and service to the society through the following Associations and Societies. There is a staff advisor to guide the students in the smooth and effective functioning of the Associations.

1. Association of Electronics and Communication Engineering
2. Association of Mechanical Engineering
3. Association of Electrical and Electronics Engineering
4. Association of Instrumentation and Control Engineering
5. Association of Computer Science and Engineering
6. Association of Information Technology
7. Association of Science and Humanities
8. Association of Management Studies
9. Association of Computer Science and Applications
10. Association of Civil Engineering
11. Association of Electronics & Instrumentation Engineering
12. Association of Production Engineering
13. Computer Society of India - Student Chapter
14. IEEE - Student Chapter
15. ISTE - Student Chapter
16. SAE Collegiate Club
17. IETE
18. ISA
19. ISOI
20. Software Development Centre
21. IIPC
22. I.E.
23. Placement and Training Cell
24. Sports
25. NSS
26. NCC
27. Youth Red Cross
28. Alumni Association
29. Unnat Bharat Abhiyan

ASSOCIATION OF ELECTRONICS & COMMUNICATION ENGINEERING

The association was started in the academic year 1997-98. Guest Lectures on various topics are arranged regularly. A National level technical paper presentation contest, workshop and quiz program are the regular features. “SAI-COM” is conducted every year in August / September. Every academic year, the association arranges for educational tours and industrial visits to develop the industrial knowledge of the students.



ASSOCIATION OF MECHANICAL ENGINEERING



The Mechanical Engineering Association was formed during the academic year 1996-97 and since its inception, periodical meetings, student seminars and guest lectures have been the regular features. Every year, the association conducts atleast one technical seminar every fortnight with special lectures on the topics most relevant to the curriculum for the benefit of the students. The association organises “SAI MECH”, an All India Technical Symposium, every year. The association has ambitious plans to include interaction with industries in a broader way, such as, sponsoring students in special seminars, research and development activities, which will ultimately improve the institution - industry relationship remarkably.

ASSOCIATION OF ELECTRICAL AND ELECTRONICS ENGINEERING

In order to develop professional ethics and to build rapport with experienced engineers, the Department of Electrical and Electronics Engineering has its association. In addition to the regular activities like guest lectures by eminent professionals, arranging technical visits, seminars and symposiums, it has been organising State level and National level paper presentation and seminars on latest electrical and electronics engineering topics, under the banner of “SAI-MAGNICON” every academic year. Industrial tours to provide industrial exposure to students and staff are arranged regularly.



ASSOCIATION OF COMPUTER SCIENCE AND ENGINEERING

The Association is intended to inculcate the technical passion and mould the budding technocrats. “SAI COMPFEST” - a state level technical symposium is conducted, bringing students from other engineering colleges, invoking the technical extravaganza. Frequent guest lectures from various IT oriented companies create awareness among the student population. Visits to large scale industries emboss orientation between the students and industry professionals. Educational tours in and out the state nourishes practical knowledge. The above activities are highly emphasized by this ambitious association in order to make the students update with the state-of-the art technology and to improvise on their technical skill set. The association organizes short term courses which bring the students in contact with the parallel fields of their curriculum like networking, hardware and software concepts.



ASSOCIATION OF INSTRUMENTATION AND CONTROL ENGINEERING



Industrial Automation is gaining increasing importance in all areas of industry to achieve international standards. The advancements and technological innovations in digital communication and computer controlled systems are prime factors in industrial automation. The association of Instrumentation and Control Engineering places strong emphasis on latest trends in industrial automation by the way of regular seminars and workshops by eminent persons from industries and research institutions. “SAI ICON” the National Level Technical Symposium is the regular feature of the department.

ASSOCIATION OF INFORMATION TECHNOLOGY

This association is functioning under the name “SAI TECHCELLENCE”. Every year, a national level technical symposium is conducted and many institutions through out the state are showing overwhelming response. The association conducts other than the national level technical symposium, special seminars and workshops in a big manner regularly.



ASSOCIATION OF ELECTRONICS & INSTRUMENTATION ENGINEERING



In order to build consistent rapport with industries, the Department of E & I has its association and relevant activities. In addition to the regular activities like guest lectures by eminent professionals, arranging technical visits, and seminars are in the regular agenda. It has been organising a National level technical meet every year.

ASSOCIATION OF CIVIL ENGINEERING

The premier branch of Engineering has been organizing a National level technical symposium every year by inviting eminent and experienced resource persons from industries as well as educational institutions to help the student community at large. Guest lectures, seminars and curriculum related competitions are regular features of the association.



ASSOCIATION OF PRODUCTION ENGINEERING



The latest addition to the existing list of associations is the association of production engineering which is conducting guest lectures, workshops and seminars to update the latest trends and changes as per the requirements of the industrial scenario for the better benevolence of the students. It has set already the futuristic goals of producing rank holders and good placement record.

ASSOCIATION OF SCIENCE AND HUMANITIES

This association “SAI HUMSA” primarily fulfils the aspirations and development of the first year engineering students. State level student seminar is arranged every year for better interaction and exchange of ideas among the first year students. Apart from this, the association is active throughout the year with frequent organization of special lectures by eminent personalities and various co-curricular competitions. The enthusiasm and team spirit of the young students in organizing various activities is touching new frontiers every year.



ASSOCIATION OF COMPUTER SCIENCE & APPLICATIONS (ACSA)

The Association of Computer Science & Application (ACSA) organises every year industrial tours for the benefit of the students. The objective of the tour programme is to make an interaction between students and computer industry professionals. Every year a state level Technical Symposium, INFOGEDDON is organised.



ASSOCIATION OF MANAGEMENT STUDIES



The Association of Management Studies comprising mainly of MBA students, periodically conducts seminars, workshops and guest lectures. It also arranges special lecture programmes, educational and industrial visits, paper presentations and other managerial endeavours. It aims at imparting practical skills through frequent interaction with practising managers and entrepreneurial development programmes. MANFEST, the National Level Meet is conducted for the managerial students every year successfully.

COMPUTER SOCIETY OF INDIA (CSI)



CSI forms a link between the computer related departments of our college and outside industry. Recent developments in IT fields are updated through regular seminars. Course orientation programs for the staff are conducted through this chapter. It has about 1000 students who study computer related courses and are provided with maximum opportunities and channelized to their fields of interest.

INSTITUTE OF ELECTRICAL & ELECTRONICS ENGINEERS (IEEE)

It is the oldest and the largest technical society in the world, having its head quarters in United States of America. A student branch of IEEE functions in our college with students from EEE, ECE & ICE Departments as members. This chapter conducts periodical technical seminars and conferences with the interaction of eminent personalities from leading industries & institutions. The student



members are also taken for industrial visits to make them understand the latest trends in their technical fields. It provides them with the best technical magazines, proceedings, transactions, journals etc., published by IEEE, USA. It enables the student members to take part in seminars & conferences conducted by IEEE Student branches of other reputed institutions and to interact with other IEEE members all over the world.



INDIAN SOCIETY FOR TECHNICAL EDUCATION (ISTE)

ISTE plays a great role in enhancing the status of Engineering teachers and students and fulfilling their professional needs. It is ably supported by the Ministry of HRD, AICTE, State Governments and many International agencies in organizing a variety of programmes to develop the competency of Engineering teachers. Our college student chapter has over 1000 members and regularly conducts special lectures, workshops and seminars.

SAE - CLUB

This Club was established in the academic year 2000 - 2001. Our SAE Club is one of the largest of all the SAE Clubs in the Southern India Section and in the entire country. Other than responding to the prestigious activities of the SAE, our club conducts significant events every year.



INSTITUTE OF ELECTRONICS & TELECOMMUNICATION ENGINEERS (IETE)

IETE, established in 1953 is India's leading recognised technical professional society. It has over 45,000 members spread all over India and in few countries abroad. It provides leadership in a number of scientific and technical areas of direct importance to national development and economy. The basic objective of our IETE chapter is to facilitate the exchange of information and ideas on the advancements in Electronics & Communication Engineering through special lectures, seminars and workshops.

INSTRUMENTATION SYSTEMS & AUTOMATION SOCIETY

The ISA chapter of the institution is regularly conducting guest lectures by eminent people from educational institutions and industries and technical competitions through the prestigious MIT, Chennai. The student members are given opportunities to participate in seminars and workshops and also to arrange technical competitions.



e
C
a



INSTRUMENT SOCIETY OF INDIA

The Society of Instrumentation professionals was established in the year 1970, with head quarters at Indian Institute of Science, Bangalore. It strives to act as a link between academic institutions and the instrumentation industry, by organising several programs. It aims to provide a forum for pooling the knowledge and experience of individuals, participants from scientific institutions and industrial organizations interested in promoting development of instruments and instrumentation systems. It acts as an exchange bureau for dissemination of technical information through periodic and special publications, appraising the technical and scientific personnel in the industries and research institutions, exchange of knowledge in the field of instrumentation by the industries, educational and scientific institutions mutually.

SOFTWARE DEVELOPMENT CENTRE

In order to help the students to acquire leading edge programming practices in the emerging areas of computing field, a modern software development centre other than curriculum based computer laboratories is functioning. It is also engaged in consultancy projects.

TED^xSairam
x = independently organized TED event

TEDxSairam was created in the spirit of TED's mission, "ideas worth spreading." TEDxSairam believes passionately in the power of ideas to change attitudes, lives, innovations and ultimately, the world. Our agenda is to make great ideas accessible and spark conversation. TEDxSairam is successfully heading for the 8th edition.

SPORTS ACTIVITIES

Sports activities are conducted throughout the year to keep the students not only physically but also mentally active. Sai-Leo Trophy - Volley ball tournament, Sai Ram Trophy - Cricket Tournament, Leo Trophy - Throw ball tournament and South India Level Chess tournament are the regular features of our sports activities. Ample facilities for both indoor and outdoor sports activities are available in the campus. Founder's Trophy, an open tournament in cricket at National level is an annual event in the packed sports activities.

NATIONAL SERVICE SCHEME (NSS)

The primary objective of the NSS is to inculcate personality and leadership qualities among the students through community service. The NSS unit started functioning in our college in the year 1998 and is involved actively in various programmes. Organizing eye camp, dental camp and blood donation camps, tree planting, helping tribal children, first-aid courses, etc., are some of the outstanding and regular programs of the NSS unit. Besides, special camps at selected villages, distribution of sewing machines and tricycles for physically challenged are also some of the regular services done by our units. Our NSS has been receiving accolades and certification for exemplary services every year.



NATIONAL CADET CORPS (NCC)

To develop the qualities of character, courage, discipline, leadership, spirit of adventure and sportmanship among the youth, there is an NCC Senior Division - (TN) Air Sqn (Tech.). Cadets are given severe training in Foot Drill, Weapon Training and Air Craft Technology. Our students are encouraged and motivated to take up a career in Armed forces by getting a suitable environment.

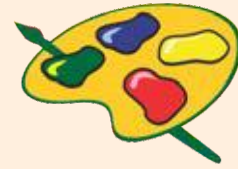
YOUTH RED CROSS

An active unit of Youth Red Cross is functioning in the institution. The volunteers are regularly participating in social awareness programmes and competitions conducted by various YRC Units and Anna University apart from our own regular programmes. Red Ribbon Club of our institution functions actively by arranging social awareness programmes and special lectures.



FINE ARTS CLUB

Our students enthusiastically arrange and participate in various cultural and fine arts competitions. Our students regularly bag various trophies, medals and prizes in several competitions. We have gifted Baratha Natyam and Classical Dancers, Eastern and Western vocalists. Many students are proficient in playing several instruments such as Veena, Tabla, Miruthangam and Drums. Our students evince great interest in painting, photography, pencil sketching and so on. Sai Sruthi is our musical troupe.



ENVIRONMENTAL CLUB

There is an active environmental club which has a large number of enthusiastic members. Activities are undertaken not only to keep a clean and green environment around us, but also many seminars / workshops are organised for safeguarding the mother nature.

ALUMNI ASSOCIATION

Alumni Meet is arranged every year after annual Convocation. Indeed it is another big celebration. Our Alumni feel proud to be a part of Sri Sai Ram family. Apart from exchanging pleasantries with their teachers and classmates, they provide information regarding their placement and latest trends in their chosen field. Placement opportunities are conveyed to our alumni through their email I.D. Some of our Alumni pursuing higher education in USA, UK, Australia and other Countries, present seminars to our students and inspire them.



TRAINING & PLACEMENT CELL

Training and Placement Cell is an integral part of our institution. The institute has provided complete infrastructure for the effective functioning of the cell. The cell is sensitized to function all through the year towards generating placement and training opportunities for the students. Training activities are organized throughout the year as an effort towards preparing the prospective students for the campus selection programmes.

Reputed industrial houses across the country visit our institute regularly for the campus recruitment programmes. Our pioneering efforts have borne fruits in achieving academic-industrial rapport and we are proud that our students are absorbed by leading giants in the industrial firmament. The placement cell coordinates quite well with the corporate sector and provides well-developed infrastructure to facilitate the campus selection programmes.

The cell is designed to function with a high degree of professionalism. It provides almost instantaneous data to the corporate sector with regard to the candidates available for consideration towards placement in accordance with the preserved requirements. Indeed, we have been appreciated more often by the industrial houses for this special features embedded in our work philosophy.

To coordinate the placement activities, the college has a separate placement cell. The placement cell manages its activities collectively by the students and all the heads of the department. The placement coordinators of all the departments involve themselves in all the activities conducted by the Placement cell for updation. The Placement cell has adopted an effective communication system to keep the students informed about potential job opportunities and guide them from time to time.

NOTABLE FEATURES

1. More than 90% placement in the last twelve years
2. Placing hugely in reputed software industry
3. Higher studies in India and abroad
4. Enhanced avenues and opportunities
5. Accredited by TCS

INNOVATION AND ENTREPRENEURSHIP DEVELOPMENT CENTRE (IEDC)

The Innovation and Entrepreneurship Development Centre (IEDC) is a unique centre functioning in the Institute to promote and encourage young and budding entrepreneurial aspirants to showcase their innovative talents in the form of student projects. The outcome of these projects is aimed to bring new products to the market or to develop new methodologies so as to generate/ manufacture existing products in a more cost effective and environment friendly way. The centre is sponsored by the Department of Science and Technology, Government of India, wherein every year, five best student projects are selected and awarded Rs. 1 lakh for bringing out the project in the form of a new product. The objective of establishing an IEDC is to set up an institutional mechanism to create self employment opportunities and to convert "job-seekers" into "job-generators". Apart from the above, various training programmes like Entrepreneurship Awareness Programmes (EACs), Entrepreneurship Development Programmes (EDPs) and Faculty Development Programmes (FDPs) are also conducted under the flagship of Entrepreneurship Development Institute of India to foster the entrepreneurial culture among the faculty and students.



ENTREPRENEUR DEVELOPMENT CELL (ED CELL)

ED cell is regularly conducting entrepreneurial awareness and development programmes for all Engineering, Management and Computer Application Students. Stalwarts from industries are invited to motivate and guide students to develop the entrepreneurial skills.

HIGHER EDUCATION CELL

The aspirants for higher education especially in reputed foreign universities are extensively helped and guided by the cell. The following activities are done for the benefits of the students :

- Consulates are invited to address the students particularly for informing VISA details.
- Educational Consultants from USA, UK, Australia and other countries are making frequent visits to the institution and they are helping the cell in inviting professors of foreign universities to address the aspirants. Aspirants are provided with opportunities to get direct information from them regarding admission, scholarships and stay.
- Aspirants for UPSC examinations are given guidance and motivational talks by experts in relevant arenas.
- Career guidance to get employment in Army and Air Force is given to interested students.

This cell has elaborate plans to identify furthermore opportunities for students.

CENTRE FOR SOFT-SKILLS AND LATEST TRENDS IN INTERNATIONAL INDUSTRIAL ARENA

Guest Lectures, seminars and workshops are the regular activities. The centre functions with the collaboration of Dalian Mission Tool Group Corporation, Dalian, China. This industry - educational partnership will help the students in a big way in the coming years in directing them to new international industrial avenues.

CENTRE FOR INDUSTRY-INSTITUTE PARTNERSHIP

CUNCTUS

Industry Institute Partnership forms an important activity for any academic institute as its stakeholders interact with the real world. Firstly, the students are benefited due to exposure to current industry practices, updation is possible as and when changes occur in technology, teaching faculty get sensitized to the latest practices leading them to blend practice with usual theoretical teaching methods.

On successful interaction, Industry may realize that Academia has more to offer by way of solving their short term and long term technical problems, provide a manpower resource pool with good industry orientation and a source for updating the knowledge sets of its personnel.

Industries and Technical Institution should have a strong mutuality of interest which can only form the basis of a partnership between them. To bridge the gap between the Institution and Industries, our College is running an Industry Institute Partnership (IIP) Cell.

Centre for Industry-Institute Partnership and Centre for Research & Planning were inaugurated by Mr. K.Jayaramakrishnan, VP – TCS & Mr. T. M. Sathyanarayana , Director- Academic – CTS respectively. The ceremony was presided by Mr. Pratipta Mahopatra, CEO RPG. Mr. A.K. Pattabiraman, Principal Consultant TCS delivered the key note address and released the first issue of CAMPUS PATRIKA. The programme was blessed by Mr. Rakesh Gupta, Dy. GM – HR Ashok Leyland, Mr. K. N.Visweswaran –Hexaware Technologies, Mr. Asokan Pitchai – Head, MAFOI Academy.

IIP CELL aims at effective, frequent and mutually beneficial interactions with Industry and establishing and exploring links with industries for the development of the Institute.

IIP Cell Activities

- * Developing close links between Industry-Institute by interaction programmes.
- * To encourage industry and organizations for placement and training of students in Industries.
- * Widening & Implementing R&D programmes, sponsored and joint R&D projects from industries, in the Institute.
- * To conduct Industrial training and Industrial visits for the students and faculty.
- * To conduct industrial exhibitions to highlight research facilities and expertise available with the Institute.

- * To encourage Industry to collaborate in Industry Study Tour Programme (ISTP) / Internship Programme.
- * Organizing seminars, symposiums, exhibitions and workshops.
- * Publishing and issuing technical bulletins/news letters and course materials with latest technological developments.
- * Collaborating with other societies (National and International) having similar objectives.
- * Conducting Industrial and Technical Exhibitions.
- * Organizing guest lectures on latest technological advancements, evaluation of project.

STUDENT CLUBS

TECHNICAL CLUBS

- Code Club
- Robotics Club
- Cyber Club
- M-apps Club
- Automobile Club
- Energy Efficiency Club
- Math Club
- Science Club

SERVICE CLUBS

- ECO and Swachh Bharat Club
- Rotaract Club/Lions Club
- Yuva Club/Young Indian
- Health & Yoga Club
- Disaster Management & Safety Club

SKILL BUILDING CLUBS

- English Language & Literature Club
- Foreign Language Club
- Skill development Club

HOBBIES CLUBS

- Tamil Ilakiya Mandram
- Fine arts Club
- Photography Club
- Culinary Club

GEMS OF SAI RAM UNIVERSITY RANK HOLDERS

Sl.No.	Name of the Student	Dept.	Rank
2000 BATCH			
1.	A. YEZHILARASU	MECH	5
2.	CH. V. KALYAN	ECE	6
3.	R. RENUKUMAR	MECH	7
4.	K. RANJANI	ECE	20
2001 BATCH			
5.	T. MAGESH	EEE	2
6.	C. SRIGANESH	EEE	6
7.	A. NISHIKANTHA SINGH	MCA	6
2002 BATCH			
8.	V. MOHAN KUMAR	MBA	3
9.	S. KARTHIK	MECH	5
10.	R. DURGAPRASAD	MECH	9
11.	D. ISAC PAUL SARGUNARAJ	EEE	9
12.	G. ANUSUYA	ECE	9
13.	T.S.K. PRABHU	ECE	14
14.	R. JANAKIRAMAN	MCA	14
15.	S. HARINI	EEE	16
16.	S. KARTHICK	MECH	20
2003 BATCH			
17.	V.N. YASESVENI	ICE	GOLD MEDAL
18.	K. BALAJI	ICE	3
19.	P. KEERTHI	ICE	3
20.	P. PAVITHRA	M.SC.-IT	4
21.	R. SRIVATSAN	EEE	6

22.	INTI. RAJINI	M.SC.-IT	8
23.	J. ARVIND	MECH	12
24.	V. KOUSALYA	MBA	12
25.	N. SARULATHA	MBA	12
26.	R. SUMATHI	ICE	13
27.	A. BHUVANESHWARI	CSE	14
28.	K. SANGEETHA	MBA	17
29.	P.S.P. KALAIARASI	MBA	19
30.	V. MUKUNDAN	ICE	19

2004 BATCH

31.	R. SRIMATHY	M.SC.-IT	GOLD MEDAL
32.	M. SRIVIDHYA	M.SC. – IT	3
33.	M.G. DIVYA	ECE	4
34.	V. YAMINI	ICE	6
35.	PVS. KAPIL	M.SC. – IT	8
36.	A. ANUSHA	MBA	11
37.	R. SRIMATHY	MBA	12
38.	K. LAVANYA	EEE	14
39.	P. K. VINODHINI	ICE	17
40.	K. GITANJALI	CSE	19

2005 BATCH

41.	B. GAYATHRI	B.TECH.-IT	GOLD MEDAL
42.	KOTHA SUSHMA	MBA	GOLD MEDAL
43.	A. DEEPA	CSE	2
44.	S. SUBHA	ICE	2
45.	A. RUBY	MBA	5
46.	R. ANURADHA	ICE	7
47.	N. ANURANJANI	ECE	12
48.	J. DHANALAKSHMI	MBA	13

49.	C. SOWMYA	ICE	14
50.	S. RAJAMATHANGI	MBA	15
51.	C. RAJITHA	B.TECH.-IT	16
52.	R. CHITRA	CSE	19

2006 BATCH

53.	S. KRITHIKA	EEE	3
54.	V. SRISUDHA	ICE	3
55.	P. PRADEEPA	B.TECH. – IT	3
56.	S. AISWARYA KAMATCHI	MBA	10
57.	S. KALYANI	B.TECH. – IT	10
58.	S. VIMALA GAYATHRI	ICE	11
59.	A.C. VIGNESH	ICE	12
60.	L. PRIYADARSHINI	EEE	15
61.	P. DHILIPKUMAR	B.TECH.-IT	19
62.	J. DINESH	CSE	19
63.	DEBORAH SHALINI PREMRAJ	ECE	20
64.	R. RAVICHANDRAN	MBA	23
65.	B. AISHWARYA	ECE	29
66.	C. SAIGEETHA	MBA	32
67.	P. VARALAKSHMI	MBA	33
68.	K. GEETHIKA	B.TECH. – IT	36
69.	R. BALAJI	MECH	38
70.	S. SWAMINATHAN	ECE	39
71.	R. VASUDEVAN	MECH	44
72.	I. SUJITHRA	MBA	45
73.	VIJAYALAKSHMI	CSE	47

2007 BATCH

74.	K. SONIYA	MBA	3RD
75.	T. KASTURI	MBA	7TH
76.	G. RAMYA	CSE	18TH
77.	P. KARTHIKEYAN	MBA	18TH
78.	C. NIJIL	EEE	25TH
79.	S. ANTONY JULIA MARY	MBA	30TH
80.	S. DHARINI	MBA	31ST
81.	S. SUBHA JULIET	MBA	35TH
82.	R. MANOJ KUMAR	EEE	36TH
83.	G.R. DEEPIKAA	MBA	37TH
84.	G. VINOCHANDRIKA	CSE	39TH
85.	R. JEEVITHA	MBA	41ST
86.	B. BHARATHI DAS	MBA	43RD
87.	R. RAMYA	EEE	47TH
88.	K. GAYATHRI	EEE	49TH
89.	V. SOWMYA	IT	49TH
90.	K. REVATHY	CSE	50TH

2008 BATCH

91.	V. NEERAJA	CSE	GOLD MEDAL
92.	S. SIVAPRIYA	EEE	3
93.	HARINI CHANDAR	ICE	4
94.	M. VASANTHI	ECE	6
95.	U. KIRUTHIKA	ICE	6
96.	S. SURESH	MECH	6
97.	SHANTHI VASUDEVAN	ICE	7
98.	S. JAYALAKSHMI	ICE	9
99.	V. GANESH KUMAR	ECE	11
100.	B. SIVASANKARI	CSE	18
101.	V. SUGANYA	B.TECH-IT	19

102.	S. JEGAN	MECH	20
103.	R. ROSALINE REKHA	B.TECH-IT	21
104.	N.B. VIJAYASREE	MBA	25
105.	R. INDHUMATHI	MBA	28
106.	S. SWETHA	CSE	31
107.	K. AISHWARYA	MCA	34
108.	P. BABY AMBICA	CSE	40
109.	B.S. CHARANYA	EEE	42
110.	S. K. PREETHIKA	CSE	47

2009 BATCH

111.	A. SARANYA	IT	GOLD MEDAL
112.	V. KANCHANA DEVI	M.E.	GOLD MEDAL
113.	M. VAIJAYANTHI	ICE	2
114.	G. SARANYA DEVI	IT	4
115.	B. SUPRAJA	ICE	5
116.	DIVYA	MBA	6
117.	M. GAYATHRI	MBA	7
118.	M. KAMAKSHI	ICE	9
119.	S. VINODHINI	MBA	9
120.	R. NATARAJAN	IT	10
121.	R. PAVITHRA DEVI	ICE	11
122.	N. JAYASHREE	MBA	12
123.	G.A.HARINIE	EEE	15
124.	A. NITHYA	ECE	19
125.	S. CHITRA	IT	20
126.	C. RAMYA	MBA	20
127.	K. VIDHYALAKSHMI	ECE	21
128.	S. PRABAKARAN	MECH	22
129.	N. AMUDHA	MBA	23

130.	S. RANJANA	ECE	25
131.	J. VIDHYALAKSHMI	IT	26
132.	B. VASUGU RANI	CSE	26
133.	UTHRA NARASIMHAN	ECE	28
134.	R. ROHINI	CSE	29
135.	M. SOWMYA	MCA	32
136.	C. SRIRAM	MECH	37
137.	S. SARANYA	MBA	47
138.	NEERAJA SRIDHARAN	EEE	50

2010 BATCH

139.	S. SANKARALAKSHMI	ICE	GOLD MEDAL
140.	G. RAGHAVAN	MECH.	GOLD MEDAL
141.	H. RAJKUMAR	MBA	GOLD MEDAL
142.	S. PREMALATHA	M.E.	GOLD MEDAL
143.	C. A. SRINIVASA RAGHAVAN	ICE	2
144.	S. JAYALAKSHMI	MBA	4
145.	P. VAISHNAVI	ICE	5
146.	G. DHANALAKSHMI	MBA	7
147.	G. SWATHI	IT	9
148.	J. RADHA	MECH.	9
149.	G. BHAVANI DEVI	MBA	9
150.	K. KARTHIKA	MCA	9
151.	S. AISHWARYA	ICE	10
152.	B. SARANYA	ICE	11
153.	G. BHUVANESWARI	MBA	12
154.	M. SOWMIYA	MBA	13
155.	R. KAILASAM	ICE	14
156.	V. VIGNESH	EEE	16
157.	S. RAM SHANKAR	ECE	18

158.	J. T. GRACE VANILLA	IT	20
159.	R. BHAVANA GUPTA	EEE	21
160.	S. BHUVANESWARI	EEE	24
161.	K. JAYA SURIYAA	MBA	24
162.	S. GOWTHAM	EEE	25
163.	V. SHARANYA	MBA	25
164.	J. PONMOZHI	IT	26
165.	R. SUDHA	MCA	26
166.	R. RAMYA	ECE	27
167.	P. RAKESH KUMAR	MBA	28
168.	J. INDUJA	ECE	29
169.	C. KARTHIKEYAN	MECH.	32
170.	C. JAYASHREE	CSE	34
171.	R. SUBADHRA	MBA	34
172.	A. LOGESHWARI	IT	36
173.	G. KARTHIKEYAN	MBA	37
174.	C. NISHA LAKSHMI	MBA	38
175.	S. V. KARUNYA	CSE	40
176.	S. MALARKODI	CSE	43
177.	R. S. AMSHAPRIYA	IT	46
178.	V. AGALYA	ECE	46
179.	R. RANJI PRASAD	MBA	49
180.	MUKUND CHANDRASEKARAN	MECH.	50
181.	T. A. RANJIT KUMAR	MECH.	50
2011 BATCH			
182	ARAVIND S	ECE	GOLD MEDAL
183	NISHA DEVI T	M.E.(CC).	GOLD MEDAL
184	LAKSHMI PRIYA S	M.E. (CS)	GOLD MEDAL
185	SATHYAN M	ICE	2

186	SARANYA M	M.E.(CC)	2
187	RAJESH G	M.E. (CAD/CAM)	2
188	VISWANATH N	ICE	3
189	VIJAY D	MECH	3
190	VINODHINI R	ICE	4
191	KARTHICK R	M.E. (CS)	6
192	VISHAL R	EEE	8
193	VAISHNAVI J	MBA	10
194	SUKESH S	EEE	12
195	PUSHPALATHA S	MCA	14
196	RAJALAKSHMI G	MBA	14
197	VIJAY M	MBA	16
198	KARTHICK G	B.TECH – IT	17
199	SENTHAMARAI R	CIVIL	18
200	SAI PRATYUSH K	MBA	20
201	SREEMATHI S	MBA	24
202	PRAVEEN S	E&I	25
203	SABITHA B	MBA	25
204	GURU SANKAR A	MECH	26
205	AARTHISHRI D J	CSE	27
206	POORNIMA B	CIVIL	27
207	VIDYA SHANKAR K V	MECH	28
208	ANAND T K	CSE	29
209	PRADEEP KARTHIK B	EEE	29
210	MOHANAPRIYA D	EEE	30
211	PRIYANKA D	CIVIL	32
212	SUBHA J	MBA	32
213	YAMINI K	CSE	33
214	JENIFERPIRIYA RUTH R	MBA	33
215	RADHIGA J	MCA	34
216	SRINATH V	B.TECH – IT	35
217	JAYASHREE R	MBA	35

218	BALAJI R	CSE	37
219	KAUSALYA R	B.TECH – IT	37
220	SAVEESNA PRICELLA B	CIVIL	38
221	GAVASGAR J	MBA	38
222	AYSWARIYA LAKSHMI G	B.TECH – IT	40
223	AISHWARYA T K M	ECE	41
224	AISHWARYA V	ECE	42
225	DHAMOTHARAN R	MBA	42
226	DHANYA B NAIR	MBA	42
227	NANDAKUMAR S	MBA	42
228	PAVITHRA M	MBA	42
229	VIDYASARASWATHY K	MBA	42
230	VIGNESHWARA RAJ A G	MBA	42
231	MOHAMED SHAMEER J	MBA	43
232	MENAKA B	EEE	44
233	SOBHITHAA S	MBA	44
234	SUVITHA R	EEE	45
235	MOULI GANESH T	MECH	45
236	SARANYA DEVI C	MCA	45
237	SUGANYA T	B.TECH – IT	47
238	DEEPIKA S	MBA	47
239	PALLAVI P	MBA	47
240	VINOTH M	MBA	47
241	HARIHARAN R	CIVIL	50
242	PREETHI K P	MBA	50
2012 BATCH			
243	SURESH KUMAR C	MECH	GOLD MEDAL
244	DHIVYA S	EEE	2
245	ARCHANA ADARSH RAO	ICE	2
246	KARTHIKA K	MBA	2
247	KIRUTHIKA S	EEE	3

248	JEEVITHA R	ME (C&C)	3
249	JANANI S	ICE	4
250	SANGEETHA J	ICE	5
251	MENAKA S	ICE	5
252	SREENIVAS R	IT	5
253	AARTHI G	ME (PED)	7
254	SRINIDHI S	ECE	8
255	NAVEENA A	ICE	8
256	YESHWANTH C	ICE	8
257	SANGEETHA M	ME (CS)	8
258	SANTHOSH SHANKAR	ECE	11
259	MUTHUKUMARAN S	MECH	11
260	KAIRUNNISSA S A	MCA	12
261	ABIYA J	ME (PED)	12
262	SIDDHANATHAN P	MCA	13
263	ANANTHALAKSHMI K IYER	CIVIL	14
264	SRIRAM V	ECE	14
265	PRAVEENA K	MBA	14
266	ILAKKIA PRIYA S	EEE	15
267	SANTHOSH S	MECH	16
268	ANNAPURRANI J G	IT	16
269	RAJESWARI K	IT	16
270	DINESH R	EEE	17
271	TARUN KUMAAR G	MECH	17
272	AKSHAYA R	ECE	18
273	ASHWITHA S	CIVIL	19
274	NAGASUBRAMANIYAN V	EEE	19
275	AARTHI N	IT	19
276	SANDHIYA G	MBA	19
277	AYESHA TEHSEEN K	CSE	20
278	SINDHU R	ECE	20
279	GANESHRANGARAJAN J	MBA	20

280	SANTHOSHI BHARGAVI G	EEE	21
281	BHARATH WAJ A	MECH	21
282	DHANALAKSHMI J	CSE	23
283	PRAISY FAITH J	EIE	23
284	VAITHEESWARAN S	MECH	23
285	RAJMOHAN S	MBA	23
286	SUGANYA S(07-10-1990)	IT	25
287	SHALINI P	IT	25
288	SRIVATSAN S	CSE	26
289	SRIRAM VIGNESH S	ECE	26
290	SATHISH KUMAR T	MECH	26
291	SRIRAM R	CSE	27
292	GEETHA M	MBA	27
293	SAI KRISHNA S	EIE	28
294	NAVEENKUMAR R	MECH	32
295	SARANYA B	MCA	32
296	ROHINI DEVI T	MBA	32
297	SHEROLIN PREETHI	CIVIL	33
298	SAKTHIPRIYA R K	EEE	33
299	DIVYA KRISHNAMOORTHY	EIE	33
300	BHAVITHRA D	IT	33
301	ANITHA A	MBA	33
302	MAHALAKSHMI M	ECE	34
303	SATHISH KUMAR R	IT	34
304	BHUVANESWARI A	MCA	34
305	NEHA S	MBA	36
306	KEERTHIVARMAN V T	MBA	36
307	VIJIN STEPHI M L	CSE	37
308	MOHAN RAJ S	IT	37
309	KAVITHA E	MBA	37
310	JOSE JERALD DAS M A	CIVIL	38
311	REENA GRACE S	ECE	38

312	SIDDHARTH UPADHYA R S S	MECH	38
313	MATHI ARASI M	MBA	38
314	ARUN KUMAR R	CIVIL	39
315	PRASITHA K	ECE	39
316	ABIRAMI B M	ECE	39
317	THIYAGARAJAN M	MECH	39
318	JANANI R	MCA	39
319	SOWMYA R	MCA	40
320	AARTI PREYAA C S	MBA	40
321	IMRAN AKHTHAR B	CIVIL	41
322	VIJAYARAGAVAN M	CSE	41
323	KANAGA SUNDARI K	EEE	41
324	ARUNACHALAM M	MECH	41
325	REKHA M	MBA	41
326	SIVAKUMAR CHELLAPPAN	MBA	41
327	PUSHPALATHA V	MBA	41
328	DILIPAN G	MBA	41
329	BARANIPRIYA R	CSE	42
330	BANUMATHI V	MCA	42
331	ARUMUGAM PILLAI M U	CSE	43
332	MEENAKSHI MR	CSE	43
333	SOWMYA K	CSE	44
334	SANDHIYAN R	MECH	44
335	NIAZ AHAMED M	MBA	44
336	AISHWARYA R	EEE	45
337	SAI SHRUTHI S	EIE	45
338	PRASSANNA VENKATESH S	MECH	45
339	AGILEISH J	MECH	45
340	PRASHANTH C S	CIVIL	46
341	KAVITHA K	CSE	46
342	NAGA DARSHANA J	CSE	46

343	PURNIMA K	EIE	46
344	VISHNU PRIYA R	MBA	46
345	VINODINI S	EEE	47
346	SARANYA S(15-DEC-90)	IT	47
347	PAVAI K P	MBA	47
348	PRIYADHARSHINI M [01 JUL 1985]	MBA	47
349	AISHWARYA K	MBA	47
350	SRINIDHI MEENAKSHI S	EEE	48
351	REVATHI S	EIE	48
352	ROSHNI G	EIE	48
353	HARI VIGNESH IYER	IT	48
354	DEEPAN M	CIVIL	49
355	KUZHALISAI M	CSE	49
356	SWETHA J	EEE	49
357	MALAR VIZHI K	EEE	49
358	GAYATHRI R	IT	49
359	PRIYA A	CIVIL	50
360	RAMYA S	EEE	50
361	SYEDALIFATHIMA K	ECE	50
362	CHANDHINI S	EIE	50
363	HARISH VIJAYKUMAR S	MCA	50
364	ISHWARYA C	MBA	50
2013 BATCH			
365	ATEETH KUMAR T	ICE	GOLD MEDAL
366	AMARESH V	PROD	GOLD MEDAL
367	RINI FRANKLIN F	ME (CC)	GOLD MEDAL
368	SVETHA J	ICE	2
369	BARGAVI R	PROD	2

370	SAMPATH RAJ K	ME -C/C	2
371	PRABHU MANI RATHINAM S	ME-C/C	3
372	BUVANESWARI M	ME-CC	3
373	DHIVYA S	ICE	4
374	CAROLINE JENNIFER J A	ME-CSE	4
375	ADITHEYA VARTHAN M	PROD	4
376	SATHISH S	PROD	4
377	DYANA JOSELINE	CIVIL	5
378	NIVEDHA E	ME-CC	6
379	SIVASAKTHI T	CS- ME	6
380	SUBASHREE SOUMYA KANNAN	EST - ME	6
381	KEERTHANA M S	EEE	7
382	SUDARVIZHI S	CS- ME	7
383	PRINCY J	EEE	8
384	SARANYA B	IT	8
385	VETRE SELVAN E	ME - C/C	8
386	GILTON THOMAS P G	EIE	9
387	PREETHI R S	MECH	9
388	SRIDHAR R	EEE	10
389	LAXMI J	EIE	10
390	THAMARAI SELVI B	ME-CSE	10
391	SRUTHI S	EIE	11
392	NANDHINI R	ME-CSE	11
393	VINODHINI M	EIE	12
394	ASMITHA J S	IT	12
395	RAMPRAKASH S	EEE	14
396	DEEPIKA B	EIE	15

397	MANOJ S	EEE	16
398	SUPRAJA M V	ME-CS	16
399	ANEES FATHIMA S	ME-CS	17
400	LAVENYA B	ME-CS	17
401	PRAKASH J	ME-EST	17
402	SUBHA ASHWINE S	MBA	17
403	MEENALAKSHMI M	ME-EST	18
404	JENAKA G	ME-PE	18
405	RAMYA KRISHNAN V	CSE	19
406	LAVANYA M	CSE	19
407	JANANI PRIYA A N	EIE	19
408	EZHILARASI M	EEE	20
409	VAISHNAVI R	IT	20
410	MARI RAM KUMAR M	MECH	20
411	VIVEK T R	MECH	20
412	VIGNESH KUMAR R	EIE	21
413	SUJEETHA G	MCA	22
414	VARALAKSHMI M	ME-CSE	23
415	SARVATHA S R	CSE	24
416	ALICE JOSEPHINE R	IT	24
417	RAMALAKSHMI U	MBA	24
418	GAYATHRI K	CIVIL	25
419	ANU B	ECE	25
420	HARINI RAVI	EIE	26
421	ARCHANA S	ME-CS	26
422	LAKSHMY A	ECE	27
423	HEAMANTH R	EIE	28

424	SARANYA E	EIE	28
425	AISHWARYA P T	CSE	29
426	NIVEDHA P	ECE	29
427	VISHNUPRIYA S	IT	29
428	BALAMEENAKSHI S	ME-CS	29
429	ARUN KUMAR R	CSE	30
430	PUNNAMARAJU ALEKHYA SAI	EIE	30
431	VIGNESH L	EIE	30
432	SRI DHARSHINI M	CIVIL	31
433	SELVAPRAKASH P	CSE	31
434	SAIPRIYA S	ECE	31
435	KRITHIGA M	MBA	31
436	SHANMUGA PRIYA D	CIVIL	32
437	SREEJA S	CSE	32
438	BHARATHI R V	ECE	32
439	SIVAGAMA SUNDARI A P	ECE	32
440	SRIVATSAN L	MECH	32
441	VINOD KHANNA S	MECH	32
442	SRIRAM SRINIVASAN	MECH	32
443	ANUSHA MURTHY	EIE	33
444	NIDHI MENON U	CSE	34
445	MAGESHWARI D	IT	34
446	CHIRANJEEV P JAIN	MECH	34
447	SRINIDHI V	EIE	35
448	HARIHARAN D	MBA	36
449	PURVISHA P S	IT	37

450	NIKILA G	ECE	38
451	BARATH KUMAR P	ECE	38
452	KOWSALYA K	CSE	39
453	SHANMUGANAND S	EEE	39
454	SATHYANARAYAN R	MECH	39
455	LAVANYA S	MBA	39
456	PRAVEENA P	ME-PE	39
457	POORNIMA G	EIE	40
458	REVATHI S P	MCA	40
459	ANITHA B	ME-CSE	40
460	DONA JOICE A	CS- ME	40
461	TAMIL SELVAN K R	CIVIL	41
462	NANDHINI N	ECE	41
463	PRIA M C	ECE	41
464	POOJA SANTOSHI GSSK	IT	41
465	VENKAT RAMAN G	MECH	41
466	PRADEEP KUMAR M	MBA	41
467	KIRUTHIGA R	ECE	42
468	UPASANA G	EEE	42
469	CHELLAKUMAR S	EEE	42
470	AARTHISWARI N	MBA	42
471	UDHAYASRI M	ECE	43
472	MANJULADEVI M	IT	43
473	NAVEEN KUMAR S	CIVIL	44
474	SATHISHKUMAR R	EEE	44
475	HARI PRASATH H	EIE	44
476	PRIYANKA G	EIE	44

477	DHIVYA M	IT	44
478	KRISHNA H	MECH	44
479	DIVYA P	MBA	44
480	RABIYATHUL BHASARIYA A	CIVIL	45
481	NIKITA TAYAL R	EIE	45
482	BALASUBRAMANIAM S P	EIE	45
483	LALITH KUMAR S	MECH	45
484	NARAYANI K S N	ECE	46
485	ADITHYA M	EEE	46
486	DIVYA D	MBA	46
487	MALARKODI S	CSE	47
488	RENUKA V	MBA	48
489	ARUN SAROJ A N	EEE	49
490	SUREKA P	EEE	49
491	BHAVYA B	IT	49
492	MOHANA PRIYA S	MBA	49
493	SRI SOWMIYA M	EIE	50
494	MRINALINI P K	ME-CSE	50
2014 BATCH			
495	LAKSHMI KANTHAN M	CIVIL	GOLD MEDAL
496	VASANTHA N	ICE	GOLD MEDAL
497	AMRITHA PRAKASH	PROD	GOLD MEDAL
498	GOWTHAMI R	M.E. - EST	GOLD MEDAL
499	BIMAL KUMAR MANSINGH	ICE	2
500	LAKSHMI G	IT	2

501	ANNAPURANI V	EIE	3
502	SUDARSHAN GOVINDARAJAN	ICE	3
503	DWARAKESH R	MECH	3
504	DINESH KUMAR D	PROD	3
505	YAZHISAI M	M.E. - EST	3
506	DIVYA ANANDHI T	CIVIL	4
507	KRITHIKA S	ICE	4
508	NIRANJAN RAJA R	MECH	4
509	VENKATAKRISHNAN S L	PROD	4
510	VIGNESH K	PROD	4
511	SANDHIYA M	M.E.-CS	4
512	MAHENDRABABU K	M.E. - EST	4
513	VIJIN STEPHI M L	M.E.-CSE	4
514	MATHUNIKA V R	ICE	5
515	KARTHIK KUMAR S	PROD	5
516	SINIJOY P J	M.E. - CC	5
517	KEERTHANA M	ECE	6
518	JOTHILAKSHMI P	ICE	6
519	ARUN KUMAR N	M.E. CAD/CAM	6
520	LAVANYA M	M.E. - CC	6
521	ABISHEK V	ECE	7
522	SARANYA R	EIE	9
523	MARUTHI KISHORE R A	MECH	9
524	SOUNDARAM N	M.C.A.	9
525	HARI HARAN V	M.E. - EST	9
526	PADMA PRIYA P T	M.E. - EST	9
527	SANTHANA KRISHNAN R	MECH	11
528	KOTESWARI V	M.C.A.	11
529	PRAVEEN KUMAR K	M.E. CAD/CAM	11
530	KANNAPPAN S	M.E. CAD/CAM	11

531	SAIKEERTHI S P	M.E. CAD/CAM	12
532	VENKATA RAMANAN K	CIVIL	13
533	VIJAYA LAKSHMI R	IT	13
534	HIMALAYA B	M.E. - CC	13
535	KARTHIK T	EIE	14
536	HAREE KUMARAN T S	MECH	14
537	AMUDHA BHARATHI B	M.E. - CC	14
538	KALAIVANI G	CSE	15
539	BHAVITRA MB	M.E.-CS	15
540	SIVA BARGAVI R	CSE	16
541	ANJANA V	EEE	16
542	EZHIL BHARATHI P E	EIE	16
543	SANTHOSH KUMAR V	MECH	16
544	DURGA PRIYA G	M.E. - CC	16
545	SUGANYA R	CIVIL	17
546	BOOPATHI M	MECH	17
547	DIVYA V	M.C.A.	17
548	ABHINAV VENKATRAMAN	EEE	18
549	SWASINI SUDARSAN	EIE	18
550	JUNAID KOKAN S	MECH	18
551	GAYATHRI V	IT	18
552	KAMESH S	EIE	19
553	REKHA P	CSE	20
554	BHARATHI B	ECE	20
555	AKSHAYAA P	EIE	20
556	SUBRAMANIAN VR	EIE	20
557	KIRITHIKAA S	EEE	21
558	GAYATHRI R	ECE	21
559	RAVISHANKAR R	MECH	21
560	SHYAMSUNDAR P	MECH	21
561	KANMANI R	IT	21

562	AARTHY A	M.E.-CS	21
563	SEETHALAKSHMI R	M.E. - CC	21
564	AJEY VISHAL S K	MECH	23
565	ANUSUYA C	M.E.-PED	23
566	KAUSHIK RAO R	EEE	24
567	SARANYA M	EIE	24
568	LEENA ROSLIN JENIFER M	M.E.-CS	24
569	GOKUL RAJ S	EEE	25
570	SIBANI SENJI P	ECE	25
571	RAGHAVENDRAN S	CIVIL	27
572	MANOJPRABAKAR S	EEE	27
573	SAISHRUTHI S	EIE	27
574	STEPHANIE VIANNA G	IT	27
575	VIDYA S	M.E.-CSE	27
576	RAJESH KUMAR A	EIE	28
577	HARIPRASAD A S	MECH	28
578	RAMYA V S	CSE	29
579	VAISHALI R	CSE	29
580	ANANDHI Y	EEE	29
581	VISHRANTHEE G	EEE	29
582	RAMAKRISHNAN K B	M.B.A.	29
583	ISWARYA S	M.E.-CS	31
584	PRATHIBHA J S	M.E.-CS	31
585	SAI NIVEDITHA K	EIE	32
586	GIRIJA V	IT	32
587	RAMYA R M	M.B.A.	32
588	VIDYA T	EIE	33
589	SHALINI C	M.B.A.	33
590	SHRUTHI P	EEE	34
591	ASHOK KUMAR S	EEE	35

592	GOKILA G	EIE	35
593	PRASHANTH T	MECH	35
594	KRISHNA KUMAR D	MECH	35
595	KRISHNA PRIYA M	IT	35
596	NISHA R	M.E.-CSE	35
597	BHAVANI J	CIVIL	36
598	ARAVINDHA RAAJ A	CSE	36
599	SRIRAM R	EEE	36
600	ARAVIND R	EIE	36
601	MADHUPRIYA C	EIE	36
602	HARIKA SADASIVUNI	M.E.-PED	36
603	SRI VIDHYA G	EEE	37
604	ANAND S	EEE	37
605	BHAGYALAKSHMI G	CSE	38
606	KRISHNAVENI M	CSE	38
607	VIJAY PRITHIV B R	MECH	38
608	VINOD KUMAR R	CIVIL	39
609	NAVIN A S	CIVIL	39
610	RANGARAJ K S	ECE	39
611	SHRIRAM S B	EIE	39
612	THIRUNAVUKKARASU PL	MECH	39
613	PANDIYAN K	EEE	40
614	VENKATESHWARAN M	MECH	40
615	SAIPRIYA R	IT	40
616	NITHYA M	IT	40
617	ISWARYA M	M.B.A.	40
618	VENUGOPAL R	CIVIL	41
619	RASHINA BANU R	M.B.A.	41
620	LAVANYA R	M.E.-CSE	41
621	AISWARYA S	CSE	42

622	SRIRAM V	EIE	42
623	AISHWARYA K	IT	42
624	VAISHNAVI S [18 DEC 1992]	IT	42
625	VIPITH P	M.E.-CSE	42
626	ANITHA P	CIVIL	43
627	PRIYA R	CSE	43
628	SWAPNIL J	EEE	43
629	SOWMYA S	CSE	46
630	AIYSWARYA S	EIE	46
631	SRIKRISHNA C	EIE	46
632	RAMA SUBRAMANIAN M	MECH	46
633	NAVIN N	IT	46
634	PREETHA M	M.B.A.	46
635	DIVYA S	M.E.-CSE	46
636	VINOTH KUMAR K	M.E.-PED	46
637	RAJALAKSSHMI K C	EIE	47
638	SANGAMI R	EIE	47
639	ANITHA K	CSE	48
640	HEMALATHA M	M.C.A.	48
641	SUNIL KAASHYAP B N	MECH	49
642	RAMPRAKASH K	MECH	49
643	INITHA G	IT	49
644	SHANMUGASUNDARI A	EEE	50
645	MAHALAKSHMI V	EEE	50
646	SWATHI S	EIE	50
647	VIGNESHWAR G	M.B.A.	50
648	VANDANA B	M.E.-CS	50

2015 Batch

649	DIVYAPRIYA D	CIVIL	GOLD MEDAL
650	SNEHALAKSHMI V	ICE	GOLD MEDAL
651	TAMILSELVAN V	MECH	2
652	ARUNPRASADH S	PROD	2
653	KAVITHA S	ME CSE(N)	2
654	ASHWINI K	ME CSE(N)	2
655	JANANI R	CSE	3
656	RESHMAA DIVAKAR	EEE	3
657	NANDHINI J RAO	EIE	3
658	HINDUJA G	ICE	3
659	ARUN KUMAR AKASH S	MECH	3
660	GOPIKRISHNAN K	PROD	3
661	MANJU PARKAVI M	CSE	4
662	ANU PRIYA C	EEE	4
663	SUGANYA S	ICE	4
664	KRISHNA S	MECH	4
665	ANU SABARE SREE M S	ME CS	4
666	PRASHANTHI S	EEE	5
667	ABHINAV KARTHIK S	EIE	5
668	KAVERI R	ICE	5
669	SRIRAM V	PROD	5
670	HEMAVATHI M	CSE	6
671	VIJAYA GANESH M	ICE	7
672	SELVAKUMAR P	PROD	7
673	NIVETHA MANI M	ME CSE(N)	7
674	VAISHALI G	ICE	8
675	DHIK VIJAY J	PROD	8
676	VENKATESAN P	ME/CAD-CAM	8

677	ABINAYA SINDHU S	ME EST	8
678	BHAKAVI S	MBA	8
679	AKSHAYA R	CSE	9
680	LAAVANYAA G	EEE	9
681	GOWSALYA DEVI M	ME CSE(N)	9
682	NIRANJANA NARAYANAN	CIVIL	10
683	JAYA CHITHRA R	ICE	10
684	RAJA LAKSHMI B	IT	10
685	MUTHULAKSHMI G	ME PED	10
686	VAISHALI V	ICE	11
687	SARAVANA KUMAR J	MECH	11
688	SANJNA SURESH	CIVIL	12
689	SAI PREETI V	ICE	12
690	SIDDHARTH RAM M R	MECH	12
691	RAMAPRABHA M	ME PED	12
692	AISHWARYA V S	ECE	15
693	ANIRUDH R S	MECH	15
694	SUNDARRAJAN R	MECH	15
695	RAJALAKSHMI A	ECE	16
696	KANIMOZHI K	EIE	16
697	THEJAS SATHYA B	MECH	16
698	KOMAGAL RAJA PRIYA K	ME PED	16
699	VANAMALINI T S	ME EST	16
700	PRASANNA VENKATESH L R	Mech	17
701	NIJANTHAN S	ME/CAD-CAM	17
702	PRIYADHARSHINI K	ME CSE	18
703	PAVITHRA B L	ECE	19
704	SIVARANJANI S	ME EST	19
705	DEEPIKA S	MCA	19
706	REVATHI J	CSE	20

707	VAISHNAVI S	ECE	20
708	PRADEEP R	EIE	20
709	VINOTHKUMAR V S	MECH	20
710	SANTHOSH SHANKAR A	MECH	21
711	DHINESH D S	EEE	22
712	SHRINIDHI D	ECE	22
713	ANKIT KUMAR KOTHARI	MCA	22
714	PADMASHRI R	CSE	23
715	KAMALA LAKSHMI S	EEE	23
716	RAGAV V	MECH	23
717	PAVITHRA V	IT	23
718	VEVETHA C S M	CSE	24
719	SAFIA SHEERIN A	EIE	24
720	DEVAKI M	EIE	24
721	SUHASHINI D	ME PED	24
722	REVATHI S	MCA	24
723	MANGAYARKARASI T	CSE	25
724	PAVITHRA R	EIE	25
725	RAMKISHORE P R	MECH	25
726	KAVIN C	MECH	25
727	ANUSUNDARI P	EEE	26
728	VISHAL M	MECH	26
729	KRUPA SWATHI R	IT	26
730	KIRUTHIKA R	CIVIL	27
731	ABIRANJAN P	EIE	27
732	DARSANA B S	ME CS	28
733	NAGALAKSHMI KANNA P	ME PED	28
734	BINU E	ME EST	28
735	DURGA T	MCA	28
736	JEYANTHI S	MCA	28

737	LATHA SANKARI S	EEE	29
738	JAYALAKSHMI V	ECE	29
739	JANANI K	EIE	29
740	KALAIARASI B	MCA	29
741	SRIRAM R	CIVIL	30
742	RAJAPRIYA T	ECE	30
743	SWATHIPRIYA M	EIE	30
744	RAMYA B	CSE	31
745	KARTHIGA H	CSE	32
746	NAVASAKTHI GAYATHRI S	EEE	32
747	PRANAV K P	EEE	32
748	SNEHA M	CSE	33
749	RENUKA DEVI C	IT	33
750	DHARAGESHWARI K	ME PED	33
751	SINDHUJA J	EEE	34
752	SARADHA S	ECE	34
753	HARSHINI P	EIE	34
754	HAREESH M S	MECH	34
755	PRASAATH G T	MECH	34
756	MUTHU BALA SELVI J	ME EST	34
757	SWETHA THOMSON A	EEE	35
758	ANNAMALAI R M	Mech	35
759	JAIPREYA S	CIVIL	36
760	SURREKHA B	CIVIL	36
761	KAVITHA V	CSE	36
762	VANGAVOLU SAI SINDHUJA	CSE	36
763	RAMYA S	CSE	36
764	SNEHA B	CSE	36
765	SIVARANJANI M	ECE	36
766	SHARMILA R	EIE	36

767	SAKTHI R	MECH	36
768	AARTHI K	IT	36
769	ARCHANA S	ME CSE	36
770	HARIHARAN S	MBA	36
771	KAUSALYA S	MBA	37
772	JUBHA SHALINI G	MBA	37
773	NIRANJHANI V	CSE	38
774	SAI SHANKAR B	EEE	38
775	VIGNESHWARAN E	EEE	38
776	MANIKANDA PRABHU R	EIE	38
777	MANOJ KUMAR A	MBA	38
778	KAVITHA R	EEE	39
779	JAYALAKSHMI V	EEE	39
780	NUSRATH NASREEN FATHIMA S	ECE	39
781	SAYEE GOKKUL G	MECH	39
782	GEETHA N	IT	39
783	MEENAKSHI M	ME PED	39
784	PRIYADHARSINI S	MCA	39
785	RAGHAVENDRAN G	CSE	40
786	MUGESH E	MBA	40
787	LAKSHMI PRIYA S	EIE	41
788	VISHAL S	CSE	42
789	BUVANESWARI V	ECE	42
790	SIVAGAMI M	IT	42
791	ABINAYA S	IT	42
792	SAMYUKTHA G	CSE	43
793	SOWMIYA R	EEE	43
794	SARAVANA PRASAD R	EIE	43
795	SUBARSHAN R	CSE	44
796	ADITHYA RAMGOPAL	MECH	44

797	AKSHAYA R	MCA	44
798	JAYANTHI K	MCA	44
799	SANDHYA M	CSE	45
800	PRIYADARSHINI A	IT	45
801	MAHALAKSHMI S	MBA	45
802	SHAILENDAR K K	ECE	46
803	PARASURAMAN V	ECE	46
804	SRIMATHI E	CIVIL	47
805	PRIYANGA R	CIVIL	47
806	SAMBATHRAJ A	ECE	47
807	SHARATH T	ECE	47
808	EARLA PRASHANTH	CIVIL	48
809	DHANANJAY BHARADWAJ	EEE	48
810	SABARISH V	MECH	48
811	MALAVIKA N	IT	48
812	KRISHNAN D	IT	48
813	PRABHAKARAN S	ECE	49
814	SWETHA C	CSE	50
815	GOWTHAM K	EEE	50
816	GAYATHRI DEVI M C	ECE	50
817	SOWMYA K R	MBA	50
818	RAMYA M	MBA	50
2016 Batch			
819	AISHWARYA S	ICE	GOLD MEDAL
820	GANESH B	MECH	GOLD MEDAL
821	JOHN PRAVEEN J	PROD	GOLD MEDAL
822	ADIN SHIRLY P	EST	GOLD MEDAL
823	NIRANJANA J	CSE(N)	GOLD MEDAL
824	JAYASHRI M	CSE	2

825	NIRANJANA M	EEE	2
826	DHEEPA SENTHIL VEL	ICE	2
827	HASHVANTHANI G	PROD	2
828	ANU MEENAKSHI S	IT	2
829	PRISCILLA G	EST	2
830	LESNA P M	Civil	3
831	VIGNESHVARUN K	CSE	3
832	MAHALAKSHMI RS	EEE	3
833	AISWARYA R	ECE	3
834	ANSIKA M	ICE	3
835	ANDREW JIJIN J	MECH	3
836	RAJENDRA CHOZHAN G	PROD	3
837	DHIVYA RADHAI T H	CSE(N)	3
838	PAVITHRA B	CSE(N)	3
839	KANIMOZHI M	MBA	3
840	MENITA KM	ICE	4
841	JAYA KUMAR K	CAD	4
842	SARASWATHI S	EEE	5
843	SIVARANJANII R	EEE	5
844	RAJESH P	IT	5
845	GOWTHAMAN S	CAD	5
846	MOUNIGA J	CS	5
847	SHRUTHIMEENAKSHI S H	ME CSE	5
848	PAVITHRA M	CSE	6
849	SHRUTI K	EIE	6
850	VENKADESH B	MECH	6
851	PRINCY W	PED	6
852	CHITRA R	MCA	6

853	SUDHARSAN S	MBA	6
854	SAI VAISHNAVI S	EIE	7
855	MADHUMITHA S	ICE	7
856	SARAVANA KUMAR P M	MECH	7
857	RAJESH V	PROD	7
858	SHOBANA A	MBA	7
859	UDHAYAKALA T	Civil	8
860	DHARANA LAKSHMI V	EEE	8
861	MAHESWARI E	EEE	8
862	PREETHI K	ICE	8
863	DHARMARAJ K	PROD	8
864	MONICA MERLIN N	ME CSE	8
865	KAVISINDHU K	PED	8
866	DEVIGA D	MCA	8
867	JAYASHRI S	CSE	9
868	AKILANDESWARI N	EIE	9
869	SHARATH KUMAR P	ICE	9
870	BHARATHI VIDHYA C	ICE	9
871	MADHUMITHA A	Civil	10
872	PRADESH KUMAR G	EEE	10
873	RAJENDRA AVINASH	ECE	10
874	BHAVANI B	EIE	10
875	INDHU B	ICE	10
876	CATHERINE POORNIMA J	ME CSE	10
877	DHARANI S	EST	10
878	MEDHINI RB	EIE	11
879	JANANI S	ICE	11
880	JOANS ANNIE GRACE S	EST	11
881	RAJALAKSHMI K	Civil	12

882	RANJITHA S	CSE	12
883	JERSON S	ICE	13
884	SAHANA R	ICE	13
885	LAYA PRIYA V	CS	13
886	BAGYASRI G	EIE	14
887	MUTHU PARKAVI A	EIE	14
888	SAI SARAN KP	EIE	14
889	NIVEDHA S	ICE	14
890	PRIYADHARSHINI B	IT	14
891	PREETHI D	PED	14
892	MULLAI B	EST	14
893	ANGELINE C J	CS	15
894	VYSALI V	EEE	16
895	BHAVYA U	IT	16
896	NANDHINI G	EIE	17
897	JEROME EMILIANA PAULIN S	CS	17
898	ARUN V	MBA	17
899	VIGNESHWARAN S	CSE	18
900	SWETHA M	EIE	18
901	SIVAGAMA SUNDARI M	CSE	19
902	RAMYA V	EIE	19
903	PAVIT S	IT	19
904	KANIKA SHARMA	EST	19
905	BALAJI R	Civil	20
906	SHALINI S	CSE	20
907	AISHWARYA R	IT	20
908	BALAMURUGAN E	PED	20
909	SAIKIRUBHA M	Civil	21
910	SUDHARSHINI B	EIE	21
911	RAVIKUMAR V	MECH	21
912	VINODHINI R	MCA	21

913	GEETHA DEVI R	MCA	21
914	VINAYAK S R	EEE	22
915	NIRMALA B	IT	22
916	ANITHRA A	MCA	22
917	ARUN RAJ N	Civil	23
918	SRINIVASAN I	CSE	23
919	RAJESWARI B	EEE	23
920	PRANESH H M	MECH	23
921	REVATHI V S	IT	23
922	POORNIMA DEVI S	Civil	24
923	ROYSTON RANJIT CORREYA A	MECH	24
924	PREETHI S	IT	24
925	RAHUL KUMAR	EEE	25
926	KOKILA D	ECE	25
927	SATHYA S	ME CSE	25
928	SARANYA D	MCA	25
929	INDHUMATHI K	ECE	26
930	ASHWIN VIGNESH R	MECH	26
931	VINOTH V	Civil	27
932	MONICA D	EIE	27
933	NANDHINIDEVI A	MBA	27
934	PULANJANA SAHA	ECE	28
935	ANITHA S	CS	28
936	SUSHMA S JAGTAP	CS	28
937	GAYATHRI S	PED	28
938	LAKSHMISRI S	MCA	28
939	NITHIN KUMAR P	Civil	29
940	VIJAYA LAKSHMI N	ECE	29
941	SIVASAKTHI J	CS	29
942	AARTHI R	CSE	31

943	REVATHY PRIYA R	EIE	31
944	THANGA RATHNA B	EIE	31
945	JAYARAJALAKSHMI G	CS	31
946	RANJITHA P	ME CSE	31
947	DEEPAK KRISHNA S	MBA	31
948	KALIESWARI DEVI M	CSE	32
949	AISHWARYA H	ECE	32
950	HARIHARAN S	EIE	32
951	PRIYANGA L	CS	32
952	KALAIMADHI M	MCA	32
953	SHAMEERA THABASUM A	MBA	32
954	SRINIVASAN S A	CSE	33
955	UTHIRA S	EEE	33
956	VISHNU PRATAP D	MECH	33
957	YAMINI R	IT	33
958	KAYATHRI S	IT	33
959	VAISHNAVI G	MBA	33
960	JAYABHARATHI S	Civil	34
961	KARPAGA SUGUNA A	MBA	34
962	SOORYA RAMACHANDRAN	CSE	35
963	GEETHANJALI G	CSE	35
964	NANCY ANTONIRAJ	EEE	35
965	JASMINE JENNY BALA M	ECE	35
966	VARSHAA MURALIDHARAN	IT	35
967	DHIVYA M	PED	35
968	AJILA HEXIL S	Civil	36
969	SANJAY SHARMA SB	CSE	36
970	NIVEDHA V	CSE	36
971	DIVYA N	CSE	36
972	GOVARDANAM	EIE	36
973	ABIRAMI K	IT	36

974	HEMALATHA S	CS	36
975	PAVITHRA R	EEE	37
976	SOWMYA K	EEE	37
977	SANGEETHA M	ECE	37
978	SRUTHI MOHAN	CS	37
979	SATHIYAPRIYA P	ME CSE	37
980	SANDHIYA S	PED	37
981	IMAYA U	CSE	38
982	VASANTH ADITHYA S	MECH	38
983	POORNA PUSHKALA K	ME CSE	38
984	ADITHYA D	Civil	39
985	AYSWARYA K	CSE	39
986	SINDUJA S	EEE	39
987	EZHILARASAN V	EIE	39
988	VENKATESASANKAR V	MECH	39
989	GEETHA PRIYA N	IT	39
990	DIVYA S	CSE	40
991	BALIKA G	CSE	40
992	ASHWIN KUMAR MU	ECE	40
993	DIVYA R	EIE	40
994	BHARATH G	EIE	40
995	ISWARYA DEVI V	IT	40
996	PADMASINI R	CSE	41
997	SUGANYA S	ECE	41
998	ASHMITHA RAKSHAMBIGAI V B	IT	41
999	NITHYA S	CS	41
1000	SNEHA M	ME CSE	41
1001	PAVITHRA G	MBA	41
1002	JAYALAKSHMI C	Civil	42
1003	NIDHIN A V	Civil	42

1004	GOPI KRISHNA S	ECE	42
1005	SANDHIYA S	ECE	42
1006	SRIRAM P	ECE	42
1007	NIVETHA R	EIE	42
1008	ANIRUDH P R	MECH	42
1009	JOSHUA PRAVEEN KUMAR S	MECH	42
1010	ANANDKUMAR D	MECH	42
1011	SANTHOSH T	ME CSE	42
1012	ABIRAMI R G	MBA	42
1013	BHAVANI M (1992-04-28)	MBA	42
1014	ABIRAMI R	CSE	43
1015	KIRON KUMAR V	MCA	43
1016	LOGESH K	MCA	43
1017	JEYSREE N	Civil	44
1018	DEEPIKA SELVARAJAN	Civil	45
1019	ANBUCHANDRA C	CSE	45
1020	HEMALATHA R	ECE	45
1021	VIGNESHBABU TN	EIE	45
1022	KARTHIK BABU R N	MECH	45
1023	RAHUL SM	MECH	45
1024	BHARATH S	MECH	45
1025	GOWRI A	CSE	46
1026	JEEVITHA T	CSE	46
1027	GEETHU ABINAYA R	ECE	46
1028	PRATHEEPA A	EIE	46
1029	PURUSHOTHAMAN R	MECH	46
1030	SUGANYA V	ME CSE	46
1031	SHARMI K	Civil	47
1032	ABINAYA M	EEE	47
1033	SUPRIYA J	ECE	47

1034	GHAYATHREE S V	MBA	47
1035	ARAVIND S	CSE	48
1036	SATHANA V	ECE	48
1037	PRASANNA KUMAR R	ECE	48
1038	MAHALAKSHMI S	EIE	48
1039	MOHAN J	MECH	48
1040	VELMURUGAN S	MECH	48
1041	SWATHY S	IT	48
1042	DHIVYA A	IT	48
1043	PREETHIMA J J	MCA	48
1044	KAUSHIKA A	EEE	49
1045	LIVIYA P	EEE	49
1046	SATHYA PRIYA S	EEE	49
1047	BOWYA B	EEE	49
1048	DEVARAJ T	EEE	49
1049	RAJESWARI S	IT	49
1050	JANANI K	Civil	50
1051	PRIYANKA R (1994-12-08)	CSE	50
1052	KRISHNA PRIYA G	EEE	50
1053	PAVITHRA M	EEE	50
1054	VINU VARSHITH G	EIE	50
2017 Batch			
1055	RENI CLENITIAA F	EEE	GOLD MEDAL
1056	SARIKA S	IT	GOLD MEDAL
1057	APARNA RAVICHANDRAN	E&I	GOLD MEDAL
1058	VAISHALY R	ICE	GOLD MEDAL
1059	SAIDURGA K	E&I	2
1060	SWATHI T E B	ICE	2
1061	SHIVI AGARWAL	CSE	3
1062	YUVARANI K S	ICE	3

1063	AKSHAYA PRABAKAR	PROD	3
1064	SINDHUJA S	CSE	4
1065	RAMYA G	ECE	4
1066	ASHWIN SWAMINATHAN S	PROD	4
1067	SUPRAJA K R	ICE	5
1068	PRISCILLA CAROLINE R	ICE	5
1069	SHANMUGA PRABHA P	ME (EST)	5
1070	PRIYA VARSHINI G	E&I	6
1071	RATHIN ARUN KUMAR M A R	PROD	6
1072	SIDDHARTH A G S	MECH	6
1073	SWATHY D	EEE	7
1074	ILAKYA E	EEE	7
1075	NISHANTH J	E&I	7
1076	SRINIDHI K	ICE	7
1077	PRIYANGA RUBENI D	ME (COMM.SYS)	7
1078	KIRTHANA R	CSE	8
1079	JAISA MARIAM JACOB	ME (COMM.SYS)	8
1080	LAVANYA R	ME (PED)	8
1081	HARINI DEVI R	ICE	9
1082	VISHALINE C G	MECH	9
1083	PREYANKA P	EEE	10
1084	VIJAYALAKSHMI S	CSE	10
1085	MORAM JYOSHNA	EEE	11
1086	SUBASRI R S	CSE	11
1087	AARTHI V	E&I	11
1088	VASANTHA KUMAR K	ICE	11
1089	AKASH CHOWDHURY	MECH	11
1090	PRIYA AARATHI SIVA	MBA	11
1091	INDUJA N	MCA	11
1092	JAYA SURYA P	ME (CSE)	11
1093	NIVETHA K	ME (VLSI)	11

1094	NIVIA S	CSE	12
1095	SUBATHRA P	IT	12
1096	DIVYA B R	EEE	13
1097	RAKSHA D	E&I	13
1098	SWETHA M	IT	14
1099	ROSHNA ZUBAIR	E&I	14
1100	ABINASH A	MECH	14
1101	REVATHI A	MCA	14
1102	AISHWARYA J	EEE	15
1103	SUBHASREE R	ECE	15
1104	SANDHIYA V P	EEE	16
1105	NANDA KUMAR K	MECH	16
1106	SHRINIDHI K S	E&I	17
1107	ANUDEEPI C	MBA	17
1108	YAMINI S	ME (COMM.SYS)	17
1109	ABHIJITH M	MECH	18
1110	SHARMILA P	ME (CSE)	18
1111	KARUNASREE P S	ECE	19
1112	DEVASENAH R	CSE	20
1113	PAVITHRA P	MCA	21
1114	LAKSHMI PRIYA T	MCA	21
1115	VASANTH S	MECH	22
1116	RAGAVI R	MBA	22
1117	GAYATHRI K	CSE	23
1118	SANDHIYA D	ECE	23
1119	SHIVARANJANI T	IT	23
1120	JENIFER VIDYA R	EEE	24
1121	SRIVIDYA S	EEE	24
1122	HARISUDHA K	CSE	24
1123	KARTHIKEYAN V	IT	24
1124	AISHWARYA G	EEE	25

1125	MOHAN KUMAR C	CSE	25
1126	APARNA G	ECE	25
1127	SABARINATHAN T	MECH	25
1128	BAVYA L	E&I	26
1129	CHARANYA M	E&I	26
1130	MAYURA P	ECE	27
1131	AISHWARYA M	EEE	28
1132	SRIRAM S	CSE	28
1133	LOGAPRIYA P	IT	28
1134	LAVANYA S	IT	28
1135	GIRIDHARAN J K	MECH	28
1136	RAHILA V	MBA	28
1137	UMARANI S	IT	29
1138	PRIYANKA M	MECH	29
1139	SUCHITRA S	MECH	29
1140	SHIVA RANCHANI S	EEE	31
1141	ISHHWARYA K	CSE	31
1142	AKSHAYA T S K	ECE	31
1143	ANUSHA S	ECE	31
1144	MEENA M	IT	31
1145	PRADHOSH L	E&I	31
1146	RAJA RAJA CHOZHAN V E	CIVIL	32
1147	VIGNESH P	ECE	32
1148	KAVYA NAVANEETHA KRISHNAN	E&I	32
1149	PRASHANTH R	ECE	33
1150	ROHNIE B	E&I	33
1151	GAYATHRI R (1996-07-14)	ECE	34
1152	ANITHA ANJELINE P	ECE	34
1153	LATHA S	IT	34
1154	BHARGHAVI S	IT	34
1155	ROHIT B K	MECH	34

1156	REKHA R	MBA	34
1157	ALAMELU K	CIVIL	35
1158	AISHWARYA B	CIVIL	35
1159	SUBHASREE S	ECE	35
1160	ANUSUDHA S	IT	35
1161	PRADEEP KUMAR S	MECH	35
1162	MANIMEGALAI A	CSE	36
1163	JENNIFER J	ECE	36
1164	JAGADEESWARI S	EEE	37
1165	KISHORE JOHNSAN S	CSE	37
1166	RADHIKA S	IT	37
1167	MUTHUKARUPPI M	IT	37
1168	RASHMI K	E&I	37
1169	ABISHEK N	MECH	37
1170	JAYASHREE J K	CSE	38
1171	PRIYANKA G	CSE	38
1172	SANGEETHA T	CSE	38
1173	KAVERIPAKKAM KUMAR BALAJEE	ECE	38
1174	PRAVEEN KUMAR R	E&I	38
1175	MAGESH D	MECH	38
1176	ILAPAKURTI SAI KRUTIKA	EEE	39
1177	JAYAKEERTHI A N	CSE	39
1178	RADHIKA S	MBA	39
1179	MAJISH K M	MCA	39
1180	MAHESWARI M	CSE	40
1181	SUNDARAPANDIAN K	MECH	40
1182	AYSHWARYA S	MBA	40
1183	RAHVI D	CSE	41
1184	SANGEETHA S	CSE	41
1185	SANJAI KUMAR K	ECE	41
1186	RAKESH P K	MECH	41

1187	BALAJI S	MECH	41
1188	MADHUMATHI A	EEE	42
1189	MOHANAPRIYA G	EEE	42
1190	SOLAI A L	IT	42
1191	SUBATHRA R	IT	42
1192	VENKATESH M (1996-01-31)	MECH	42
1193	LAVANYA R	MBA	43
1194	JAYAPRIYA K P	MBA	43
1195	RENUKADEVI P	MCA	43
1196	SHRIRAM V	EEE	44
1197	BHUVANESHWARI R	CSE	44
1198	LEELA RANJANI T	MBA	44
1199	HARINI K	MBA	44
1200	SAHANA M	CSE	45
1201	PRAMOD V	MECH	45
1202	KAMAR NISHA S	IT	46
1203	SINDHUJAA S L	E&I	46
1204	SARAVANAN M	MECH	46
1205	SANTHIYA S	ECE	47
1206	MRUGAPPHAN K	ECE	47
1207	AFZAL MOHAMED J	MECH	47
1208	BHARATHI R	EEE	48
1209	HARINI S	CSE	48
1210	VAISHALI V	IT	48
1211	DURGA U	E&I	48
1212	DINESH BABU R	MBA	48
1213	VIDHYA R	ME (CSE)	48
1214	NILISHA	EEE	49
1215	SOUNDARYA V	ECE	49
1216	PAUL DAVID M	MECH	49
1217	DEEPAK K	MECH	49
1218	SARAVANA KUMAR M	MECH	49

1219	SIVA SHANKAR G	ECE	50
1220	PAVITHRA S	ECE	50
1221	GAUTHAM M	ECE	50
1222	MEENA N	IT	50
1223	PRIYANKA R	MCA	50
1224	SWETHA C	ME (CSE)	50
2018 Batch			
1225	PRAVEENA N	EEE	GOLD MEDAL
1226	LEBURU GAYATHRI	ICE	GOLD MEDAL
1227	VIGNESH C	Mech	GOLD MEDAL
1228	SAI VISHWA KIRAN V	Prod	GOLD MEDAL
1229	SAI SUPRAJA R	CSE	2
1230	RASHMITA G M	ECE	2
1231	HEMAMALINI P	EIE	2
1232	KARPAGAM SP	ICE	2
1233	SRIRAAM M	Prod	2
1234	LINGESHWARAN K	EIE	3
1235	SUSHMI R	ICE	3
1236	PAVITHRA L	ICE	4
1237	GAYATHRI R	Prod	4
1238	KAVITHA R	Civil	5
1239	VASUDHARINI P	EEE	5
1240	RAMYA V	ICE	5
1241	BHUVANESHWARAN S	Prod	5
1242	KARTHIK RAJ K	EIE	6
1243	JAIYAH SHRUTHIY T	ICE	6
1244	SUGANYA M	ME CSE	6
1245	SURYA G	CSE	8
1246	PRIYANKA R	ICE	8
1247	YUVARAJ K	Mech	8

1248	AKSHTA S	EIE	9
1249	SUBHITCHA E	ICE	9
1250	SREE VIGNESH S	Mech	9
1251	VIJAY SHRI G	IT	9
1252	SATHYA MALA N	IT	10
1253	SHREERAMYA S	Civil	11
1254	VIGNESH L	Mech	11
1255	ABINAYA B	IT	11
1256	SEMMALAR K	CSE	12
1257	PARIMALA G	ECE	12
1258	SUKANYA R	EIE	12
1259	KREETHIKA G	IT	12
1260	SANJAY ARUN S	Mech	14
1261	PRIYADARSHINI J	IT	14
1262	APARNA DEVI S	EIE	15
1263	NAVEENKUMAR N	Mech	15
1264	AISWARYA V	Mech	15
1265	PREETHI A	MCA	15
1266	GURUPRIYA S	IT	17
1267	VINUTHA S	Civil	18
1268	NANDHINI S	CSE	18
1269	AISHWARYA R	EEE	18
1270	ILAKKIYAA R	ECE	18
1271	CHANDRIKA RAO	MCA	18
1272	SANGEETHA T	EIE	19
1273	PRAVEENA K	CSE	21
1274	RAKSANA BEGUM S	CSE	21
1275	JAYASHREE N	ECE	21
1276	BHUVANAPRIYA R	IT	21
1277	PAVITHRAA R	EEE	22
1278	MYTHILI V	ECE	23
1279	PRITHIVI T	Mech	23

1280	JEBISHA R T	MBA	23
1281	AARTHI K	MBA	23
1282	ABINAVA THARANI M B	Civil	24
1283	VIDHYA M	CSE	24
1284	MEENAKSHI R	ECE	24
1285	KARTHIKEYAN B	EIE	24
1286	ADITYA SIDDHARTH R	CSE	25
1287	SIVAPRIYA P	IT	25
1288	VELNIVEDHA C	Civil	26
1289	LAVANYA S	CSE	26
1290	GAYATHRI R	CSE	27
1291	SWATHI P	EIE	27
1292	SUHAIL AHMED N	Mech	27
1293	SRINIDHI V	ECE	28
1294	MONISHA M	Mech	28
1295	NANDINI M	CSE	29
1296	AISHWARYA R	CSE	29
1297	SRINITHI B	EEE	29
1298	SURYA PRAKASH D	MCA	29
1299	AKSHAYAA RAJESHWARI M	CSE	30
1300	MAHALAKSHMI E K	EEE	30
1301	JANANI SARADHA B	IT	30
1302	GAYATHRI V	CSE	32
1303	MOUNICA S K	CSE	32
1304	YUVARAJ R	EEE	32
1305	REVATHI G	EIE	32
1306	KARTHIKEYAN R	EIE	32
1307	KRUBHA SHREE C	Civil	34
1308	VASUNDHARA V	CSE	34
1309	VEENA S	EIE	34
1310	AJIT KUMAR S	Mech	34

1311	MONISHA P	MBA	34
1312	NITHYA R	Civil	35
1313	AJITH SELVAM S	Civil	35
1314	SOUNDARYA G	EEE	35
1315	AADHIRA SURESH	ECE	35
1316	SHINEY R	MCA	35
1317	PAVITHRA H	ECE	36
1318	HALIMA SANOFER A M	ECE	36
1319	THEIVAPRIYA V	ECE	36
1320	JANANI R	EIE	36
1321	ASWINI SUBHATRA M	Mech	36
1322	DIVYA LAKSHMI T	IT	36
1323	JAYASHREE R	MCA	36
1324	JYOTHI JAISWAL M	CSE	37
1325	SOWMIYA S	EIE	37
1326	GIRIDHARAN K	Mech	37
1327	MUTHUVEL M S	Mech	37
1328	KARTHICK S	IT	37
1329	GAYATHRI A	MBA	37
1330	SWATHI B	Civil	38
1331	PRIYA J	CSE	38
1332	CHEZHIAN T	Mech	38
1333	PRIYANKA M P	MBA	38
1334	MAMUTHA NISHA A	CSE	39
1335	SWATHY S	ECE	39
1336	PRIYANKA N J	EIE	39
1337	KOWTHAM RAJ K	Civil	40
1338	HARINI H	EIE	40
1339	GOWSALYA DEVI N	MCA	40
1340	LOGESH M	MBA	40
1341	KARTHIK A	EEE	41
1342	NANTHINISRI L	EIE	41

1343	GAYATHRI S	Civil	42
1344	SAPTHA MAALEEKAA S	CSE	42
1345	SINGARAVEL C	EEE	42
1346	NIVETHA C	EEE	42
1347	JAYA SUBHA DEVI J	Mech	43
1348	SRINATH N M	CSE	44
1349	NAVIS NIRMAL A	ECE	44
1350	ARAVINDASWAMY M	MCA	44
1351	AKSHAYA IYER G	CSE	45
1352	VIGNESH KUMAR G	EEE	45
1353	MATHANGI A	EIE	45
1354	JAYASHRI P	IT	45
1355	AMRUTHA SRIDHAR	CSE	46
1356	SRIDEVI A	EIE	46
1357	VANI R	EIE	46
1358	SANGEETHA K	EIE	46
1359	MANOJKUMAR M V	Mech	46
1360	PREMI M	ECE	47
1361	JANANI K (1997-02-03)	IT	47
1362	DAIVARANI A	MCA	47
1363	AMRUTHA B	CSE	48
1364	VIMUL NATH R	EIE	48
1365	AKSHAI R	CSE	49
1366	THIRUPURA SUNDARI K	EIE	49
1367	SRILEKHA V	ECE	50
1368	SRUTHI S	EIE	50
1369	VIBESHA P	EIE	50
1370	DHIVYA M	MCA	50

SAI RAM ENGINEERING COLLEGE

*has a long and distinguished academic record,
but its sights are set firmly on the future.*



INNOVATION & ENTREPRENEURSHIP DEVELOPMENT

Dr. APJ Abdul Kalam Innovation Ecosystems

is an initiative to encourage the spirit of innovation amongst the budding engineers of the country.

The Innovation Award is a National Level Project Competition for engineering students which will recognize and reward students for their ideas and innovation in science and technology across five domains...



Agriculture



Energy



Water &
Environment



Manufacturing &
Technology



Infrastructure

Cash Awards are Presented

MERIT SCHOLARSHIPS AND AWARDS BY THE BENEVOLENT MANAGEMENT

☞ Every year, more than ₹ 50,00,000/- is awarded as scholarship to the meritorious students of all the UG and PG courses of all the years. Details :

Merit Scholarship for II Year

- CGPA 9.500 & Above - Full Tuition Fees waiver
- CGPA 9.250 to 9.499 - ₹ 25,000/-
- CGPA 9.000 to 9.249 - ₹ 15,000/-
- CGPA 8.750 to 8.999 - ₹ 10,000/-
- CGPA 8.500 to 8.749 - ₹ 5,000/-

Merit Scholarship for III Year

- CGPA 9.250 & Above - Full Tuition Fees waiver
- CGPA 9.000 to 9.249 - ₹ 25,000/-
- CGPA 8.750 to 8.999 - ₹ 10,000/-
- CGPA 8.500 to 8.749 - ₹ 5,000/-

Merit Scholarship for IV Year

- CGPA 9.251 & Above - Full Tuition Fees waiver
- CGPA 9.001 to 9.250 - ₹ 10,000/-
- CGPA 8.760 to 9.000 - ₹ 5,000/-

☞ Gold Plaque to University Rank holders.

☞ Scholarships for the deserving but financially backward.

☞ Awards to consistent achievers in academics, cultural, sports and other competitions.

☞ Best out going student awards.

☞ Awards to students who excel in project works.

☞ Sponsorship for higher studies.

☞ Sponsorship for attending international conferences and workshops.

☞ Best Girl Student Award to girl students from all the branches of UG & PG.

☞ 50% fund for paper presentations in International Conference.

☞ Awards to teachers.

☞ Special cash awards and gifts to teachers for producing 100% results.

☞ Cash Awards for staff marriage and functions

☞ Special Cash Awards for the members of the staff of various departments for producing University Ranks.

TRANSPORT FACILITIES

GENERAL RULES

1. Strict discipline should be maintained within the premises of the institution. Indiscipline, misconduct, disobedience or any other irregularity will render a student liable for fine, suspension or immediate dismissal from the institution.
2. The lecturers and physical directors are authorised to check any misconduct of the students within

ROUTE NO. 1 to 12 TAMBARAM TO COLLEGE

T 03	TAMBARAM	:	08.20 a.m.
	SAIRAM CAMPUS	:	08.40 a.m.

ROUTE NO. 13 KRISHNA NAGAR - I TO COLLEGE

K 37	KRISHNA NAGAR (Mudichur)	:	08.00 a.m.
L 02	LAKSHMIPURAM SERVICE ROAD	:	08.08 a.m.
	SAIRAM CAMPUS	:	08.40 a.m.

ROUTE NO. 14 KONE KRISHNA TO COLLEGE

K 28	KONE KRISHNA	:	08.05 a.m.
	SAIRAM CAMPUS	:	08.40 a.m.

ROUTE NO. 15 RAJAKILPAKKAM TO COLLEGE

R 02	RAJAKILPAKKAM	:	07.35 a.m.
M 11	MAHALAKSHMI NAGAR	:	07.38 a.m.
C 02	CAMP ROAD	:	07.42 a.m.
S 11	SELAIYUR	:	07.44 a.m.
A 04	ADHI NAGAR	:	07.45 a.m.
C 19	CONVENT SCHOOL	:	07.49 a.m.
	SAIRAM CAMPUS	:	08.40 a.m.

ROUTE NO. 16 NGO COLONY TO COLLEGE

B 14	BRINTHAVANAM NAGAR	:	07.20 a.m.
K 06	KAKKAN BRIDGE	:	07.25 a.m.

B 12	BLUE BIKES (NGO COLONY)	:	07.28 a.m.
N 01	NGO COLONY	:	07.30 a.m.
M 72	MOUNT STATION	:	07.33 a.m.
H 10	HDFC BANK (ADAMBAKKAM)	:	07.35 a.m.
J 03	JAYALAKSHMI THEATRE (HERITAGE)	:	07.37 a.m.
T 03	TAMBARAM	:	08.15 a.m.
	SAIRAM CAMPUS	:	08.40 a.m.

ROUTE NO. 17 ADAMBAKKAM TO COLLEGE

G 03	GANESH TEMPLE	:	07.25 a.m.
A 03	ADAMBAKKAM (PS)	:	07.30 a.m.
J 03	JAYALAKSHMI THEATER (HERITAGE)	:	07.33 a.m.
T 02	T. G. NAGAR SUBWAY	:	07.35 a.m.
T 03	TAMBARAM	:	08.10 a.m.
	SAIRAM CAMPUS	:	08.40 a.m.

ROUTE NO. 18 THARAMANI RAILYWAY STATION TO COLLEGE

T 43	THARAMANI RAILWAY STATION	:	07.05 a.m.
K 50	KANTHANCHAVADI	:	07.10 a.m.
P 31	PERUNGUDI	:	07.15 a.m.
T 30	THORAIPAKKAM	:	07.17 a.m.
M 33	METTUKUPPAM	:	07.20 a.m.
P 01	P.T.C. QUATERS	:	07.23 a.m.
K 17	KARAPAKKAM	:	07.25 a.m.
S 17	SHOLINGANALLUR	:	07.30 a.m.
P 28	PERUMBAKKAM	:	07.35 a.m.
P 45	PUDHU NAGAR	:	07.38 a.m.
S 08	SANTHOSHPURAM	:	07.45 a.m.
S 12	SEMBAKKAM	:	07.48 a.m.
	SAI RAM CAMPUS	:	08.40 a.m.

ROUTE NO.19 NANGANALLUR TO COLLEGE

M 75	MUVARASANPATTU KULAM	:	07.40 a.m.
M 77	MUVARASANPATTU POLICE BOOTH	:	07.43 a.m.

M 76	MUVARASANPATTU PERIYAR SILAI	:	07.45 a.m.
J 09	J.K. MAHAL (Nanganallur)	:	07.48 a.m.
H 12	HINDU COLONY Ilird CROSS (Nanganallur)	:	07.50 a.m.
V 16	VELAN THEATRE	:	07.52 a.m.
P 18	PARK @ NANGANALLUR	:	07.55 a.m.
J 14	JAIGOPAL SCHOOL	:	07.56 a.m.
P 08	PALAVANTHANGAL SUBWAY	:	08.00 a.m.
	SAIRAM CAMPUS	:	08.40 a.m.

ROUTE NO.20 MADURANTHAKAM TO COLLEGE

M 39	MADURANTHAKAM B.S.	:	06.40 a.m.
C 28	CHENGALPET BYPASS	:	07.15 a.m.
J 12	J.S.P. HOSPITAL (Chengalpet)	:	07.20 a.m.
S 26	SRINIVASAPURAM	:	07.55 a.m.
	SAIRAM CAMPUS	:	08.40 a.m.

ROUTE NO. 21 ACHARAPAKKAM TO COLLEGE

A 36	ACHARAPAKKAM	:	06.45 a.m.
M 38	MELMARUVATHUR	:	06.50 a.m.
S 55	SOTHUPAKKAM	:	06.52 a.m.
S 56	SILAVATTAM	:	07.00 a.m.
I 10	IYYANAR KOIL (Madurantakam)	:	07.03 a.m.
K 63	KARUNGUZHI	:	07.05 a.m.
M 80	MELAVALAVAMPETTAI	:	07.10 a.m.
K 52	KALLAPERANPURAM	:	07.15 a.m.
P 79	PADALAM	:	07.20 a.m.
P 56	PUKATHURAI KOOT ROAD	:	07.23 a.m.
M 81	MAMANDUR	:	07.27 a.m.
	SAIRAM CAMPUS	:	08.40 a.m.

ROUTE NO. 22 KALPAKKAM TO COLLEGE

K 53	KALPAKKAM BUS STOP	:	06.20 a.m.
S 45	SADRAS (Kalpakkam)	:	06.30 a.m.
A 62	ANUPURAM (Kalpakkam)	:	06.40 a.m.

T 32	THIRUKAZHUKUNDRAM B.S.	:	07.00 a.m.
T 48	THIRUPORUR KOOT ROAD	:	07.20 a.m.
	SAIRAM CAMPUS	:	08.40 a.m.

ROUTE NO. 23 MADIPAKKAM-II TO COLLEGE

M 09	MADIPAKKAM (B.S.)	:	07.25 a.m.
P 36	PONNIYAMMAN KOIL	:	07.30 a.m.
I 14	IYAPPAN KOIL (MADIPAKKAM)	:	07.32 a.m.
M 08	MADIPAKKAM (AXIS BANK)	:	07.35 a.m.
K 23	KEELKATTALAI	:	07.40 a.m.
T 03	TAMBARAM	:	08.10 a.m.
	SAIRAM CAMPUS	:	08.40 a.m.

ROUTE NO. 24 MADIPAKKAM-I (VIA PALLAVARAM BYPASS) TO COLLEGE

R 06	RAM NAGAR	:	07.25 a.m.
S 02	SADHASIVA NAGAR	:	07.27 a.m.
B 03	BALAYA GARDEN (PETROL BUNK)	:	07.29 a.m.
P 36	PONNIAMMAN KOIL	:	07.32 a.m.
M 08	MADIPAKKAM (AXIS BANK)	:	07.35 a.m.
E 10	EACHANKADU (Keelkattalai)	:	07.45 a.m.
T 03	TAMBARAM	:	08.05 a.m.
	SAIRAM CAMPUS	:	08.40 a.m.

ROUTE NO. 26 CHINMAYA NAGAR TO COLLEGE

C 09	CHINMAYA NAGAR B.S.	:	07.25 a.m.
S 03	SAI NAGAR (VADAPALANI)	:	07.30 a.m.
N 05	NATESAN NAGAR	:	07.32 a.m.
E 03	ELANGO NAGAR	:	07.35 a.m.
A 02	AAVICHU SCHOOL	:	07.37 a.m.
V 03	VADAPALANI BUS STAND	:	07.38 a.m.
V 04	VADAPALANI SIVAN KOIL	:	07.39 a.m.
K 19	KASI THEATRE	:	07.45 a.m.
E 11	EKKADUTHANGAL	:	07.55 a.m.
T 03	TAMBARAM	:	08.05 a.m.
	SAIRAM CAMPUS	:	08.40 a.m.

ROUTE NO.27 MANDAVELI TO COLLEGE

M 15	MANDAVELI (DEPOT)	:	07.15 a.m.
R 03	RAJA ANNAMALAIPURAM	:	07.17 a.m.
K 07	KALIAPPA HOSPITAL (Billroth)	:	07.19 a.m.
A 05	ADYAR GATE HOTEL	:	07.23 a.m.
K 32	KOTTURPURAM	:	07.28 a.m.
A 20	ANNA UNIVERSITY	:	07.30 a.m.
G 16	GUINDY SUBWAY	:	07.32 a.m.
T 03	TAMBARAM	:	08.05 a.m.
	SAIRAM CAMPUS	:	08.40 a.m.

ROUTE NO.28 T. NAGAR TO COLLEGE

P 41	POSTAL COLONY (B.S.)	:	07.05 a.m.
T 10	THAMBIAH REDDY ROAD	:	07.07 a.m.
P 16	PANAGAL PARK	:	07.15 a.m.
V 01	V.N.ROAD	:	07.17 a.m.
T 03	TAMBARAM	:	08.05 a.m.
	SAIRAM CAMPUS	:	08.40 a.m.

ROUTE NO.29 INJAMBAKKAM TO COLLEGE

I 19	INJAMBAKKAM	:	07.00 a.m.
V 24	VETTUVANKANE	:	07.05 a.m.
N 11	NEELANKARAI	:	07.07 a.m.
P 06	PALAVAKKAM	:	07.10 a.m.
V 02	VAALMEEKI NAGAR	:	07.25 a.m.
M17	MARUTHEESHWARAR TEMPLE	:	07.27 a.m.
T 21	THIRUVANMIYUR SOUTH AVENUE	:	07.29 a.m.
M 07	MADHYA KAILASH	:	07.40 a.m.
T 03	TAMBARAM	:	08.05 a.m.
	SAIRAM CAMPUS	:	08.40 a.m.

ROUTE NO. 30 VELACHERY (CHECKPOST) TO COLLEGE

V 14	VELACHERY (CHECKPOST)	:	07.05 a.m.
V 53	VELACHERY ERIKARAI	:	07.10 a.m.

V 54	VELACHERY GRT	:	07.12 a.m.
V 55	VELACHERY WATER TANK	:	07.15 a.m.
V 20	VIJAYA NAGAR (B.S.)	:	07.20 a.m.
T 03	TAMBARAM	:	08.05 a.m.
	SAIRAM CAMPUS	:	08.40 a.m.

ROUTE NO. 31 CHROMPET - IV TO COLLEGE

C 13	CHROMPET (B.S.)	:	08.07 a.m.
R 08	RAMAR KOIL SANATORIUM	:	08.10 a.m.
T 03	TAMBARAM	:	08.15 a.m.
	SAIRAM CAMPUS	:	08.40 a.m.

ROUTE NO. 32 VIRUGAMBAKKAM TO COLLEGE

V 21	VIRUGAMBAKKAM (CHURCH)	:	07.20 a.m.
A 09	ALWAR THIRUNAGAR (B.S.)	:	07.23 a.m.
K 25	KESAVARTHANI (B.S.)	:	07.25 a.m.
V 06	VALASARAVAKKAM MARKET	:	07.29 a.m.
M 22	METRO NAGAR - Valasaravakkam	:	07.30 a.m.
G 02	GANESH NAGAR - Valasaravakkam	:	07.37 a.m.
	SAIRAM CAMPUS	:	08.40 a.m.

ROUTE NO.33 KALLIKUPPAM (AVADI) TO COLLEGE

K 49	KALLIKUPPAM (AVADI)	:	07.00 a.m.
P 48	PUTHUR	:	07.10 a.m.
O 06	ORAKADAM (AVADI)	:	07.15 a.m.
S 30	SINGAPORE COMPLEX (AVADI)	:	07.17 a.m.
S 41	STEDFORD HOSPITAL (Ambattur)	:	07.20 a.m.
A 34	AVADI CHECK POST	:	07.35 a.m.
P 91	PATTABHIRAM GANDHI NAGAR	:	07.50 a.m.
	SAIRAM CAMPUS	:	08.40 a.m.

ROUTE NO. 34 THALAKUPPAM (THIRUVOTTIYUR) TO COLLEGE

T 42	THALAKUPPAM (Thiruvottiyur)	:	06.10 a.m.
W 07	WATER TANK (Thalakuppam)	:	06.15 a.m.

E 13	E.B. CAMP B.S. (Thalakuppam)	:	06.20 a.m.
B 18	BURMA NAGAR (Thalakuppam)	:	06.25 a.m.
E 06	ERNAVOUR	:	06.35 a.m.
V 41	VIMCO NAGAR	:	06.38 a.m.
A 30	AZAX (THIRUVOTTIYUR)	:	06.40 a.m.
P 25	PERIYAR NAGAR (Thiruvottiyur)	:	06.43 a.m.
T 24	THIRUVOTTIYUR (B.S.)	:	06.45 a.m.
T 07	THERADI (Thiruvottiyur)	:	06.47 a.m.
L 01	L.M. KOVIL (THIRUVOTTIYUR)	:	06.50 a.m.
	SAIRAM CAMPUS	:	08.40 a.m.

ROUTE NO. 36 NESAPAKKAM TO COLLEGE

P 34	PONDICHERY GUEST HOUSE	:	07.15 a.m.
N 08	NESAPAKKAM (B.S.)	:	07.20 a.m.
M 01	M.G.R. NAGAR (B.S.)	:	07.23 a.m.
K 02	K.K.NAGAR (ROUNTANNA)	:	07.25 a.m.
A 37	AJANTHA BUS STOP	:	07.35 a.m.
D 06	DATA UDIPI HOTEL	:	07.37 a.m.
T 03	TAMBARAM	:	08.05 a.m.
	SAIRAM CAMPUS	:	08.40 a.m.

ROUTE NO. 37 DOVETON TO COLLEGE

P 75	PATTALAM	:	06.45 a.m.
D 08	DOVETON CAFÉ	:	06.50 a.m.
P 66	PURASAWAKKAM TANK	:	07.00 a.m.
K 65	KELLYS	:	07.10 a.m.
K 92	KILPAUK MUMMY DADDY	:	07.12 a.m.
K 66	KILPAUK GARDEN BUS STOP	:	07.15 a.m.
N 28	NEW AVADI ROAD ANTONS SHOP	:	07.18 a.m.
N 29	NEW AVADI ROAD (Life Line Hospital)	:	07.20 a.m.
P 92	PACHAYAPPAS COLLEGE	:	07.22 a.m.
A 68	AMINJIKARAI HOT CHIPS	:	07.23 a.m.
M 57	MADURAVOYAL BY-PASS	:	07.30 a.m.
	SAIRAM CAMPUS	:	08.40 a.m.

ROUTE NO. 38 GOLDEN FLATS TO COLLEGE

P 61	PARK ROAD (GOLDEN FLATS)	:	07.00 a.m.
W 06	WAVES SIGNAL	:	07.02 a.m.
G 23	GOLDERN FLATS	:	07.05 a.m.
P 73	PANNEER NAGAR	:	07.07 a.m.
C 27	CHURCH (GOLDEN FLATS)	:	07.10 a.m.
A 60	AMBEDKAR GROUND	:	07.12 a.m.
V 35	VELAMMAL SCHOOL	:	07.14 a.m.
A 63	AXIS BANK (J.J.NAGAR)	:	07.16 a.m.
	SAIRAM CAMPUS	:	08.40 a.m.

ROUTE NO. 39 PAMMAL TO COLLEGE

S 35	SANKAR NAGAR (PAMMAL)	:	07.40 a.m.
P 14	PAMMAL RETTAI PILLAIYAR KOIL	:	07.45 a.m.
A 38	ANAGAPUTHUR SCHOOL	:	07.50 a.m.
A 39	AMMAN KOIL (ANAGAPUTHUR)	:	07.52 a.m.
A14	ANAGAPUTHUR B.S.	:	07.55 a.m.
M 78	METRO CITY (KUNDRATHUR)	:	08.00 a.m.
A 43	ANDAL KUPPAM (PAMMAL)	:	08.05 a.m.
	SAIRAM CAMPUS	:	08.40 a.m.

ROUTE NO. 40 LIGHT HOUSE TO COLLEGE

L 04	LIGHT HOUSE (MARINA)	:	07.10 a.m.
G 09	GOSHA HOSPITAL	:	07.13 a.m.
R 10	RATNA CAFÉ	:	07.14 a.m.
T 26	TRIPPLICANE HIGH ROAD	:	07.15 a.m.
I 01	ICE HOUSE	:	07.16 a.m.
T 03	TAMBARAM	:	08.05 a.m.
	SAIRAM CAMPUS	:	08.40 a.m.

ROUTE NO. 41, 42, 43 CHROMPET TO COLLEGE

C 13	CHROMPET	:	08.05 a.m.
T 03	TAMBARAM	:	08.20 a.m.
	SAIRAM CAMPUS	:	08.40 a.m.

ROUTE NO. 44 METTUPALAYAM - I TO COLLEGE

G 10	GOVINDAN ROAD	:	07.10 a.m.
S 25	SRINIVASA THEATRE	:	07.13 a.m.
K 22	KAVERY NAGAR	:	07.16 a.m.
C 01	C.I.T. NAGAR	:	07.20 a.m.
T 13	TODHUNTER NAGAR	:	07.30 a.m.
P 15	PANAGAL MALIGAI	:	07.33 a.m.
C 10	CHINNAMALAI	:	07.35 a.m.
T 03	TAMBARAM	:	08.05 a.m.
	SAIRAM CAMPUS	:	08.40 a.m.

ROUTE NO : 45 GUDUVANCHERY TO COLLEGE

G 13	GUDUVANCHERY (B.S.)	:	07.55 a.m.
U 01	URAPAKKAM (B.S.)	:	08.00 a.m.
U 02	URAPAKKAM (SCHOOL STOP)	:	08.05 a.m.
	SAIRAM CAMPUS	:	08.40 a.m.

ROUTE NO. 46 ANNA ARCH TO COLLEGE

A 40	13TH AVENUE (ANNA ARCH)	:	06.45 a.m.
A 41	2ND AVENUE (ANNA ARCH)	:	07.00 a.m.
B 09	BLUE STAR HI-STYLE (ANNA ARCH)	:	07.02 a.m.
S 09	SARAVANA BHAVAN HOTEL (ANNA ARCH)	:	07.05 a.m.
I 15	IYYPPAN KOIL (ANNA ARCH)	:	07.07 a.m.
A 18	ANNA NAGAR (ROUNTANA)	:	07.08 a.m.
S 36	SANTHI COLONY	:	07.10 a.m.
A 16	ANNA ARCH (B.S)	:	07.13 a.m.
N 13	NSK NAGAR	:	07.15 a.m.
P 57	PANCHALI AMMAN KOIL	:	07.17 a.m.
V 28	VIJAYA BANK (ANNA ARCH)	:	07.19 a.m.
A 42	ARUMBAKKAM B.S.	:	07.20 a.m.
N 15	NERKUNDRAM MOSQUE	:	07.27 a.m.
M 55	MADURAVOYAL ERIKKARAI	:	07.29 a.m.
V 34	VANAGARAM	:	07.32 a.m.
	SAIRAM CAMPUS	:	08.40 a.m.

ROUTE NO.47 KEELKATTALAI - I TO COLLEGE

B 04	BATHALA VIGNESHWARA KOIL	:	07.35 a.m.
M 10	MADIPAKKAM KUTT ROAD	:	07.38 a.m.
G 17	GANESH NAGAR (KEELKATTALAI)	:	07.40 a.m.
K 23	KEELKATTALAI	:	07.43 a.m.
T 03	TAMBARAM	:	08.05 a.m.
	SAIRAM CAMPUS	:	08.40 a.m.

ROUTE NO. 48 KOLATHUR TO COLLEGE

A 53	AGARAM MURUGAR KOIL (Periyar Nagar)	:	06.50 a.m.
T 46	THIRUVALLUVAR MANDAPAM	:	06.52 a.m.
P 80	PERIYAR NAGAR MARKET	:	06.53 a.m.
M 66	M.G.R. SILAI (Retteri)	:	06.55 a.m.
W 08	WELDING SHOP (Retteri)	:	06.57 a.m.
K 68	KOLATHUR	:	07.00 a.m.
K 80	KOLATHUR MOHAMBIGAI KOIL	:	07.02 a.m.
	SAIRAM CAMPUS	:	08.40 a.m.

ROUTE NO.49 SAMIYAR MADAM (FIVE LIGHTS) TO COLLEGE

S 05	SAMIYAR MADAM	:	07.15 a.m.
F 01	FIVE LIGHTS	:	07.20 a.m.
A 29	AYODYA MANDAPAM	:	07.25 a.m.
P 41	POSTAL COLONY (B.S.)	:	07.28 a.m.
B 10	BLUE TANK (West Mambalam)	:	07.29 a.m.
E 11	EKKATTUTHANGAL	:	07.30 a.m.
O 07	OLYMPIA	:	07.32 a.m.
M 20	MEENAMBAKKAM (Near to Join College)	:	07.40 a.m.
T 03	TAMBARAM	:	08.15 a.m.
	SAIRAM CAMPUS	:	08.40 a.m.

ROUTE NO. 50 PALAVAKKAM TO COLLEGE

P 81	PERIYAR SIGNAL (Palavakkam)	:	07.15 a.m.
K 31	KOTTIVAKKAM	:	07.20 a.m.
T 20	THIRUVANMIYUR R.T.O.	:	07.25 a.m.
T 49	THIRUVANMIYUR (B.S.)	:	07.30 a.m.

T 50	THARAMANI	:	07.35 a.m.
T 51	THARAMANI PILLAIYAR KOIL	:	07.38 a.m.
B 17	BABY NAGAR	:	07.40 a.m.
V 20	VIJAYA NAGAR (B.S.)	:	07.45 a.m.
T 03	TAMBARAM	:	08.05 a.m.
	SAIRAM CAMPUS	:	08.40 a.m.

ROUTE NO. 51 BALAJI NAGAR TO COLLEGE

K 04	K.V. II (Balaji Nagar)	:	07.20 a.m.
H 01	HANSA GARDEN	:	07.22 a.m.
S 27	SUDARSHAN NAGAR (CAMP ROAD)	:	07.23 a.m.
A 17	ANNA NAGAR (MADAMPAKKAM)	:	07.25 a.m.
K 36	KOZHIPPANNAI (MADAMPAKKAM)	:	07.26 a.m.
A 01	A.L.S NAGAR	:	07.28 a.m.
Y 01	YESHWANTH NAGAR	:	07.30 a.m.
P 05	PADMAVATHI NAGAR	:	07.31 a.m.
B 07	BHARATH ENGG.COLLEGE	:	07.32 a.m.
I 07	INDRA NAGAR Camp Road	:	07.33 a.m.
E 07	EX-SERVICEMEN ENCLAVE	:	07.35 a.m.
A 12	AMBETHKAR NAGAR (CAMP ROAD)	:	07.37 a.m.
	SAIRAM CAMPUS	:	08.40 a.m.

ROUTE NO. 52 INDIRA NAGAR TO COLLEGE

I 06	INDIRA NAGAR WATER TANK	:	07.10 a.m.
T 05	TANISHQ JEWELLERY(M.G. ROAD)	:	07.13 a.m.
V 11	VANNANDURAI (ANNAI TOWERS)	:	07.15 a.m.
B 06	BESANT NAGAR (OPP.MAHARAJA STORES)	:	07.18 a.m.
D 01	DAMODARAPURAM	:	07.20 a.m.
A 06	ADYAR TELEPHONE EXCH.	:	07.22 a.m.
R 09	RAMKAY TVS (ADYAR SIGNAL)	:	07.25 a.m.
G 06	GODREJ (SARADA AGENCY)	:	07.27 a.m.
K 42	KUN HYUNDAI	:	07.28 a.m.
I 03	IIT (IN GATE)	:	07.32 a.m.
A 08	ALANDUR (SUBWAY)	:	07.38 a.m.

T 03 TAMBARAM : 08.05 a.m.
SAIRAM CAMPUS : 08.40 a.m.

ROUTE NO. 53 AGARAM THEN TO COLLEGE

A 31 AGARAM THEN : 07.25 a.m.
P 82 PADUVANCHERI : 07.30 a.m.
K 84 KASPAPURAM : 07.35 a.m.
M 36 MAPPEDU (AGARAM) : 07.40 a.m.
I 07 INDIRA NAGAR (CAMP ROAD) : 07.47 a.m.
C 20 CHRISTIAN COLLEGE : 07.50 a.m.
T 03 TAMBARAM : 08.10 a.m.
SAIRAM CAMPUS : 08.40 a.m.

ROUTE NO. 54 BHARATHI NAGAR TO COLLEGE

B 08 BHARATHI NAGAR (MUDICHUR ROAD) : 08.05 a.m.
V 22 VETRI NAGAR (MUDICHUR ROAD) : 08.10 a.m.
SAIRAM CAMPUS : 08.40 a.m.

ROUTE NO. 55 CHENGALPET TO COLLEGE

C 03 CHENGALPET SAKTHI NAGAR : 07.10 a.m.
V 45 VALLAM - CGL : 07.15 a.m.
R 22 RATTINANKINARU : 07.20 a.m.
G 26 GANESH BHAVAN (CGL) : 07.25 a.m.
N 09 NEW BUS STAND (CHENGALPET) : 07.27 a.m.
C 26 CHENGALPET OLD BUS STAND : 07.30 a.m.
M 68 MAHINDRA CITY : 07.35 a.m.
G 13 GUDUVANCHERY (B.S.) : 07.50 a.m.
SAIRAM CAMPUS : 08.40 a.m.

ROUTE NO. 56 CHENGALPET ITI TO COLLEGE

I 13 ITI (CHENGALPET) : 07.00 a.m.
V 44 VENPAKKAM - CGL : 07.05 a.m.
C 07 CHENGALPET (G.H.) : 07.10 a.m.
R 22 RATTINAKINARU : 07.12 a.m.

G 26	GANESH BHAVAN (CHENGALPET)	:	07.13 a.m.
T 44	THIRUMALAI THEATRE (CHENGALPET)	:	07.14 a.m.
J 12	JSP HOSPITAL	:	07.15 a.m.
N 09	NEW BUS STAND (CGL)	:	07.17 a.m.
C 26	CHENGALPET OLD BUS STAND	:	07.20 a.m.
M 68	MAHINDRA CITY	:	07.25 a.m.
	SAIRAM CAMPUS	:	08.40 a.m.

ROUTE NO.57 THIRUVOTTIYUR TO COLLEGE

L 01	L. M. KOIL (Thiruvottiyur)	:	06.40 a.m.
S 15	SHANMUGAM PARK	:	06.43 a.m.
R 33	RAJA KADAI	:	06.45 a.m.
T 12	THANGAL (Thiruvottiyur)	:	06.47 a.m.
T 25	TOLGATE	:	06.50 a.m.
K 20	KASIMEDU	:	06.55 a.m.
K 09	KALMANDAPAM	:	07.00 a.m.
R 18	ROYAPURAM MARKET	:	07.02 a.m.
C 16	CLIVE BATTERY	:	07.03 a.m.
B 05	BEACH STATION	:	07.04 a.m.
P 20	PARRIS	:	07.05 a.m.
	SAIRAM CAMPUS	:	08.40 a.m.

ROUTE NO.58 MARAIMALAI NAGAR TO COLLEGE

M 03	MARAIMALAI NAGAR BUS STAND	:	07.30 a.m.
K 21	KATTANGULATHUR	:	07.35 a.m.
S 34	S.R.M. COLLEGE	:	07.37 a.m.
G 13	GUDUVANCHERY (B.S.)	:	07.45 a.m.
	SAIRAM CAMPUS	:	08.40 a.m.

ROUTE NO.59 PALLIKARANAI TO COLLEGE

J 05	JERUSALAM COLLEGE	:	07.25 a.m.
N 04	NARAYANAPURAM	:	07.28 a.m.
P 12	PALLIKARANAI GANESH NAGAR	:	07.30 a.m.
P 11	PALLIKARANAI (B.S.)	:	07.33 a.m.

O 01	OIL COMPANY (PALLIKARNAI)	:	07.35 a.m.
P 83	PALLIKARANAI HIGH SCHOOL	:	07.40 a.m.
J 15	JEYACHANDRAN TEXTILES (MEDAVAKKAM)	:	07.43 a.m.
M 19	MEDAVAKKAM (B.S.)	:	07.45 a.m.
V 25	VIJAYA NAGARAM (MEDAVAKKAM)	:	07.50 a.m.
T 03	TAMBARAM	:	08.05 a.m.
	SAIRAM CAMPUS	:	08.40 a.m.

ROUTE NO.60 PORUR TO COLLEGE

P 38	PORUR	:	07.20 a.m.
P 93	PORUR POLICE BOOTH	:	07.21 a.m.
S 16	SHELL BUNK (PORUR)	:	07.22 a.m.
M 30	MUGALIVAKKAM (S & S COMPANY)	:	07.24 a.m.
M 27	MOON LIGHT	:	07.25 a.m.
M 13	MANAPAKKAM	:	07.28 a.m.
N 27	NANDAMBAKKAM	:	07.30 a.m.
P 94	PORUR SANGEETHA HOTEL	:	07.32 a.m.
B 11	BUTT ROAD	:	07.35 a.m.
G 15	GUINDY (AZARKHANA)	:	07.40 a.m.
	SAIRAM CAMPUS	:	08.40 a.m.

ROUTE NO.61 KODUNGAIYUR TO COLLEGE

A 59	AMBEDKAR COLLEGE	:	06.25 a.m.
K 67	KODUNGAIYUR MKB NAGAR	:	06.35 a.m.
M 73	MULLAI NAGAR (Kodungaiyur)	:	06.40 a.m.
K 64	KANNADASAN NAGAR	:	06.42 a.m.
K 93	KODUNGAIYUR MUTHAMIZH NAGAR	:	06.45 a.m.
S 60	SIDCO COLONY	:	06.47 a.m.
M 53	M. R. NAGAR	:	06.50 a.m.
E 12	ERUKANCHERRY	:	07.00 a.m.
	SAIRAM CAMPUS	:	08.40 a.m.

ROUTE NO.62 LIBERTY - II TO COLLEGE

K 75	KODAMBAKKAM	:	07.20 a.m.
L 03	LIBERTY	:	07.22 a.m.
V 38	VASANTHA BHVAN (Kodambakkam)	:	07.23 a.m.
P 43	POWER HOUSE	:	07.25 a.m.
S 05	SAMIYAR MADAM	:	07.26 a.m.
A 25	ASHOK PILLAR	:	07.27 a.m.
T 03	TAMBARAM	:	08.20 a.m.
	SAIRAM CAMPUS	:	08.40 a.m.

ROUTE NO.63 KORATTUR TO COLLEGE

K 69	KORATTUR	:	07.00 a.m.
L 10	LUCAS TVS	:	07.05 a.m.
W05	WHEELS INDIA (KORATTUR)	:	07.06 a.m.
T 39	THIRUMANGALAM	:	07.10 a.m.
C 24	CPW QUARTERS	:	07.15 a.m.
K 70	KOYAMBEDU SIGNAL	:	07.18 a.m.
R 28	ROHINI THEATRE (KOYAMBEDU)	:	07.20 a.m.
N 21	NERKUNDRAM	:	07.22 a.m.
M 54	MADURAVOYAL	:	07.27 a.m.
M 67	MADURAVOYAL MURUGAN KOIL ARCH	:	07.29 a.m.
M 56	MADURAVOYAL MARKET	:	07.30 a.m.
M 57	MADURAVOYAL BYPASS	:	07.35 a.m.
	SAIRAM CAMPUS	:	08.40 a.m.

ROUTE NO.64 PERUNGALATHUR TO COLLEGE

P 30	PERUNGALATHUR GST ROAD	:	08.10 a.m.
E 05	ERIKARAI PERUNGALATHUR	:	08.15 a.m.
	SAIRAM CAMPUS	:	08.40 a.m.

ROUTE NO.65 IRUMBULIYUR TO COLLEGE

V 09	VANDALUR GATE	:	08.00 a.m.
E 04	ERANIYAMMAN KOIL	:	08.03 a.m.
E 05	ERIKARAI (Perungalathur)	:	08.05 a.m.
I 09	IRUMBULIYUR (B.S)	:	08.10 a.m.
	SAIRAM CAMPUS	:	08.40 a.m.

ROUTE NO.66 VYASARPADI TO COLLEGE

V 43	VYASARPADI	:	06.50 a.m.
J 08	JEEVA STATION	:	06.52 a.m.
G 25	GANESAPURAM	:	06.54 a.m.
A 52	ATTU THOTTY	:	06.56 a.m.
O 08	OTTERI	:	07.02 a.m.
T 37	T.B. HOSPITAL (AYNAVARAM)	:	07.04 a.m.
N 22	NOOR HOTEL (AYNAVARAM)	:	07.06 a.m.
J 06	JOINT OFFICE	:	07.10 a.m.
R 32	RAILWAY QUARTERS (ICF)	:	07.20 a.m.
I 02	ICF	:	07.25 a.m.
V 40	VILLIVAKKAM	:	07.30 a.m.
R 28	ROHINI THEATRE (Koyambedu)	:	07.40 a.m.
V 52	VANAGARAM TOLLGATE	:	07.50 a.m.
	SAIRAM CAMPUS	:	08.40 a.m.

ROUTE NO. 67 HASTHINAPURAM-I TO COLLEGE

H 02	HASTHINAPURAM	:	07.51 a.m.
G 04	GAYATHRI NAGAR WATER TANK	:	07.52 a.m.
A 13	AMMAN KOVIL (HASTHINAPURAM)	:	07.53 a.m.
K 41	KUMARAN KUNDRAM	:	07.55 a.m.
R 13	ROJA DEPARTMENTAL STORE -NEHRU NGR	:	07.58 a.m.
N 06	NEAR BRIDGE (MIET)	:	08.00 a.m.
T 03	TAMBARAM	:	08.10 a.m.
	SAIRAM CAMPUS	:	08.40 a.m.

ROUTE NO.68 KANCHEEPURAM - II TO COLLEGE

K 54	KANCHEEPURAM BUS STAND	:	06.50 a.m.
K 12	KANCHEEPURAM MOONGIL MANDABAM	:	06.53 a.m.
K 57	KANCHEEPURAM RANGASAMI KULAM	:	06.58 a.m.
K 13	KANCHEEPURAM PERMUAL KOIL	:	07.03 a.m.
K 58	KANCHEEPURAM TOLLGATE	:	07.10 a.m.
S 54	SASTHRI NAGAR (KPM)	:	07.13 a.m.
K 59	KANCHEEPURAM PERIYAR NAGAR	:	07.16 a.m.
K 81	KANCHEEPURAM PACHAIPPAS COLLEGE	:	07.18 a.m.
K 73	KANCHEEPURAM KANNIGAPURAM	:	07.20 a.m.
E 02	EKANAMPET (KANCHEEPURAM)	:	07.25 a.m.
R 05	RAJAMPETTAI	:	07.28 a.m.
	SAIRAM CAMPUS	:	08.40 a.m.

ROUTE NO. 69 VANUVAMPET TO COLLEGE

V 13	VANUVAMPET (CHURCH)	:	07.32 a.m.
S 57	SARAVANA HOTEL (NANGANALLUR)	:	07.34 a.m.
C 08	CHIDAMBARAM STORE (NANGANALLUR)	:	07.35 a.m.
R 14	ROJA MEDICAL	:	07.37 a.m.
P 08	PALAVANTHANGAL SUBWAY	:	07.40 a.m.
	SAIRAM CAMPUS	:	08.40 a.m.

ROUTE NO. 70 HASTHINAPURAM-II TO COLLEGE

H 02	HASTHINAPURAM	:	08.00 a.m.
T 06	TB HOSPITAL SANATORIAM	:	08.05 a.m.
M 21	MEPZ	:	08.07 a.m.
T 03	TAMBARAM	:	08.20 a.m.
	SAIRAM CAMPUS	:	08.40 a.m.

ROUTE NO. 71 WALLTAX ROAD TO COLLEGE

W 03	WALLTAX ROAD	:	07.00 a.m.
E 09	ELEPHANT GATE	:	07.04 a.m.
C 05	CENTRAL STATION	:	07.05 a.m.
E 14	EVEREST HOTEL (EGMORE)	:	07.10 a.m.

E 01	EGMORE	:	07.15 a.m.
J 13	JUSTICE QUARTERS	:	07.17 a.m.
E 08	EYE HOSPITAL (EGMORE)	:	07.20 a.m.
K 16	KANNIMARA	:	07.22 a.m.
V 37	VANAVIL	:	07.30 a.m.
T 08	TEYNAMPET	:	07.32 a.m.
S 19	SIET	:	07.35 a.m.
S 04	SAIDAPET	:	07.40 a.m.
	SAIRAM CAMPUS	:	08.40 a.m.

ROUTE NO. 72 ZAM BAZAAR TO COLLEGE

Z 01	ZAM BAZAAR	:	07.05 a.m.
A 33	AMEER MAHAL	:	07.07 a.m.
R 15	ROYAPETTAH HOSPITAL	:	07.08 a.m.
R 16	ROYAPETTAH POLICE STATION	:	07.10 a.m.
A 07	AJANTHA HOTEL	:	07.12 a.m.
S 31	SANTHOME	:	07.15 a.m.
I 08	I.O.B. STOP - MYLAPORE	:	07.17 a.m.
S 32	SANGEETHA HOTEL - SANTHOME	:	07.20 a.m.
M 35	M.R.C. MILK BOOTH	:	07.25 a.m.
M 48	M.R.C. NAGAR	:	07.27 a.m.
R 35	RANI MEYAMMAI SCHOOL (MANDAVELI)	:	07.30 a.m.
S 33	SATHYA STUDIO	:	07.32 a.m.
T 03	TAMBARAM	:	08.10 a.m.
	SAIRAM CAMPUS	:	08.40 a.m.

ROUTE NO. 73 MUDICHUR TO COLLEGE

P 29	PERUNGALATHUR - OLD	:	08.04 a.m.
P 04	PADMAVATHY KALYANA MANDAPAM	:	08.05 a.m.
B 08	BHARATHI NAGAR (MUDICHUR ROAD)	:	08.06 a.m.
	SAIRAM CAMPUS	:	08.40 a.m.

ROUTE NO. 74 KOYEMBEDU TO COLLEGE

V 39	VIJAYAKANTH MANDAPAM	:	07.10 a.m.
C 17	CMBT	:	07.15 a.m.
M 25	MMDA	:	07.17 a.m.
T 14	THIRU NAGAR	:	07.20 a.m.
O 05	OPP. TO SRM (VADAPALANI)	:	07.22 a.m.
S 14	SENTHIL TOWERS (ASHOK NGR)	:	07.28 a.m.
A 23	ASHOK NAGAR - Canara Bank	:	07.30 a.m.
	SAIRAM CAMPUS	:	08.40 a.m.

ROUTE NO. 75 K.K.NAGAR TO COLLEGE

K 03	K.K.NAGAR AAVIN BOOTH (Near Saravana Bhavan)	:	07.20 a.m.
S 23	SIVAN PARK	:	07.22 a.m.
C 14	CHURCH (Kamarajar Salai)	:	07.24 a.m.
V 17	VELANKANNI SCHOOL (KK NGR)	:	07.25 a.m.
A 10	AMBAL NAGAR	:	07.30 a.m.
T 03	TAMBARAM	:	08.10 a.m.
	SAIRAM CAMPUS	:	08.40 a.m.

ROUTE NO. 76 AIRPORT TO COLLEGE

A 54	AIRPORT	:	08.00 a.m.
P 09	PALLAVARAM	:	08.05 a.m.
P 10	PALLAVARAM SIGNAL	:	08.08 a.m.
T 03	TAMBARAM	:	08.20 a.m.
	SAIRAM CAMPUS	:	08.40 a.m.

ROUTE NO. 77 LIBERTY - I TO COLLEGE

N 07	NELSON MANICKAM ROAD	:	06.50 a.m.
M 18	METHA NAGAR	:	06.55 a.m.
C 12	CHOOAIMEDU	:	07.00 a.m.
S 28	STERLING ROAD	:	07.02 a.m.
L 08	LOYOLA COLLEGE	:	07.04 a.m.
V 07	VALLUVARKOTTAM	:	07.08 a.m.
P 27	PERIYAR ROAD	:	07.10 a.m.

P 43	POWER HOUSE	:	07.15 a.m.
T 03	TAMBARAM	:	07.55 a.m.
	SAIRAM CAMPUS	:	08.40 a.m.

ROUTE NO. 78 ANAKAPUTHUR via PALLAVARAM TO COLLEGE

A 14	ANAKAPUTHUR B.S.	:	07.40 a.m.
A 39	AMMAN KOIL (ANAKAPUTHUR)	:	07.42 a.m.
A 38	ANAKAPUTHUR SCHOOL STOP	:	07.44 a.m.
A 11	ARUNMATHI THEATRE	:	07.46 a.m.
I 12	INDIAN BANK (PAMMAL)	:	07.48 a.m.
K 38	KRISHNA NGR (PAMMAL)	:	08.00 a.m.
M 32	MUTHAMIZH NAGAR	:	08.02 a.m.
A 45	ATTU THOTTY (PALLAVARAM)	:	08.05 a.m.
	SAIRAM CAMPUS	:	08.40 a.m.

ROUTE NO. 79 THIRUVALLUR TO COLLEGE

T 19	THIRUVALLUR B.S.	:	06.50 a.m.
P 78	POST OFFICE (Thiruvallur)	:	07.00 a.m.
T 52	THIRUVALLUR OIL MILL	:	07.02 a.m.
O 04	ONDIKUPPAM	:	07.05 a.m.
A 21	ARANVAYAL	:	07.08 a.m.
M 14	MANAVALA NAGAR	:	07.10 a.m.
V 18	VELLA VEDU	:	07.25 a.m.
T 17	THIRUMAZHISAI	:	07.30 a.m.
N 26	NAZARATHPET	:	07.35 a.m.
	SAIRAM CAMPUS	:	08.40 a.m.

ROUTE NO.80 MADHAVARAM MILK COLONY TO COLLEGE

M 44	MADHAVARAM MMC	:	06.20 a.m.
M 45	MADHAVARAM MAIN GATE	:	06.22 a.m.
A 44	ARUL NAGAR	:	06.25 a.m.
T 33	THAPAL PETTI (MADHAVARAM)	:	06.30 a.m.
P 67	PERAMBUR	:	06.40 a.m.
P 65	PERAMBUR MARKET	:	06.42 a.m.

B 13	B. B. ROAD (PERAMBUR)	:	06.44 a.m.
P 63	PERAMBUR RAILWAY STATION	:	06.46 a.m.
P 62	PERAMBUR CHURCH	:	06.48 a.m.
G 22	GANDHI SALAI PERAMBUR	:	06.50 a.m.
P 64	PERAMBUR VENUS	:	06.52 a.m.
	SAIRAM CAMPUS	:	08.40 a.m.

ROUTE NO. 81 SITHALAPAKKAM TO COLLEGE

S 06	SANKARAPURAM	:	07.35 a.m.
I 16	INDIRA NAGAR (SITHALAPAKKAM)	:	07.37 a.m.
S 37	SITHALAPAKKAM BUS STOP	:	07.39 a.m.
J 02	JAYA NAGAR (SITHALAPAKKAM)	:	07.40 a.m.
S 21	SITHALAPAKKAM KUTT ROAD	:	07.42 a.m.
K 61	KANNI KOIL	:	07.52 a.m.
H 05	HOUSING BOARD (SITHALAPAKKAM)	:	07.55 a.m.
N 17	NOOTHANCHERRY	:	07.58 a.m.
M 46	MADAMBAKKAM SIVAN KOIL	:	08.05 a.m.
	SAIRAM CAMPUS	:	08.40 a.m.

ROUTE NO.82 PORUR ROUNDTANA TO COLLEGE

P 39	PORUR ROUNDTANA	:	07.35 a.m.
P 84	PORUR E.B.	:	07.38 a.m.
V 46	VIGNESHWARA NAGAR (PORUR)	:	07.40 a.m.
M 06	MADANANTHAPURAM-PORUR	:	07.45 a.m.
M 60	MOULIVAKKAM (BAIKADAI)	:	07.50 a.m.
G 05	GERUGAMBAKKAM B.S.	:	07.55 a.m.
K 43	KUNDRATHUR	:	08.00 a.m.
	SAIRAM CAMPUS	:	08.40 a.m.

ROUTE NO.83 POZHICALUR TO COLLEGE

P 32	POZHICALUR (B.S.)	:	07.30 a.m.
S 50	SIVAN KOIL (POZHICALUR)	:	07.35 a.m.
V 19	VENKATESHWARA NAGAR	:	07.40 a.m.
P 90	PAMMAL INDANE GAS COMPANY	:	07.45 a.m.
	SAIRAM CAMPUS	:	08.40 a.m.

ROUTE NO.84 ERANIAMMAN KOIL TO COLLEGE

E 04	ERANIAMMAN KOIL (VANDALUR)	:	08.00 a.m.
E 05	ERIKARAI (PERUNGALATHUR)	:	08.15 a.m.
	SAIRAM CAMPUS	:	08.40 a.m.

ROUTE NO.86 KANCHEEPURAM - I TO COLLEGE

K 54	KANCHEEPURAM BUS STOP	:	06.55 a.m.
K 82	KPM POOKADAI SATHIRAM	:	07.05 a.m.
K 94	KPM KAMMALVAR STREET	:	07.10 a.m.
K 78	KPM NEW RAILWAY STATION	:	07.15 a.m.
K 95	KPM INDIRA NAGAR	:	07.20 a.m.
K 77	KPM MEENAKSHI HOSPITAL	:	07.25 a.m.
K 79	KPM RAJAKULAM	:	07.35 a.m.
K 96	KPM PILLAI CHATHIRAM	:	07.40 a.m.
K 97	KPM SENTHAMANGALAM	:	07.45 a.m.
S 53	SUNGUVARCHATHIRAM B.S.	:	07.50 a.m.
S 52	SRIPERUMBATHUR RAJIVGANDHI MEMORIAL	:	08.00 a.m.
A 67	AMARAMEDU	:	08.10 a.m.
N 25	NALLUR	:	08.15 a.m.
S 43	SOMANGALAM SCHOOL	:	08.20 a.m.
	SAIRAM CAMPUS	:	08.40 a.m.

ROUTE NO.88 URAPAKKAM TO COLLEGE

U 02	URAPAKKAM (SCHOOL STOP)	:	07.45 a.m.
	SAIRAM CAMPUS	:	08.40 a.m.

ROUTE NO.89 NEW COLLEGE TO COLLEGE

V 56	VIVEKANANDAR ILLAM	:	07.10 a.m.
M 24	MIRSAHIBET MARKET	:	07.15 a.m.
N 10	NEW COLLEGE B.S.	:	07.25 a.m.
C 15	CHURCH PARK CONVENT	:	07.26 a.m.
T 23	THOUSAND LIGHTS	:	07.28 a.m.
D 02	DMS	:	07.30 a.m.
S 04	SAIDAPET	:	07.40 a.m.
	SAIRAM CAMPUS	:	08.40 a.m.

ROUTE NO.90 MOOLAKADAI TO COLLEGE

S 49	SHARMA NAGAR (KODUNGAIYUR)	:	06.50 a.m.
E 12	ERUKANCHERY	:	06.52 a.m.
M 58	MOOLAKADAI	:	06.55 a.m.
M 83	MOOLAKADAI KANAGAMASATHIRAM	:	07.00 a.m.
M 50	MADHAVARAM ROUNDTANA	:	07.02 a.m.
R 39	RETTERI RTO BUS STOP	:	07.05 a.m.
R 34	RELIANCE (RETTERI)	:	07.12 a.m.
S 13	SENTHIL NAGAR (RETTERI)	:	07.15 a.m.
L 10	LUCAS TVS	:	07.20 a.m.
B 15	BRITANIA	:	07.25 a.m.
A 58	AMBATTUR ESTATE	:	07.30 a.m.
	SAIRAM CAMPUS	:	08.40 a.m.

ROUTE NO.91 THIRUPORUR TO COLLEGE

T 34	THIRUPORUR	:	07.05 a.m.
K 46	KELAMBAKKAM	:	07.20 a.m.
K 62	KELAMBAKKAM HOSPITAL (CHETTINAD)	:	07.22 a.m.
P 47	PUDHUPAKKAM	:	07.25 a.m.
M 85	MAMBAKKAM	:	07.30 a.m.
K 47	KANDIGAI	:	07.35 a.m.
T 27	TAGORE ENGG. COLLEGE	:	07.38 a.m.
V 29	VENKAMPAKKAM	:	07.40 a.m.
K 48	KOLAPAKKAM	:	07.45 a.m.
V 10	VANDALUR ZOO	:	07.48 a.m.
	SAIRAM CAMPUS	:	08.40 a.m.

ROUTE NO.92 THIRUNINDRAVUR TO COLLEGE

A 28	AVADI MARKET	:	07.25 a.m.
R 21	RAM RATHNA THEATRE	:	07.27 a.m.
A 32	ANJANEYAR KOVIL (THIRUNINRAVUR)	:	07.32 a.m.
S 29	SHEIK – KAD	:	07.35 a.m.
H 11	HINDU COLLEGE (AVADI)	:	07.37 a.m.
P 51	PATTABIRAM	:	07.40 a.m.
P 74	PATTABIRAM RAILWAY GATE	:	07.42 a.m.

J 11	JAYA COLLEGE (AVADI)	:	07.45 a.m.
T 28	THIRUNINDRAVUR (AVADI)	:	07.47 a.m.
	SAIRAM CAMPUS	:	08.40 a.m.

ROUTE NO. 93 MAHARANI THEATRE TO COLLEGE

G 12	GROSS ROAD	:	06.43 a.m.
L 13	LAKSHMI AMMAN KOIL (TONDIARPET)	:	06.45 a.m.
T 11	TONDIARPET DEPOT	:	06.47 a.m.
A 64	APOLLO HOSPITAL (TONDIARPET)	:	06.49 a.m.
P 76	POLICE STATION (TONDIARPET)	:	06.50 a.m.
M 12	MAHARANI THEATRE	:	06.54 a.m.
C 04	CEMENT ROAD (ROYAPURAM)	:	06.57 a.m.
M 23	MINT	:	07.00 a.m.
S 58	STANLEY HOSPITAL	:	07.03 a.m.
A 22	ARTS COLLEGE (ROYAPURAM)	:	07.04 a.m.
M 69	MANNADI	:	07.05 a.m.
B 16	BROADWAY	:	07.07 a.m.
M 71	MOUNT ROAD (SHANTHI THEATRE)	:	07.10 a.m.
S 59	SATHYAMOORTHY BHAVAN	:	07.15 a.m.
	SAIRAM CAMPUS	:	08.40 a.m.

ROUTE NO. 94 KILPAUK TO COLLEGE

K 66	KILPAUK GARDEN B.S.	:	07.00 a.m.
K 85	KILPAUK GARDEN POOKADAI	:	07.05 a.m.
V 51	VINAYAGAR TEMPLE (KILPAUK GARDEN)	:	07.07 a.m.
K 86	KALLARAI (KILPAUK GARDEN)	:	07.10 a.m.
C 11	CHINTHAMANI B.S.	:	07.15 a.m.
R 32	RAILWAY QUARTERS ICF	:	07.20 a.m.
N 02	NATHAMUNI THEATRE	:	07.25 a.m.
A 51	ANNA NAGAR WEST DEPOT	:	07.32 a.m.
P 88	PARK ROAD SIGNAL	:	07.40 a.m.
V 35	VELAMMAL SCHOOL	:	07.45 a.m.
A 49	AMBATTUR BY PASS	:	07.48 a.m.
V 52	VANAGARAM (TOLL GATE)	:	07.50 a.m.
	SAIRAM CAMPUS	:	08.40 a.m.

ROUTE NO. 95 KANCHEEPURAM - III TO COLLEGE

K 11	KANCHIPURAM HOUSING BOARD(B.S)	:	06.40 a.m.
K 55	KANCHEEPURAM COLLECTOR OFFICE	:	06.42 a.m.
K 56	KPM METTU THERU	:	06.45 a.m.
K 57	KPM RENGASAWAMY KULAM	:	06.50 a.m.
K 14	KPM POLICE STATION	:	06.52 a.m.
K 58	KPM TOLLGATE	:	07.00 a.m.
K 81	KPM PACHAIYAPPAS COLLEGE	:	07.05 a.m.
A 46	AYYAMPET (KPM)	:	07.10 a.m.
E 02	EKANAMPET (KPM)	:	07.12 a.m.
R 05	RAJAMPET (KPM)	:	07.15 a.m.
	SAIRAM CAMPUS	:	08.40 a.m.

ROUTE NO. 96 MEDAVAKKAM - I TO COLLEGE

I 04	ICICI BANK (MEDAVAKKAM)	:	07.40 a.m.
R 37	RANGANATHAPURAM (MEDAVAKKAM)	:	07.45 a.m.
K 29	KOOT ROAD - MEDAVAKKAM	:	07.47 a.m.
K 10	KAMARAJAPURAM	:	07.50 a.m.
R 02	RAJAKILPAKKAM	:	07.53 a.m.
T 03	TAMBARAM	:	08.20 a.m.
	SAIRAM CAMPUS	:	08.40 a.m.

ROUTE NO. 97 CITLAPAKKAM TO COLLEGE

M 37	MIT BRIDGE	:	08.05 a.m.
P 53	PARK STOP - CITLAPAKKAM	:	08.08 a.m.
C 06	CITLAPAKKAM	:	08.12 a.m.
M 21	MEPZ	:	08.15 a.m.
T 03	TAMBARAM	:	08.20 a.m.
	SAIRAM CAMPUS	:	08.40 a.m.

ROUTE NO. 98 VELACHERY via VANUVAMPET TO COLLEGE

V 47	VELACHERY (TANSI NAGAR)	:	07.20 a.m.
V 20	VIJAYA NAGAR (B.S.)	:	07.25 a.m.
R 01	RAILWAY STATION (VELACHERY)	:	07.30 a.m.
V 48	VELACHERY SUNSHINE SCHOOL	:	07.35 a.m.
V 49	VELACHERY SAKTHIVEL TRADERS	:	07.38 a.m.
A 65	ADAMBAKKAM JAIN KOIL	:	07.40 a.m.
T 03	TAMBARAM	:	08.10 a.m.
	SAIRAM CAMPUS	:	08.40 a.m.

ROUTE NO. 99 KEELKATTALAI - II TO COLLEGE

P 55	PUZHITHIVAKKAM (Reliance Fresh)	:	07.30 a.m.
O 02	OIL MILL STOP	:	07.35 a.m.
A 61	ANJANEYAR KOIL (Nanganallur)	:	07.38 a.m.
T 29	THILLAI GANGA NAGAR BAKERY	:	07.40 a.m.
S 51	SPENCER SHOP (T.G. Nagar)	:	07.43 a.m.
T 02	T. G. SUBWAY	:	07.45 a.m.
A 35	ALANTHUR DEPOT	:	07.47 a.m.
T 03	TAMBARAM	:	08.05 a.m.
	SAIRAM CAMPUS	:	08.40 a.m.

ROUTE NO. 100 PARVATHY NAGAR TO COLLEGE

M 79	MADHANAPURAM (Mudichur)	:	08.02 a.m.
P 52	PARVATHY NAGAR - MUDICHUR	:	08.05 a.m.
P 04	PADMAVATHY KALYANAMANDAPAM	:	08.07 a.m.
B 08	BHARATHI NAGAR (MUDICHUR ROAD)	:	08.10 a.m.
	SAI RAM CAMPUS	:	08.40 a.m.

ROUTE NO. 101 KUTCHERY ROAD TO COLLEGE

N 24	NAGESWARA PARK	:	06.55 a.m.
L 12	LUZ CHURCH ROAD	:	07.00a.m.
A 57	ALWARPET ANJANEYAR KOIL	:	07.05 a.m.
S 07	SANSKRIT COLLEGE	:	07.08 a.m.
L 07	LUZ BUS STOP	:	07.12 a.m.
V 26	VINAYAKAR KOIL (SANTHOME)	:	07.13 a.m.

K 44	KUTCHERY ROAD	:	07.16 a.m.
M 49	MORE SHOP (M.R.C. ROAD)	:	07.18 a.m.
S 46	SANTHOME CHURCH	:	07.20 a.m.
T 03	TAMBARAM	:	08.10 a.m.
	SAIRAM CAMPUS	:	08.40 a.m.

ROUTE NO. 102 LAKSHMIPURAM TO COLLEGE

L 02	LAKSHMIPURAM SERVICE ROAD	:	08.04 a.m.
K 39	KULAM (MUDICHUR ROAD)	:	08.05 a.m.
	SAIRAM CAMPUS	:	08.40 a.m.

ROUTE NO. 103 KRISHNA NAGAR - II TO COLLEGE

K 37	KRISHNA NAGAR (MUDICHUR ROAD)	:	08.00 a.m.
L 02	LAKSHMIPURAM SERVICE ROAD	:	08.08 a.m.
	SAIRAM CAMPUS	:	08.40 a.m.

ROUTE NO. 104 S.P. KOIL TO COLLEGE

S 20	S.P. KOIL	:	07.30 a.m.
K 87	KELAKARANAI	:	07.32 a.m.
S 38	S.P. KOIL FORD	:	07.35 a.m.
M 03	MARAMALAI NAGAR BUS STOP	:	07.40 a.m.
G 14	GUDUVANCHERRY E.B.	:	07.45 a.m.
	SAIRAM CAMPUS	:	08.40 a.m.

ROUTE NO. 105 THIRUMALAI NAGAR TO COLLEGE

T 36	THIRUMALAI NAGAR (HASTINAPURAM)	:	07.55 a.m.
H 02	HASTHINAPURAM	:	08.10 a.m.
N 19	NEHRU NAGAR (HASTHINAPURAM)	:	08.18 a.m.
T 03	TAMBARAM	:	08.23 a.m.
	SAIRAM CAMPUS	:	08.40 a.m.

ROUTE NO. 106 KOVILAMBAKKAM TO COLLEGE

V 31	VELLA KALLU	:	07.30 a.m.
K 33	KOVILAMBAKKAM	:	07.35 a.m.
E 10	EACHANKADU (Keelkattalai)	:	07.40 a.m.

P 59	PETROL BUNK (PALLAVARAM BYPASS)	:	07.45 a.m.
V 32	VELS COLLEGE	:	07.47 a.m.
S 61	SANITORIUM SIGNAL	:	07.55 a.m.
	SAIRAM CAMPUS	:	08.40 a.m.

ROUTE NO. 107 MANALI BUS TERMINAL TO COLLEGE

M 61	MANALI INDIAN BANK	:	06.10 a.m.
M 62	MANALI MARKET	:	06.12 a.m.
M 63	MMDA (MATTHUR)	:	06.16 a.m.
A 44	ARULNAGAR	:	06.25 a.m.
T 33	THAPALPETTI (MADHAVARAM)	:	06.30 a.m.
M 58	MOOLAKADAI	:	06.35 a.m.
P 70	PERAMBUR SIMPSON	:	06.37 a.m.
T 40	THIRU – VI – KA BUS STAND	:	06.45 a.m.
R 29	RAMNAGAR (PERAMBUR)	:	06.50 a.m.
K 71	KOLATHUR CHURCH	:	06.52 a.m.
M 64	MOOKAMBIKAI COMPLEX	:	06.55 a.m.
D 07	DONBOSCO SCHOOL (PERAMBUR)	:	07.00 a.m.
R 34	RELIANCE RETTERI	:	07.10 a.m.
S 13	SENTHIL NAGAR (Retteri)	:	07.15 a.m.
D 09	DR HOSPITAL	:	07.17 a.m.
	SAIRAM CAMPUS	:	08.40 a.m.

ROUTE NO. 108 MEDAVAKKAM - II TO COLLEGE

G 11	GOWRIWAKKAM	:	07.35 a.m.
S 12	SEMBAKKAM	:	07.40 a.m.
M 11	MAHALAKSHMI NAGAR	:	07.43 a.m.
C 02	CAMP ROAD	:	07.45 a.m.
C 19	CONVENT SCHOOL	:	07.47 a.m.
C 20	CHRISTIAN COLLEGE	:	07.50 a.m.
	SAIRAM CAMPUS	:	08.40 a.m.

ROUTE NO. 109 MEDAVAKKAM - III TO COLLEGE

M 19	MEDAVAKKAM	:	07.40 a.m.
V 25	VIJAY NAGARAM (Medavakkam)	:	07.45 a.m.
S 08	SANTHOSHPURAM	:	07.50 a.m.
G 11	GOWRIVAKKAM	:	07.55 a.m.
C 02	CAMP ROAD	:	08.00 a.m.
	SAIRAM CAMPUS	:	08.40 a.m.

ROUTE NO. 110 & 111 CHROMPET V & VI TO COLLEGE

C 13	CHROMPET (B.S.)	:	08.07 a.m.
T 03	TAMBARAM	:	08.15 a.m.
	SAIRAM CAMPUS	:	08.40 a.m.

ROUTE NO. 112 MANNIVAKKAM TO COLLEGE

M 16	MANNIVAKKAM	:	07.45 a.m.
M 51	MANNIVAKKAM KOOT ROAD	:	07.50 a.m.
N 20	NATESAN SCHOOL (MANNIVAKKAM)	:	07.52 a.m.
L 09	LAKSHMI NAGAR	:	07.54 a.m.
M 29	MUDICHUR	:	07.55 a.m.
	SAIRAM CAMPUS	:	08.40 a.m.

ROUTE NO. 114 RAMACHANDRA MEDICAL COLLEGE TO COLLEGE

R 07	RAMACHANDRA MEDICAL COLLEGE	:	07.35 a.m.
I 11	IYYAPPANTHANGAL	:	07.40 a.m.
K 88	KATTUPAKKAM (B.S.)	:	07.42 a.m.
K 40	KUMANANCHAVADI	:	07.45 a.m.
G 28	GANGAI AMMAN KOIL	:	07.48 a.m.
M 05	MAANGADU	:	07.50 a.m.
K 43	KUNDRATHUR	:	07.52 a.m.
	SAIRAM CAMPUS	:	08.40 a.m.

ROUTE NO. 115 MUTHAPUDUPET TO COLLEGE

M 52	MUTHUPUDUPET	:	07.05 a.m.
C 22	CRPF	:	07.10 a.m.
H 09	HVF HOSPITAL	:	07.15 a.m.

H 08	HVF SBI BANK	:	07.20 a.m.
H 07	HVF ARCH	:	07.25 a.m.
H 06	HVF ESTATE	:	07.30 a.m.
A 55	AJAY STADIUM	:	07.32 a.m.
A 27	AVADI (B.S.)	:	07.35 a.m.
A 34	AVADI CHECK POST	:	07.38 a.m.
R 21	RAMRATHINA THERE	:	07.40 a.m.
A 28	AVADI MARKET	:	07.42 a.m.
P 49	PANDIYAN RICE MILL	:	07.45 a.m.
G 18	GOVARDANAGIRI	:	07.48 a.m.
P 50	PARUTHIPATTU	:	07.50 a.m.
S 47	SENNER KUPPAM	:	07.55 a.m.
	SAIRAM CAMPUS	:	08.40 a.m.

ROUTE NO. 116 OMR TO COLLEGE

C 29	CHETTINAD HOSPITAL (OMR)	:	06.50 a.m.
P 68	PADUR	:	07.00 a.m.
S 42	SIRUCHERI	:	07.05 a.m.
N 23	NAVALUR	:	07.07 a.m.
C 25	CHEMMANCHERY	:	07.10 a.m.
K 91	KUMARAN NAGAR (CHEMMANCHERY)	:	07.12 a.m.
P 69	PONNIAMMAN KOIL (CHEMMANCHERY)	:	07.15 a.m.
I 17	INFOSYS (SHOLINGANALLUR)	:	07.20 a.m.
P 28	PERUMBAKKAM	:	07.30 a.m.
V 50	VIDYAA SCHOOL (PUDHU NAGAR)	:	07.35 a.m.
C 19	CONVENT SCHOOL	:	07.50 a.m.
	SAIRAM CAMPUS	:	08.40 a.m.

ROUTE NO. 117 WALAJABAD TO COLLEGE

W 01	WALAJABAD	:	07.10 a.m.
V 30	VARANAVASI	:	07.15 a.m.
P 17	PANRUTI	:	07.20 a.m.
O 09	ORAKADAM (WALAJABAD)	:	07.30 a.m.
P 02	PADAPPAI	:	07.40 a.m.

M 51 MANNIVAKKAM KUTT ROAD : 07.55 a.m.
SAIRAM CAMPUS : 08.40 a.m.

ROUTE NO. 118 THIRUVERKADU TO COLLEGE

T 47 THIRUVERKADU : 07.15 a.m.
V 33 VELAPPAN CHAVADI : 07.30 a.m.
S 10 SAVITHA MEDICAL COLLEGE : 07.35 a.m.
S 48 SENNER KUPPAM BRIDGE : 07.40 a.m.
R 31 R. R. B. ENERGY COMPANY : 07.42 a.m.
P 77 POONAMALLEE BYPASS BRIDGE : 07.50 a.m.
SAIRAM CAMPUS : 08.40 a.m.

ROUTE NO. 119 M.I.T. GATE TO COLLEGE

M 02 M I T GATE : 08.05 a.m.
S 18 SIDDHA HOSPITAL (MEPZ) : 08.10 a.m.
SAIRAM CAMPUS : 08.40 a.m.

ROUTE NO. 120 REDHILLS TO COLLEGE

G 24 GANDHI NAGAR (REDHILLS) : 06.30 a.m.
R 30 REDHILLS : 06.40 a.m.
K 72 KAVANGARAI (Redhills) : 06.50 a.m.
P 71 PUZHAL : 06.55 a.m.
P 72 PUZHAL CAMP : 07.00 a.m.
S 44 SURAPET : 07.10 a.m.
K 49 KALLIKUPPAM : 07.15 a.m.
S 30 SINGAPORE COMPLEX (Avadi) : 07.20 a.m.
V 42 VIVEKANANDA SCHOOL (Ambattur) : 07.23 a.m.
R 19 RAGHAVENDRA KOVIL : 07.25 a.m.
T 18 THIRUMULLAIVOYAL : 07.28 a.m.
V 23 VAISHNAVI NAGAR : 07.30 a.m.
M 65 MURUGAPPA POLYTECHNIC : 07.32 a.m.
SAIRAM CAMPUS : 08.40 a.m.

ROUTE NO. 121 MADAMBAKKAM TO COLLEGE

S 27	SUDARSHAN NAGAR (CAMP ROAD)	:	07.30 a.m.
H 01	HANSA GARDEN	:	07.35 a.m.
J 10	JAINS APARTMENT	:	07.37 a.m.
K 04	K.V.- II (BALAJI NAGAR)	:	07.40 a.m.
	SAIRAM CAMPUS	:	08.40 a.m.

ROUTE NO. 122 ANNA NAGAR WEST TO COLLEGE

A 51	ANNA NAGAR WEST (Depot)	:	07.20 a.m.
G 27	GANGA SWEETS (Anna Nagar)	:	07.25 a.m.
P 61	PARK ROAD (GOLD FLATS ANNA NAGAR)	:	07.27 a.m.
C 23	COLLECTOR NAGAR	:	07.32 a.m.
M 59	MURUGAPPA NAGAR	:	07.33 a.m.
V 36	VAVIN	:	07.35 a.m.
J 07	J.J. NAGAR WATER TANK	:	07.36 a.m.
I 18	INDIAN PETROL BUNK (Anna Nagar)	:	07.42 a.m.
M 82	MOGAPPAIR STATE BANK	:	07.45 a.m.
A 49	AMBATTUR BYPASS	:	07.50 a.m.
T 03	TAMBARAM	:	08.00 a.m.
	SAIRAM CAMPUS	:	08.40 a.m.

ROUTE NO. 123 KAMATCHI HOSPITAL TO COLLEGE

K 83	KAMATCHI HOSPITAL	:	07.40 a.m.
P 85	PALLIKARANAI (VINAYAGAPURAM)	:	07.42 a.m.
E 10	ECHANKADU (KEELKATTALAI)	:	07.43 a.m.
V 32	VELS COLLEGE	:	07.45 a.m.
S 18	SIDDHA HOSPITAL (MEPZ)	:	08.00 a.m.
	SAIRAM CAMPUS	:	08.40 a.m.

ROUTE NO. 124 POONDY BAZAAR TO COLLEGE

N 18	NATIONAL SCHOOL	:	07.55 a.m.
P 35	POONDY BAZZAR	:	08.00 a.m.
	SAIRAM CAMPUS	:	08.40 a.m.

ROUTE NO. 125 VALASARAVAKKAM TO COLLEGE

L 11	LAKSHMI NAGAR (PORUR)	:	07.25 a.m.
K 74	KARAMPAKKAM (PORUR)	:	07.27 a.m.
P 86	PANNICHERY	:	07.35 a.m.
K 34	KOVUR	:	07.40 a.m.
K 89	KOVUR EB OFFICE	:	07.42 a.m.
M 84	MUNDRAMKATTALAI	:	07.45 a.m.
K 43	KUNDRATHUR (BUS STOP)	:	07.55 a.m.
	SAIRAM CAMPUS	:	08.40 a.m.

ROUTE NO. 126 KANDIGAI POLICE QUARTERS TO COLLEGE

K 90	KANDIGAI POLICE QUARTERS	:	07.50 a.m.
K 47	KANDIGAI	:	07.55 a.m.
R 38	RATHNAMANGALAM	:	08.00 a.m.
K 48	KOLAPAKKAM	:	08.07 a.m.
V 10	VANDALUR ZOO	:	08.15 a.m.
	SAIRAM CAMPUS	:	08.40 a.m.

ROUTE NO. 127 PAMMAL TO COLLEGE

P 14	PAMMAL (RETTAI PILLIYAR KOVIL)	:	07.50 a.m.
P 33	POZHICHALLUR KOOT ROAD	:	07.52 a.m.
N 30	NAGALKENE MGR SILAI	:	08.03 a.m.
N 31	NAGALKENE PETROL BUNK	:	08.05 a.m.
T 45	THIRUNEERMALAI	:	08.08 a.m.
	SAIRAM CAMPUS	:	08.40 a.m.

ROUTE NO. 128 MAPPEDU TO COLLEGE

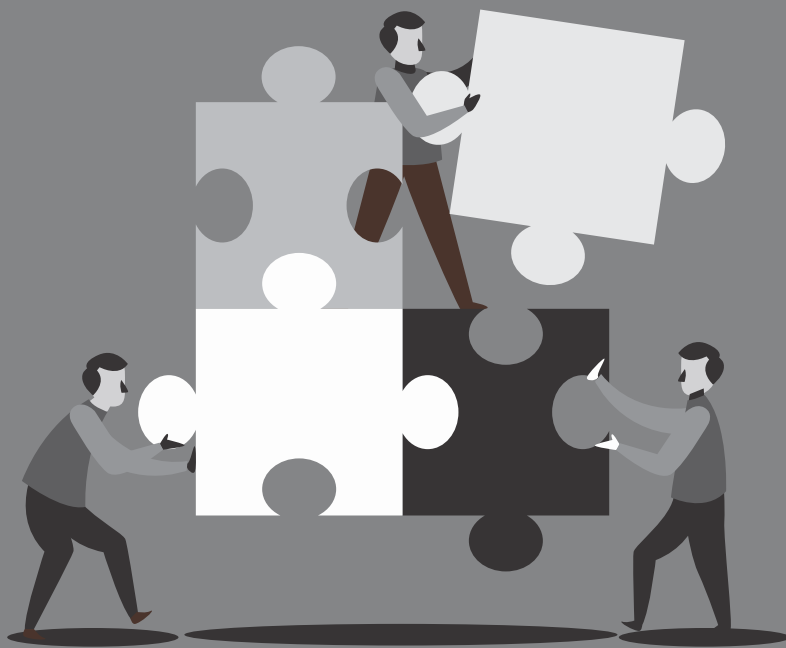
M 36	MAPPEDU	:	07.45 a.m.
T 31	THIRUVANCHERRY	:	07.50 a.m.
L 14	LAKSHMI AMMAL COLLEGE	:	07.52 a.m.
B 07	BHARATH ENGG COLLEGE	:	07.55 a.m.

I 07	INDRA NAGAR (CAMP ROAD)	:	07.57 a.m.
C 02	CAMP ROAD	:	07.59 a.m.
	SAIRAM CAMPUS	:	08.40 a.m.

ROUTE NO. 129 KUNDRATHUR TO COLLEGE

E 15	ESWARAN KOIL (KUNDRATHUR)	:	08.10 a.m.
P 87	PETROL BUNK (SERUGALATHUR)	:	08.15 a.m.
A 66	ANJUKA NAGAR (B.S.)	:	08.20 a.m.
S 43	SOMANGALAM MELATHUR SCHOOL	:	08.30 a.m.
	SAIRAM CAMPUS	:	08.40 a.m.

Apart from the above mentioned route buses, 25 additional buses are also operated as per the requirements covering different routes.



Enjoy & Experience

*The Bliss of Growth,
The Glory of Action
and the Splendour of Beauty
through Hardwork & Teamspirit.*

Plan well

Progress well

Have a good academic year !

**Wish you a fabulous and meaningful
Academic Year 2019- 2020.**

ACADEMIC CALENDAR 2019-2020

JUNE 2019

1	SAT	
2	SUN	Holiday
3	MON	
4	TUE	
5	WED	
6	THU	
7	FRI	
8	SAT	
9	SUN	Holiday
10	MON	
11	TUE	
12	WED	
13	THU	
14	FRI	
15	SAT	
16	SUN	Holiday
17	MON	
18	TUE	
19	WED	
20	THU	Re-opening day for II, III and IV years
21	FRI	
22	SAT	
23	SUN	Holiday
24	MON	
25	TUE	
26	WED	
27	THU	
28	FRI	
29	SAT	
30	SUN	Holiday

Education is a progressive discovery of one's own ignorance.

JULY 2019

1	MON	
2	TUE	
3	WED	
4	THU	
5	FRI	
6	SAT	
7	SUN	Holiday
8	MON	
9	TUE	
10	WED	
11	THU	
12	FRI	
13	SAT	
14	SUN	Holiday
15	MON	
16	TUE	
17	WED	
18	THU	
19	FRI	
20	SAT	
21	SUN	Holiday
22	MON	Test - I (III, IV year) Begins
23	TUE	
24	WED	
25	THU	
26	FRI	
27	SAT	Test - I (II, III, IV year) ends
28	SUN	
29	MON	
30	TUE	
31	WED	

The whole purpose of education is to turn mirrors into windows.

AUGUST 2019

1	THU	
2	FRI	
3	SAT	
4	SUN	Holiday
5	MON	
6	TUE	
7	WED	
8	THU	
9	FRI	
10	SAT	
11	SUN	Holiday
12	MON	Bakrid
13	TUE	
14	WED	
15	THU	Independence Day
16	FRI	
17	SAT	
18	SUN	Holiday
19	MON	
20	TUE	
21	WED	
22	THU	
23	FRI	Krishna Jayanthi
24	SAT	
25	SUN	Holiday
26	MON	Test - II (II, III, IV year) Begins
27	TUE	
28	WED	
29	THU	
30	FRI	
31	SAT	Test - II (II, III, IV year) ends

Education is simply the soul of a society as it passes from one generation to another.

SEPTEMBER 2019

1	SUN	Holiday
2	MON	Vinayagar Chathurthi
3	TUE	
4	WED	Test - I (I year) Begins
5	THU	Teachers' Day
6	FRI	
7	SAT	
8	SUN	Holiday
9	MON	
10	TUE	Muharram
11	WED	
12	THU	(I year) ends
13	FRI	
14	SAT	
15	SUN	Engineers' Day Holiday
16	MON	
17	TUE	
18	WED	
19	THU	
20	FRI	
21	SAT	
22	SUN	Holiday
23	MON	
24	TUE	
25	WED	
26	THU	
27	FRI	
28	SAT	Model Exam Begins
29	SUN	Holiday
30	SAT	

A mind stretched by new ideas, may never return to its original dimensions and always set for research.

OCTOBER 2019

1	TUE	
2	WED	Gandhi Jayanthi
3	THU	
4	FRI	
5	SAT	Model Exam ends
6	SUN	Holiday
7	MON	Saraswathi Pooja
8	TUE	Vijayadasami
9	WED	
10	THU	Test II (I year) begins
11	FRI	
12	SAT	
13	SUN	Holiday
14	MON	
15	TUE	
16	WED	Test II (I year) ends
17	THU	
18	FRI	
19	SAT	
20	SUN	Holiday
21	MON	Practical Exams (Tentative)
22	TUE	
23	WED	
24	THU	
25	FRI	
26	SAT	
27	SUN	Deepvali Holiday
28	MON	
29	TUE	
30	WED	
31	THU	

What sculpture is to a block of marble, education is to the human soul.

NOVEMBER 2019

1	FRI	
2	SAT	
3	SUN	Holiday
4	MON	Theory University Exam (Tentative)
5	TUE	
6	WED	
7	THU	
8	FRI	
9	SAT	
10	SUN	Milad-un-Nabi Holiday
11	MON	
12	TUE	
13	WED	
14	THU	
15	FRI	
16	SAT	
17	SUN	Holiday
18	MON	
19	TUE	
20	WED	
21	THU	
22	FRI	
23	SAT	
24	SUN	Holiday
25	MON	
26	TUE	
27	WED	
28	THU	
29	FRI	
30	SAT	
30	30	

Education is not only a ladder of opportunity, but it is an investment for our future and a tool to preserve culture.

DECEMBER 2019

1	SUN	Holiday
2	MON	
3	TUE	
4	WED	
5	THU	
6	FRI	
7	SAT	
8	SUN	Holiday
9	MON	Model Exam (1 year) Begins
10	TUE	
11	WED	
12	THU	
13	FRI	
14	SAT	
15	SUN	Holiday
16	MON	
17	TUE	
18	WED	Model Exam (1 year) Ends
19	THU	
20	FRI	
21	SAT	
22	SUN	Holiday
23	MON	
24	TUE	
25	WED	Christmas
26	THU	
27	FRI	
28	SAT	
29	SUN	
30	MON	
31	TUE	New Year Eve

Reading maketh a full man; Conference a wise man; Writing an exact man.

JANUARY 2020

1	WED	New Year's Day
2	THU	Re-Opening (I Year, II Sem - Tentative)
3	FRI	
4	SAT	
5	SUN	Holiday
6	MON	
7	TUE	
8	WED	
9	THU	
10	FRI	
11	SAT	
12	SUN	
13	MON	Bhogi
14	TUE	Pongal
15	WED	Thiruvalluvar Day
16	THU	Uzhavar Thirunal
17	FRI	Test - I (II, III & IV Years - Tentative)
18	SAT	
19	SUN	Holiday
20	MON	
21	TUE	
22	WED	
23	THU	
24	FRI	
25	SAT	
26	SUN	Republic Day
27	MON	
28	TUE	
29	WED	
30	THU	
31	FRI	

The important thing in education is not to stop questioning.

FEBRUARY 2020

1	SAT	
2	SUN	Holiday
3	MON	
4	TUE	Test I (I Year - Tentative)
5	WED	
6	THU	
7	FRI	
8	SAT	
9	SUN	Holiday
10	MON	
11	TUE	
12	WED	
13	THU	
14	FRI	
15	SAT	
16	SUN	Holiday
17	MON	
18	TUE	
19	WED	Test II (II, III & IV Years - Tentative)
20	THU	
21	FRI	
22	SAT	
23	SUN	Holiday
24	MON	
25	TUE	
26	WED	
27	THU	
28	FRI	
29	SAT	

Learning is not attained by chance; it must be sought for with ardor and attended to with diligence.

MARCH 2020

1	SUN	Holiday
2	MON	Test II (I Year - Tentative)
3	TUE	
4	WED	
5	THU	
6	FRI	
7	SAT	
8	SUN	International Women's Day Holiday
9	MON	
10	TUE	
11	WED	
12	THU	
13	FRI	
14	SAT	
15	SUN	Holiday
16	MON	
17	TUE	
18	WED	
19	THU	
20	FRI	
21	SAT	
22	SUN	Holiday
23	MON	
24	TUE	
25	WED	Model Exam. II, III & Final Year (Tentative)
26	THU	
27	FRI	
28	SAT	
29	SUN	Holiday
30	MON	
31	TUE	

Anyone who has never made a mistake has never tried anything new.

APRIL 2020

1	WED	
2	THU	Founder's Day
3	FRI	
4	SAT	
5	SUN	Holiday
6	MON	Mahavir Jayanthi
7	TUE	
8	WED	
9	THU	
10	FRI	Good Friday
11	SAT	
12	SUN	Holiday
13	MON	Model Examinations - I Year (Tentative)
14	TUE	Tamil New Year's Day & Dr. Ambedkar's Birthday
15	WED	
16	THU	
17	FRI	
18	SAT	
19	SUN	Holiday
20	MON	
21	TUE	
22	WED	University Theory Examinations (II, III & Final year (Tentative)
23	THU	
24	FRI	
25	SAT	
26	SUN	Holiday
27	MON	
28	TUE	
29	WED	
30	THU	

Education is the passport to the future, for tomorrow belongs to those who prepare for it today.

MAY 2020

1	FRI	May Day
2	SAT	
3	SUN	Holiday
4	MON	
5	TUE	
6	WED	
7	THU	University Practical Examinations (I Year, II Sem - Tentative)
8	FRI	
9	SAT	
10	SUN	Holiday
11	MON	
12	TUE	
13	WED	
14	THU	
15	FRI	
16	SAT	
17	SUN	Holiday
18	MON	
19	TUE	
20	WED	University Theory Examinations - (I Year, II Sem - Tentative)
21	THU	
22	FRI	
23	SAT	
24	SUN	Holiday
25	MON	
26	TUE	
27	WED	
28	THU	
29	FRI	
30	SAT	
31	SUN	Holiday

Real knowledge is intrinsic and it is built from the ground up.

2019

JANUARY 2019						
S	M	T	W	T	F	S
		1	2	3	4	5
6	7	8	9	10	11	12
13	14	15	16	17	18	19
20	21	22	23	24	25	26
27	28	29	30	31		

FEBRUARY 2019						
S	M	T	W	T	F	S
					1	2
3	4	5	6	7	8	9
10	11	12	13	14	15	16
17	18	19	20	21	22	23
24	25	26	27	28		

MARCH 2019						
S	M	T	W	T	F	S
31					1	2
3	4	5	6	7	8	9
10	11	12	13	14	15	16
17	18	19	20	21	22	23
24	25	26	27	28	29	30

APRIL 2019						
S	M	T	W	T	F	S
	1	2	3	4	5	6
7	8	9	10	11	12	13
14	15	16	17	18	19	20
21	22	23	24	25	26	27
28	29	30				

MAY 2019						
S	M	T	W	T	F	S
			1	2	3	4
5	6	7	8	9	10	11
12	13	14	15	16	17	18
19	20	21	22	23	24	25
26	27	28	29	30	31	

JUNE 2019						
S	M	T	W	T	F	S
30						1
2	3	4	5	6	7	8
9	10	11	12	13	14	15
16	17	18	19	20	21	22
23	24	25	26	27	28	29

JULY 2019						
S	M	T	W	T	F	S
1	2	3	4	5	6	7
8	9	10	11	12	13	14
15	16	17	18	19	20	21
22	23	24	25	26	27	28
29	30	31				

AUGUST 2019						
S	M	T	W	T	F	S
				1	2	3
4	5	6	7	8	9	10
11	12	13	14	15	16	17
18	19	20	21	22	23	24
25	26	27	28	29	30	31

SEPTEMBER 2019						
S	M	T	W	T	F	S
1	2	3	4	5	6	7
8	9	10	11	12	13	14
15	16	17	18	19	20	21
22	23	24	25	26	27	28
29	30					

OCTOBER 2019						
S	M	T	W	T	F	S
		1	2	3	4	5
6	7	8	9	10	11	12
13	14	15	16	17	18	19
20	21	22	23	24	25	26
27	28	29	30	31		

NOVEMBER 2019						
S	M	T	W	T	F	S
					1	2
3	4	5	6	7	8	9
10	11	12	13	14	15	16
17	18	19	20	21	22	23
24	25	26	27	28	29	30

DECEMBER 2019						
S	M	T	W	T	F	S
1	2	3	4	5	6	7
8	9	10	11	12	13	14
15	16	17	18	19	20	21
22	23	24	25	26	27	28
29	30	31				

2020

JANUARY 2020						
S	M	T	W	T	F	S
			1	2	3	4
5	6	7	8	9	10	11
12	13	14	15	16	17	18
19	20	21	22	23	24	25
26	27	28	29	30	31	

FEBRUARY 2020						
S	M	T	W	T	F	S
						1
2	3	4	5	6	7	8
9	10	11	12	13	14	15
16	17	18	19	20	21	22
23	24	25	26	27	28	29

MARCH 2020						
S	M	T	W	T	F	S
1	2	3	4	5	6	7
8	9	10	11	12	13	14
15	16	17	18	19	20	21
22	23	24	25	26	27	28
29	30	31				

APRIL 2020						
S	M	T	W	T	F	S
			1	2	3	4
5	6	7	8	9	10	11
12	13	14	15	16	17	18
19	20	21	22	23	24	25
26	27	28	29	30		

MAY 2020						
S	M	T	W	T	F	S
31					1	2
3	4	5	6	7	8	9
10	11	12	13	14	15	16
17	18	19	20	21	22	23
24	25	26	27	28	29	30

JUNE 2020						
S	M	T	W	T	F	S
	1	2	3	4	5	6
7	8	9	10	11	12	13
14	15	16	17	18	19	20
21	22	23	24	25	26	27
28	29	30				

JULY 2020						
S	M	T	W	T	F	S
			1	2	3	4
5	6	7	8	9	10	11
12	13	14	15	16	17	18
19	20	21	22	23	24	25
26	27	28	29	30	31	

AUGUST 2020						
S	M	T	W	T	F	S
30	31					1
2	3	4	5	6	7	8
9	10	11	12	13	14	15
16	17	18	19	20	21	22
23	24	25	26	27	28	29

SEPTEMBER 2020						
S	M	T	W	T	F	S
		1	2	3	4	5
6	7	8	9	10	11	12
13	14	15	16	17	18	19
20	21	22	23	24	25	26
27	28	29	30			

OCTOBER 2020						
S	M	T	W	T	F	S
				1	2	3
4	5	6	7	8	9	10
11	12	13	14	15	16	17
18	19	20	21	22	23	24
25	26	27	28	29	30	31

NOVEMBER 2020						
S	M	T	W	T	F	S
1	2	3	4	5	6	7
8	9	10	11	12	13	14
15	16	17	18	19	20	21
22	23	24	25	26	27	28
29	30					

DECEMBER 2020						
S	M	T	W	T	F	S
		1	2	3	4	5
6	7	8	9	10	11	12
13	14	15	16	17	18	19
20	21	22	23	24	25	26
27	28	29	30	31		

TIME TABLE

I & IV Year

Year

Semester

PERIODS DAYS	1 9.00 to 9.50	2 9.50 to 10.45	10.40 to 10.55	3 10.55 to 11.45	11.45 to 12.35	4 12.35 to 1.25	5 1.25 to 2.15	6 2.15 to 3.05	3.05 to 3.20	7 3.20 to 4.10
Monday			B R E A K		L U N C H B R E A K				B R E A K	
Tuesday										
Wednesday										
Thursday										
Friday										

Education is the power to think clearly, the power to act well, and the power to appreciate life.

TIME TABLE

I & IV Year

Year

Semester

PERIODS DAYS	1 9.00 to 9.50	2 9.50 to 10.40	10.40 to 10.55	3 10.55 to 11.45	11.45 to 12.35	4 12.35 to 1.25	5 1.25 to 2.15	6 2.15 to 3.05	3.05 to 3.20	7 3.20 to 4.10
Monday			B R E A K		L U N C H				B R E A K	
Tuesday										
Wednesday										
Thursday										
Friday										

The real key to learning something quickly is to take a deliberate, intelligent approach to your learning.

TIME TABLE

II & III Year

Year

Semester

PERIODS DAYS	1 9.00 to 9.50	2 9.50 to 10.40	10.40 to 10.55	3 10.55 to 11.45	11.45 to 12.35	4 12.35 to 1.25	5 1.25 to 2.15	6 2.15 to 3.05	3.05 to 3.20	7 3.20 to 4.10
Monday			B R E A K		L U N C H B R E A K				B R E A K	
Tuesday										
Wednesday										
Thursday										
Friday										

The purpose of education is to replace an empty mind with an open mind.

TIME TABLE

II & III Year

Year

Semester

PERIODS DAYS	1 9.00 to 9.50	2 9.50 to 10.40	10.40 to 10.50	3 10.50 to 11.40	4 11.40 to 12.30	12.30 to 1.20	5 1.20 to 2.10	6 2.10 to 3.00	3.00 to 3.10	7 3.10 to 4.00
Monday			B R E A K			L U N C H B R E A K			B R E A K	
Tuesday										
Wednesday										
Thursday										
Friday										

Real knowledge is to know the extent of one's ignorance.

ODD SEMESTER

Goals :
.....
.....

Plans:
.....
.....

Action Done :
.....
.....
.....

Achievements :
.....
.....

EVEN SEMESTER

Goals :
.....
.....

Plans: _____
.....
.....
.....

Action Done :
.....
.....
.....
.....

Achievements :
.....
.....

ANNA UNIVERSITY REGULATIONS - B.E. / B.TECH.

REGULATIONS 2017 - CHOICE BASED CREDIT SYSTEM

This Regulations is applicable to the students admitted to B.E./B.Tech. Programmes at all Engineering Colleges affiliated to Anna University, Chennai (other than Autonomous Colleges) and to all the University Colleges of Engineering of Anna University, Chennai from the academic year 2017-2018 onwards.

1. PRELIMINARY DEFINITIONS AND NOMENCLATURE

In these Regulations, unless the context otherwise requires:

- i) “Programme” means Degree Programme, that is B.E./B.Tech. Degree Programme.
- ii) “Discipline” means specialization or branch of B.E./B.Tech. Degree Programme, like Civil Engineering, Textile Technology, etc.
- iii) “Course” means a theory or practical subject that is normally studied in a semester, like Mathematics, Physics, etc.
- iv) “Director, Academic Courses” means the authority of the University who is responsible for all academic activities of the Academic Programmes for implementation of relevant rules of this Regulations pertaining to the Academic Programmes.
- v) “Chairman” means the Head of the Faculty.
- vi) “Head of the Institution” means the Principal of the College.
- vii) “Head of the Department” means head of the Department concerned.
- viii) “Controller of Examinations” means the authority of the University who is responsible for all activities of the University Examinations.
- ix) “University” means ANNA UNIVERSITY, CHENNAI.

ADMISSION

2.1 Candidates seeking admission to the first semester of the eight semester B.E. / B.Tech. Degree Programme: Should have passed the Higher Secondary Examinations of (10+2) Curriculum (Academic Stream) prescribed by the Government of Tamil Nadu with Mathematics, Physics and Chemistry as three of the four subjects of study under Part-III or any examination of any other University or authority accepted by the Syndicate of Anna University as equivalent thereto.

(OR)

Should have passed the Higher Secondary Examination of Vocational stream (Vocational groups in Engineering / Technology) as prescribed by the Government of Tamil Nadu.

2.2 Lateral entry admission

- (i) The candidates who possess the Diploma in Engineering / Technology awarded by the State Board of Technical Education, Tamilnadu or its equivalent are eligible to apply for Lateral entry admission to the third semester of B.E. / B.Tech. in the branch corresponding to the branch of study.

(OR)

- (ii) The candidates who possess the Degree in Science (B.Sc.,) (10+2+3 stream) with Mathematics as a subject at the B.Sc. Level are eligible to apply for Lateral entry admission to the third semester of B.E. / B.Tech.

Such candidates shall undergo two additional Engineering subject(s) in the third and fourth semesters as prescribed by the University.

3. PROGRAMMES OFFERED

B.E. / B.Tech. Programmes under the Faculty of Civil Engineering, Faculty of Mechanical Engineering, Faculty of Electrical Engineering, Faculty of Information and Communication Engineering and Faculty of Technology.

4. STRUCTURE OF PROGRAMMES

4.1 Categorization of Courses

Every B.E. / B. Tech. Programme will have a curriculum with syllabi consisting of theory and practical courses that shall be categorized as follows:

- i. Humanities and Social Sciences (HS) courses include Technical English, Engineering Ethics and Human Values, Communication skills, Environmental Science and Engineering.
- ii. Basic Sciences (BS) courses include Mathematics, Physics, Chemistry, Biology, etc.
- iii. Engineering Sciences (ES) courses include Engineering practices, Engineering Graphics, Basics of Electrical / Electronics / Mechanical / Computer Engineering, Instrumentation etc.
- iv. Professional Core (PC) courses include the core courses relevant to the chosen specialization/branch.

- v. Professional Elective (PE) courses include the elective courses relevant to the chosen specialization/branch.
- vi. Open Elective (OE) courses include the courses from other branches which a student can choose from the list specified in the curriculum of the students B.E. / B. Tech. / B. Arch. Programmes.
- vii. Employability Enhancement Courses (EEC) include Project Work and/or Internship, Seminar, Professional Practices, Case Study and Industrial/Practical Training.

4.2 Personality and Character Development

All students shall enroll, on admission, in any one of the personality and character development programmes (NCC/NSS/NSO/YRC) and undergo training for about 80 hours and attend a camp of about seven days. The training shall include classes on hygiene and health awareness and also training in first-aid.

National Cadet Corps (NCC) will have about 20 parades.

National Service Scheme (NSS) will have social service activities in and around the College / Institution.

National Sports Organization (NSO) will have sports, Games, Drills and Physical exercises.

Youth Red Cross (YRC) will have activities related to social services in and around College/Institutions.

While the training activities will normally be during weekends, the camp will normally be during vacation period.

4.3 Number of courses per semester

Each semester curriculum shall normally have a blend of lecture courses not exceeding 7 and Laboratory courses and Employability Enhancement Course(s) not exceeding 4. Each Employability Enhancement Course may have credits assigned as per clause 4.4. However, the total number of courses per semester shall not exceed 10.

4.4 Credit Assignment

Each course is assigned certain number of credits based on the following:

Contact period per week	CREDITS
1 Lecture Period	1
2 Tutorial Periods	1
2 Laboratory Periods (also for EEC courses like / Seminar / Project Work / Case study / etc.)	1

The Contact Periods per week for Tutorials and Practical can only be in multiples of 2.

4.5.Industrial Training / Internship

The students may undergo Industrial training for a period as specified in the Curriculum during summer / winter vacation. In this case the training has to be undergone continuously for the entire period.

The students may undergo Internship at Research organization / University (after due approval from the Department Consultative Committee) for the period prescribed in the curriculum during summer / winter vacation, in lieu of Industrial training.

4.6 Industrial Visit

Every student is required to go for at least one Industrial Visit every year starting from the second year of the Programme. The Heads of Departments shall ensure that necessary arrangements are made in this regard.

4.7 Value Added Courses

The Students may optionally undergo Value Added Courses and the credits earned through the Value Added Courses shall be over and above the total credit requirement prescribed in the curriculum for the award of the degree. One / Two credit courses shall be offered by a Department of an institution with the prior approval from the Head of the Institution. The details of the syllabus, time table and faculty may be sent to the Centre for Academic Courses and the Controller of Examinations after approval from the Head of the Institution concerned atleast one month before the course is offered. Students can take a maximum of two one credit courses / one two credit course during the entire duration of the Programme.

4.8 Online Courses

4.8.1 Students may be permitted to credit only one online course of 3 credits with the approval of Head of the Institution and Centre for Academic Courses.

4.8.2 Students may be permitted to credit one online course (which are provided with certificate) subject to a maximum of three credits. The approved list of online courses will be provided by the Centre for Academic courses from time to time. The student needs to obtain certification or credit to become eligible for writing the End Semester Examination to be conducted by Controller of Examinations, Anna University. The details regarding online courses taken up by students should be sent to the Controller of Examinations, Anna University and Centre for Academic Courses one month before the commencement of End Semester Examination.

4.9 The students satisfying the following conditions shall be permitted to carry out their final semester Project work for six months in industry/research organizations.

The student should not have current arrears and shall have CGPA of 7.50 and above.

The student shall undergo the eighth semester courses in the sixth and seventh semesters. The Head of

Department, in consultation with the faculty handling the said courses shall forward the proposal recommended by the Head of Institution to the Controller of Examinations through the Director, Centre for Academic courses for approval at least 4 weeks before the commencement of the sixth semester of the programme for approval.

4.10 Medium of Instruction

The medium of instruction is English for all courses, examinations, seminar presentations and project / thesis / dissertation reports except for the programmes offered in Tamil Medium.

5. DURATION OF THE PROGRAMME

5.1 A student is ordinarily expected to complete the B.E. / B.Tech. Programme in 8 semesters (four academic years) but in any case not more than 14 Semesters for HSC (or equivalent) candidates and not more than 12 semesters for Lateral Entry Candidates.

5.1.1 A student is ordinarily expected to complete the B.E. Mechanical Engineering (Sandwich) Programme in 10 semesters (five academic years) but in any case not more than 18 Semesters for HSC (or equivalent) candidates.

5.2 Each semester shall normally consist of 75 working days or 540 periods of 50 minutes each.

The Head of the Institution shall ensure that every teacher imparts instruction as per the number of periods specified in the syllabus and that the teacher teaches the full content of the specified syllabus for the course being taught.

5.3 The Head of the Institution may conduct additional classes for improvement, special coaching, conduct of model test etc., over and above the specified periods. But for the purpose of calculation of attendance requirement for writing the end semester examinations (as per clause 6) by the students, following method shall be used.

$$\text{Percentage of Attendance} = \frac{\text{Total no. of periods attended in all the courses per semester}}{\text{(No. of periods / week as prescribed in the curriculum) x 15 taken together for all courses of the semester}} \times 100$$

The University Examination will ordinarily follow immediately after the last working day of the semester commencing from 1 semester as per the academic schedule prescribed from time to time.

- 5.4 The total period for completion of the programme reckoned from the commencement of the first semester to which the candidate was admitted shall not exceed the maximum period specified in clause 5.1 irrespective of the period of break of study (vide clause 18) in order that he/she may be eligible for the award of the degree (vide clause 16).

6. COURSE REGISTRATION

- 6.1 The Institution is responsible for registering the courses that each student is proposing to undergo in the ensuing semester. Each student has to register for all courses to be undergone in the curriculum of a particular semester (with the facility to drop courses to a maximum of 6 credits (vide clause 6.2)). The student can also register for courses for which the student has failed in the earlier semesters. The registration details of the candidates may be approved by the Head of the Institution and forwarded to the Controller of Examinations.

This registration is for undergoing the course as well as for writing the End Semester Examinations. No Elective course shall be offered by any department of any institution unless a minimum 10 students register for the course. However, if the students admitted in the associated Branch and Semester is less than 10, this minimum will not be applicable.

The courses that a student registers in a particular semester may include

- i. Courses of the current semester.
- ii. The core (Theory/Lab /EEC) courses that the student has not cleared in the previous semesters.
- iii. Elective courses which the student failed (either the same elective or a different elective instead)

6.2 Flexibility to Drop courses

- 6.2.1 A student has to earn the total number of credits specified in the curriculum of the respective Programme of study in order to be eligible to obtain the degree.
- 6.2.2 From the III to final semesters, the student has the option of dropping existing courses in a semester during registration. Total number of credits of such courses cannot exceed 6.
- 6.2.3 The student shall register for the project work in the final semester only.

7. ATTENDANCE REQUIREMENTS FOR COMPLETION OF THE SEMESTER

- 7.1 A Candidate who has fulfilled the following conditions shall be deemed to have satisfied the requirements for completion of a semester.

Ideally every student is expected to attend all classes of all the courses and secure 100% attendance. However, in order to give provision for certain unavoidable reasons such as Medical / participation in sports, the student is expected to attend atleast 75% of the classes.

Therefore, he/she shall secure not less than 75% (after rounding off to the nearest integer) of overall attendance as calculated as per clause 5.3.

7.2 However, a candidate who secures overall attendance between 65% and 74% in the current semester due to medical reasons (prolonged hospitalization / accident / specific illness) / Participation in Sports events may be permitted to appear for the current semester examinations subject to the condition that the candidate shall submit the medical certificate / sports participation certificate attested by the Head of the Institution. The same shall be forwarded to the Controller of Examinations for record purposes.

7.3 Candidates who secure less than 65% overall attendance and candidates who do not satisfy the clause 7.1 and 7.2 shall not be permitted to write the University examination at the end of the semester and not permitted to move to the next semester. They are required to repeat the incomplete semester in the next academic year, as per the norms prescribed.

8. CLASS ADVISOR

There shall be a class advisor for each class. The class advisor will be one among the (course-instructors) of the class. He / She will be appointed by the HoD of the department concerned. The class advisor is the ex-officio member and the Convener of the class committee. The responsibilities for the class advisor shall be:

- To act as the channel of communication between the HoD and the students of the respective class.
- To collect and maintain various statistical details of students.
- To help the chairperson of the class committee in planning and conduct of the class committee meetings.
- To monitor the academic performance of the students including attendance and to inform the class committee.
- To attend to the students' welfare activities like awards, medals, scholarships and industrial visits.

9. CLASS COMMITTEE

9.1. Every class shall have a class committee consisting of teachers of the class concerned, student representatives and a chairperson who is not teaching the class. It is like the 'Quality Circle' (more commonly used in industries) with the overall goal of improving the teaching- learning process. The functions of the class committee include

- Solving problems experienced by students in the class room and in the laboratories.
- Clarifying the regulations of the degree programme and the details of rules therein particularly (clause 5 and 7) which should be displayed on college Notice-Board.
- Informing the student representatives, the academic schedule including the dates of assessments and the syllabus coverage for each assessment.

- Informing the student representatives the details of Regulations regarding weightage used for each assessment. In the case of practical courses (laboratory / drawing / project work / seminar etc.) the breakup of marks for each experiment / exercise / module of work, should be clearly discussed in the class committee meeting and informed to the students.
- Analyzing the performance of the students of the class after each test and finding the ways and means of solving problems, if any.
- Identifying the weak students, if any, and requesting the teachers concerned to provide some additional help or guidance or coaching to such weak students.

9.2 The class committee for a class under a particular branch is normally constituted by the Head of the Department. However, if the students of different branches are mixed in a class (like the first semester which is generally common to all branches), the class committee is to be constituted by the Head of the Institution.

9.3 The class committee shall be constituted within the first week of each semester.

9.4 At least 4 student representatives (usually 2 boys and 2 girls) shall be included in the class committee.

9.5 The Chairperson of the class committee may invite the Class adviser(s) and the Head of the Department to the class committee meeting.

9.6 The Head of the Institution may participate in any class committee of the institution.

9.7 The chairperson is required to prepare the minutes of every meeting, submit the same to Head of the Institution within two days of the meeting and arrange to circulate it among the students and teachers concerned. If there are some points in the minutes requiring action by the management, the same shall be brought to the notice of the Management by the Head of the Institution.

9.8 The first meeting of the class committee shall be held within one week from the date of commencement of the semester, in order to inform the students about the nature and weightage of assessments within the framework of the Regulations. Two or three subsequent meetings may be held in a semester at suitable intervals. **The Class Committee Chairman shall put on the Notice Board the cumulative attendance particulars of each student at the end of every such meeting to enable the students to know their attendance details to satisfy the clause 6 of this Regulation.** During these meetings the student members representing the entire class, shall meaningfully interact and express the opinions and suggestions of the other students of the class in order to improve the effectiveness of the teaching-learning process.

10. COURSE COMMITTEE FOR COMMON COURSES

Each common theory course offered to more than one discipline or group, shall have a “Course Committee” comprising all the teachers teaching the common course with one of them nominated as Course Coordinator. The nomination of the Course Coordinator shall be made by the Head of the Department / Head of the Institution

depending upon whether all the teachers teaching the common course belong to a single department or to several departments. The 'Course committee' shall meet in order to arrive at a common scheme of evaluation for the test and shall ensure a uniform evaluation of the tests. Wherever feasible, the course committee may also prepare a common question paper for the internal assessment test(s).

11. SYSTEM OF EXAMINATION

- 11.1 Performance in each course of study shall be evaluated based on (i) continuous internal assessment throughout the semester and (ii) University examination at the end of the semester.
- 11.2 Each course, both theory and practical (including project work & viva voce Examinations) shall be evaluated for a maximum of 100 marks.
For all theory and practical courses including project work, the continuous internal assessment will carry 20 marks while the End - Semester University examination will carry 80 marks.
- 11.3 Industrial training and seminar shall carry 100 marks and shall be evaluated through internal assessment only.
- 11.4 The University examination (theory and practical) of 3 hours duration shall ordinarily be conducted between October and December during the odd semesters and between April and June during the even semesters.
- 11.5 The University examination for project work shall consist of evaluation of the final report submitted by the student or students of the project group (of not exceeding 4 students) by an external examiner and an internal examiner, followed by a viva-voce examination conducted separately for each student by a committee consisting of the external examiner, the supervisor of the project group and an internal examiner.
- 11.6 For the University examination in both theory and practical courses including project work the internal and external examiners shall be appointed by the Controller of Examinations.

12. PROCEDURE FOR AWARDING MARKS FOR INTERNAL ASSESSMENT

For all theory and practical courses (including project work) the continuous assessment shall be for a maximum of 20 marks. The above continuous assessment shall be awarded as per the procedure given below:

12.1 Theory Courses

Three tests each carrying 100 marks shall be conducted during the semester by the Department / College concerned. The total marks obtained in all tests put together out of 300, shall be proportionately reduced for 20 marks and rounded to the nearest integer (This also implies equal weightage to all the three tests).

12.2 Laboratory Courses

The maximum marks for Internal Assessment shall be 20 in case of practical courses. Every practical exercise / experiment shall be evaluated based on conduct of experiment / exercise and records maintained. There shall be at least one test. The criteria for arriving at the Internal Assessment marks of 20 is as follows: 75 marks shall be awarded for successful completion of all the prescribed experiments done in the Laboratory and 25 marks for the test. The total mark shall be reduced to 20 and rounded to the nearest integer.

12.3 Theory Courses with Laboratory Component

If there is a theory course with Laboratory component, there shall be three tests: the first two tests (each 100 marks) will be from theory portions and the third test (maximum mark 100) will be for laboratory component. The sum of marks of first two tests shall be reduced to 60 marks and the third test mark shall be reduced to 40 marks. The sum of these 100 marks may then be arrived at for 20 and rounded to the nearest integer.

12.4 Project Work

Project work may be allotted to a single student or to a group of students not exceeding 4 per group.

The Head of the Institutions shall constitute a review committee for project work for each branch of study. There shall be three reviews during the semester by the review committee. The student shall make presentation on the progress made by him / her before the committee. The total marks obtained in the three reviews shall be reduced for 20 marks and rounded to the nearest integer (as per the scheme given in 12.4.1).

- 12.4.1 The project report shall carry a maximum 30 marks. The project report shall be submitted as per the approved guidelines as given by Director, Academic Courses. Same mark shall be awarded to every student within the project group for the project report. The viva-voce examination shall carry 50 marks. Marks are awarded to each student of the project group based on the individual performance in the viva-voce examination.

Review I	Review II	Review III	End semester Examinations				
			Thesis Submission (30)		Viva-Voce (50)		
5	7.5	7.5	Internal	External	Internal	External	Supervisor
			15	15	15	20	15

- 12.4.2 If a candidate fails to submit the project report on or before the specified deadline, he/she is deemed to have failed in the Project Work and shall re-register for the same in a subsequent semester.

12.5 Other Employability Enhancement Courses

- (a) The seminar / Case study is to be considered as purely INTERNAL (with 100% internal marks only). Every student is expected to present a minimum of 2 seminars per semester before the evaluation committee and for each seminar,

marks can be equally apportioned. The three member committee appointed by Head of the Institution will evaluate the seminar and at the end of the semester the marks can be consolidated and taken as the final mark. The evaluation shall be based on the seminar paper (40%), presentation (40%) and response to the questions asked during presentation (20%).

- (b) The Industrial / Practical Training, Summer Project, Internship, shall carry 100 marks and shall be evaluated through internal assessment only. At the end of Industrial / Practical training / internship / Summer Project, the candidate shall submit a certificate from the organization where he / she has undergone training and a brief report. The evaluation will be made based on this report and a Viva-Voce Examination, conducted internally by a three member Departmental Committee constituted by the Head of the Institution. The certificates (issued by the organization) submitted by the students shall be attached to the mark list sent by the Head of the Institution to the Controller of Examinations.

12.6 Assessment for Value Added Course

The one / two credit course shall carry 100 marks and shall be evaluated through **continuous assessments only**. Two Assessments shall be conducted during the semester by the Department concerned. The total marks obtained in the tests shall be reduced to 100 marks and rounded to the nearest integer. A committee consisting of the Head of the Department, staff handling the course and a senior Faculty member nominated by the Head of the Institution shall monitor the evaluation process. The list of students along with the marks and the grades earned may be forwarded to the Controller of Examinations for appropriate action at least one month before the commencement of End Semester Examinations.

12.7 Assessment for Online Courses

Students may be permitted to credit one online course (which are provided with certificate) subject to a maximum of three credits. The approved list of online courses will be provided by the Centre for Academic courses from time to time. **This online course of 3 credits can be considered instead of one elective course.** The student needs to obtain certification or credit to become eligible for writing the End Semester Examination to be conducted by Anna University. **The course shall be evaluated through the End Semester Examination only conducted by Controller of Examinations, Anna University.**

- 12.8. Internal marks approved by the Head of the Institution shall be displayed by the respective HODs within 5 days from the last working day.**

12.9 Attendance Record

Every teacher is required to maintain an 'ATTENDANCE AND ASSESSMENT RECORD' which consists of attendance marked in each lecture or practical or project work class, the test marks and the record of class work (topic covered), separately for each course. This should be submitted to the Head of the department periodically (at

least three times in a semester) for checking the syllabus coverage and the records of test marks and attendance. The Head of the department will put his signature and date after due verification. At the end of the semester, the record should be verified by the Head of the Institution who will keep this document in safe custody (for five years). The University or any inspection team appointed by the University may verify the records of attendance and assessment of both current and previous semesters.

13. REQUIREMENTS FOR APPEARING FOR UNIVERSITY EXAMINATIONS

A candidate shall normally be permitted to appear for the University Examinations for all the courses registered in the current semester (vide clause 6) if he/she has satisfied the semester completion requirements (subject to Clause 7).

A candidate who has already appeared for any subject in a semester and passed the examination is not entitled to reappear in the same subject for improvement of grades.

14. PASSING REQUIREMENTS

14.1 A candidate who secures not less than 50% of total marks prescribed for the course [Internal Assessment + End semester University Examinations] with a minimum of 45% of the marks prescribed for the end-semester University Examination, shall be declared to have passed the course and acquired the relevant number of credits. This is applicable for both theory and practical courses (including project work).

14.2 If a student fails to secure a pass in theory courses in the current semester examination, he/she is allowed to write arrear examinations for the next three consecutive semesters and their internal marks shall be carried over for the above mentioned period of three consecutive semesters. If a student fails to secure a pass in a course even after three consecutive arrear attempts, the student has to redo the course in the semester in which it is offered along with regular students.

That is, the students should have successfully completed the courses of (n minus 4)th semester to register for courses in nth semester. Based on the above, the following prerequisites shall be followed for completing the degree programme:

- i. To enter into Semester V, the student should have no arrear in Semester I. Failing which the student shall redo the Semester I course/courses along with the regular students.
- ii. To enter into Semester VI, the student should have no arrear in Semester II. Failing which the student shall redo the Semester II course/courses along with the regular students.
- iii. To enter into Semester VII, the student should have no arrear in Semester III. Failing which the student shall redo the Semester III course/courses along with the regular students.

- iv. To enter into Semester VIII, the student should have no arrear in Semester IV. Failing which the student shall redo the Semester IV course/courses along with the regular students.

In case, if he/she has not successfully completed all the courses of semester V at the end of semester VIII, he/she shall redo the Semester V courses along with regular students. For the subsequent semesters of VI, VII and VIII, the same procedure shall be followed, subject to the maximum permissible period for this programme.

Note: The students who are admitted in 2017-2018 and 2018 – 2019 are permitted to appear for arrears upto VI semesters and will be allowed to move to VII semester only on completion of all the courses in the I semester.

In addition the following prerequisites shall be followed for completing the degree programme.

- i. To enter into Semester VII, the student should have no arrear in Semester I. Failing which the student shall redo the Semester I course/courses along with the regular students.
- ii. To enter into Semester VIII, the student should have no arrear in Semester II. Failing which the student shall redo the Semester II course/courses along with the regular students.

In case, if he/she has not successfully completed all the courses of semester III at the end of semester VIII, he/she shall redo the Semester III courses along with regular students. For the subsequent semesters of IV, V, VI, VII and VIII, the same procedure shall be followed, subject to the maximum permissible period for this programme.

- 14.3 If a student fails to secure a pass in a laboratory course, the student shall register for the course again, when offered next.
- 14.4 If a student fails to secure a pass in project work, the student shall register for the course again, when offered next.
- 14.5 The passing requirement for the courses which are assessed only through purely internal assessments (EEC courses except project work), is 50% of the internal assessment (continuous assessment) marks only.
- 14.6 A student can apply for revaluation of the student's semester examination answer paper in a theory course, within 2 weeks from the declaration of results, on payment of a prescribed fee along with prescribed application to the COE through the Head of the Institution. The COE will arrange for the revaluation and the results will be intimated to the student concerned through the Head of the Institution. Revaluation is not permitted for laboratory course and project work.

15. AWARD OF LETTER GRADES

- 15.1 All assessments of a course will be evaluated on absolute marks basis. However, for the purpose of reporting the performance of a candidate, letter grades, each carrying certain number of points, will be awarded as per the range of total marks (out of 100) obtained by the candidate in each subject as detailed below:

Letter Grade	Grade Points	Marks Range
O (Outstanding)	10	91 - 100
A + (Excellent)	9	81 - 90
A (Very Good)	8	71 – 80
B + (Good)	7	61 – 70
B (Average)	6	50 - 60
RA	0	<50
SA (Shortage of Attendance)	0	
W	0	

A student is deemed to have passed and acquired the corresponding credits in a particular course if he/she obtains any one of the following grades: “O”, “A+”, “A”, “B+”, “B”.

'SA' denotes shortage of attendance (as per clause 7.3) and hence prevention from writing the end semester examinations. 'SA' will appear only in the result sheet.

“RA” denotes that the student has failed to pass in that course. “W” denotes withdrawal from the exam for the particular course. The grades RA and W will figure both in Marks Sheet as well as in Result Sheet). In both cases the student has to earn Continuous Assessment marks and appear for the End Semester Examinations. If the grade W is given to course, the attendance requirement need not be satisfied.

If the grade RA is given to a core theory course, the attendance requirement need not be satisfied, but if the grade RA is given to a Laboratory Course/ Project work / Seminar and any other EEC course, the attendance requirements (vide clause 7) should be satisfied.

- 15.2 For the Co-curricular activities such as National Cadet Corps (NCC)/ National Service Scheme (NSS) / NSO / YRC, a satisfactory / not satisfactory grading will appear in the mark sheet. Every student shall put in a minimum of 75% attendance in the training and attend the camp compulsorily. The training and camp shall be completed during the first year of the programme. However, for valid reasons, the Head of the Institution may permit a student to complete this requirement in the second year. **A satisfactory grade in the above co-curricular activities is compulsory for the award of degree.**

15.3 The grades O, A+, A, B+, B obtained for the one credit course shall figure in the Mark sheet under the title '**Value Added Courses**'. The Courses for which the grades are RA, SA **will not figure in the mark sheet**.

Grade sheet

After results are declared, Grade Sheets will be issued to each student which will contain the following details:

- The college in which the candidate has studied
- The list of courses enrolled during the semester and the grade scored.
- The Grade Point Average (GPA) for the semester and
- The Cumulative Grade Point Average (CGPA) of all courses enrolled from first semester onwards.
- GPA for a semester is the ratio of the sum of the products of the number of credits for courses acquired and the corresponding points to the sum of the number of credits for the courses acquired in the semester.
- CGPA will be calculated in a similar manner, considering all the courses registered from first semester. RA grades will be excluded for calculating GPA and CGPA.

$$\text{GPA / CGPA} = \frac{\sum_{i=1}^n C_i GP_i}{\sum_{i=1}^n C_i}$$

where C_i is the number of Credits assigned to the course

GP_i is the point corresponding to the grade obtained for each course

n is number of all courses successfully cleared during the particular semester in the case of GPA and during all the semesters in the case of CGPA

16 ELIGIBILITY FOR THE AWARD OF THE DEGREE

16.1 A student shall be declared to be eligible for the award of the B.E. / B.Tech. Degree provided the student has

- i. Successfully gained the required number of total credits as specified in the curriculum corresponding to the student's programme within the stipulated time.
- ii. Successfully completed the course requirements, appeared for the End-Semester examinations and passed all the subjects prescribed in all the 8 semesters / (10 Semesters for B.E. Mechanical Engineering (Sandwich)) within a maximum period of 7 years (9 years in case of B.E. Mechanical Engineering

- (Sandwich) and 6 years in the case of Lateral Entry) reckoned from the commencement of the first (third in the case of Lateral Entry) semester to which the candidate was admitted.
- iii. Successfully passed any additional courses prescribed by the Director, Academic Courses whenever readmitted under regulations R-2017 (vide clause 18.3)
 - iv. Successfully completed the NCC /NSS /NSO /YRC requirements.
 - v. No disciplinary action pending against the student.
 - vi. The award of Degree must have been approved by the Syndicate of the University.

16.2 CLASSIFICATION OF THE DEGREE AWARDED

16.2.1 First Class With Distinction

A student who satisfies the following conditions shall be declared to have passed the examination in First class with Distinction:

- Should have passed the examination in all the courses of all the eight semesters (10 Semesters in case of Mechanical (Sandwich) and 6 semesters in the case of Lateral Entry) in the student's First Appearance within five years (Six years in the case of Mechanical (Sandwich) and Four years in the case of Lateral Entry). Withdrawal from examination (vide Clause 17) will not be considered as an appearance
- Should have secured a CGPA of not less than 8.50
- One year authorized break of study (if availed of) is included in the five years (Six years in the case of Mechanical (Sandwich) and four years in the case of lateral entry) for award of First class with Distinction.
- Should NOT have been prevented from writing end semester examination due to lack of attendance in any semester.

16.2.2 First Class:

A student who satisfies the following conditions shall be declared to have passed the examination in First class:

- Should have passed the examination in all the courses of all eight semesters (10 Semesters in case of Mechanical (Sandwich) and 6 semesters in the case of Lateral Entry) within Six years. (Seven years in case of Mechanical (Sandwich) and Five years in the case of Lateral Entry)
- One year authorized break of study (if availed of) or prevention from writing the End Semester examination due to lack of attendance (if applicable) is included in the duration of six years (Seven years in case of

Mechanical (Sandwich) and five years in the case of lateral entry) for award of First class

- Should have secured a CGPA of not less than 7.00

16.2.3 Second Class:

All other students (not covered in clauses 16.2.1 and 16.2.2) who qualify for the award of the degree (vide Clause 16.1) shall be declared to have passed the examination in Second Class.

- 16.3** A candidate who is absent in end semester examination in a course / project work after having registered for the same shall be considered to have appeared in that examination for the purpose of classification. (subject to clause 17 and 18)

16.4 Photocopy / Revaluation

A candidate can apply for photocopy of his/her semester examination answer paper in a theory course, within 2 weeks from the declaration of results, on payment of a prescribed fee through proper application to the Controller of Examinations through the Head of Institutions. The answer script is to be valued and justified by a faculty member, who handled the subject and recommend for revaluation with breakup of marks for each question. Based on the recommendation, the candidate can register for the revaluation through proper application to the Controller of Examinations. The Controller of Examinations will arrange for the revaluation and the results will be intimated to the candidate concerned through the Head of the Institutions. Revaluation is not permitted for practical courses and for project work.

A candidate can apply for revaluation of answer scripts for not exceeding 5 subjects at a time

16.5 Review

Candidates not satisfied with Revaluation can apply for Review of his/ her examination answer paper in a theory course, within the prescribed date on payment of a prescribed fee through proper application to Controller of Examination through the Head of the Institution.

Candidates applying for Revaluation only are eligible to apply for Review.

17. PROVISION FOR WITHDRAWAL FROM END-SEMESTER EXAMINATION

- 17.1** A student may, for valid reasons, (medically unfit / unexpected family situations / sports approved by Chairman, sports board and HOD) be granted permission to withdraw from appearing for the end semester examination in any course or courses in ANY ONE of the semester examinations during the entire duration of the degree programme. The application shall be sent to Director, Student Affairs through the Head of the Institutions with required documents.

- 17.2 Withdrawal application is valid if the student is otherwise eligible to write the examination (Clause 7) and if it is made within TEN days prior to the commencement of the examination in that course or courses and recommended by the Head of the Institution and approved by the Controller of Examinations.
- 17.2.1 Notwithstanding the requirement of mandatory 10 days notice, applications for withdrawal for special cases under extraordinary conditions will be considered on the merit of the case.
- 17.3 In case of withdrawal from a course / courses (Clause 13) the course will figure both in Marks Sheet as well as in Result Sheet. Withdrawal essentially requires the student to register for the course/courses The student has to register for the course, fulfill the attendance requirements (vide clause 7), earn continuous assessment marks and attend the end semester examination. However, withdrawal shall not be construed as an appearance for the eligibility of a candidate for First Class with Distinction.
- 17.4 Withdrawal is permitted for the end semester examinations in the final semester only if the period of study the student concerned does not exceed 5 years as per clause 16.2.1.

18. PROVISION FOR AUTHORISED BREAK OF STUDY

- 18.1 A student is permitted to go on break of study for a maximum period of one year as a single spell.
- 18.2 Break of Study shall be granted only once for valid reasons for a maximum of one year during the entire period of study of the degree programme. However, in extraordinary situation the candidate may apply for additional break of study not exceeding another one year by paying prescribed fee for break of study. If a candidate intends to temporarily discontinue the programme in the middle of the semester for valid reasons, and to rejoin the programme in a subsequent year, permission may be granted based on the merits of the case provided he / she applies to the Director, Student Affairs in advance, but not later than the last date for registering for the end semester examination of the semester in question, through the Head of the Institution stating the reasons therefore and the probable date of rejoining the programme.
- 18.3 The candidates permitted to rejoin the programme after break of study / prevention due to lack of attendance, shall be governed by the Curriculum and Regulations in force at the time of rejoining. The students rejoining in new Regulations shall apply to the Director, Academic Courses in the prescribed format through Head of the Institution at the beginning of the readmitted semester itself for prescribing additional courses, if any, from any semester of the regulations in-force, so as to bridge the curriculum in-force and the old curriculum.
- 18.4 The authorized break of study would not be counted towards the duration specified for passing all the courses for the purpose of classification (vide Clause 16.2).

- 18.5 The total period for completion of the Programme reckoned from, the commencement of the first semester to which the candidate was admitted shall not exceed the maximum period specified in clause 5.1 irrespective of the period of break of study in order that he/she may be eligible for the award of the degree.
- 18.6 If any student is prevented for want of required attendance, the period of prevention shall not be considered as authorized 'Break of Study' (Clause 18.1)

19. DISCIPLINE

- 19.1 Every student is required to observe disciplined and decorous behavior both inside and outside the college and not to indulge in any activity which will tend to bring down the prestige of the University / College. The Head of Institution shall constitute a disciplinary committee consisting of Head of Institution, Two Heads of Department of which one should be from the faculty of the student, to enquire into acts of indiscipline and notify the University about the disciplinary action recommended for approval. In case of any serious disciplinary action which leads to suspension or dismissal, then a committee shall be constituted including one representative from Anna University, Chennai. In this regard, the member will be nominated by the University on getting information from the Head of the Institution.
- 19.2 If a student indulges in malpractice in any of the University / internal examination he / she shall be liable for punitive action as prescribed by the University from time to time.

20. REVISION OF REGULATIONS, CURRICULUM AND SYLLABI

The University may from time to time revise, amend or change the Regulations, Curriculum, Syllabus and scheme of examinations through the Academic Council with the approval of Syndicate.



All the Best...



It's all about character

*Watch your thoughts,
they become words.*

*Watch your words,
they become actions.*

*Watch your actions,
they become habits.*

*Watch your habits,
they become character.*

Watch your character,

It becomes your destiny!

Yesterday is history

Tomorrow is a mystery

Today is a gift

That's why we call it the present

You only live once

But if you work it right, once is enough

Our Recruiters



and many more...

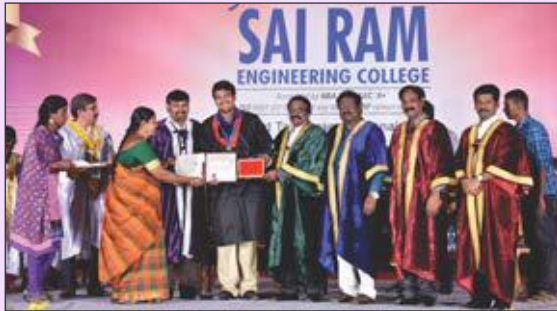
Academic Year 2018-19 *at a Happy glance!*

College Day & Culturals 2019



20th GRADUATION DAY

The 20th Graduation Ceremony was organized on 1st June, 2019. **Padma Bhushan Dr. A. Sivathanu Pillai**, DRDO Dr. D.S. Kothari Chair, Research & Innovation Centre, Ministry of Defence, Government of India delivered the Graduation Day Address and awarded the degrees and Gold plaques worth **25 lakhs** to **146 Rank Holders including 4 Gold Medalists** of the Institution. **Dr. S. Selladurai**, Additional Registrar, Anna University has invited as a Special Guest in this great occasion.



Engineering

Sri Sai Ram Engineering College

West Tambaram, Chennai-44. www.sairam.edu.in

Sri Sai Ram Institute of Technology

West Tambaram, Chennai-44. www.sairamit.edu.in

Sri Sai Ram Institute of Management Studies

West Tambaram, Chennai-44. www.sims.sairam.edu.in

Sri Sairam College of Engineering

Anekal, Bangalore, Karnataka. www.sairamce.edu.in

Medical College

Sri Sai Ram Siddha Medical College

www.sairamsiddha.edu.in

Sri Sai Ram Ayurveda Medical College

www.sairamayur.edu.in

Sri Sai Ram Homoeopathy Medical College

www.sairamhomoeo.edu.in

West Tambaram, Chennai-44.

Research Centre

Sai Ram Advanced Centre for Research

West Tambaram, Chennai - 44.

Polytechnic / ITI

www.sairampoly.edu.in

Sri Sai Ram Polytechnic College

West Tambaram, Chennai-44.

Sri Sai Ram I.T.I.

Vedasandur, Dindigul, T.N.

Sri Sai Ram Arts and Science College

Eliyarpathy, Madurai - 22.

School

www.sairamschool.edu.in

Sai Matriculation Higher Secondary School

Madipakkam, Chennai-91. www.saischool.edu.in

Sai Ram Matriculation Higher Secondary School

West Tambaram, Chennai - 44.

Sai Ram Matriculation Higher Secondary School

Goripalayam, Madurai - 2.

Sai Ram Matriculation Higher Secondary School

Thiruthuraiipoondi, Thiruvarur, T.N.

Sai Ram Matriculation Higher Secondary School

Thiruvarur, Thiruvarur Dist., T.N.

Sai Ram Vidyalaya (CBSE)

Madipakkam, Chennai-91.

Sai Ram Vidyalaya (CBSE)

Pudhucherry.

Sri Sairam Pre-University College

Anekal, Bangalore, Karnataka.



Administrative Office : "SAI BHAVAN",

31 B, Madley Road, T. Nagar,

Chennai - 17. Tel : 044 - 4226 7777

e-mail : sairam@sairamgroup.in



Sairam
INSTITUTIONS



Sri
SAI RAM
ENGINEERING COLLEGE

Accredited by **NBA** and **NAAC 'A+'**
ISO 9001:2015 Certified and MHRD NIRF ranked institution

Sai Leo Nagar, West Tambaram, Chennai - 44
www.sairam.edu.in

Administrative Office : 'Sai Bhavan', 31-B, Madley Road, T. Nagar,
Chennai - 600 017. Tel : +91 - 44 - 4226 7777 www.sairamgroup.in

We build a better nation through quality education.